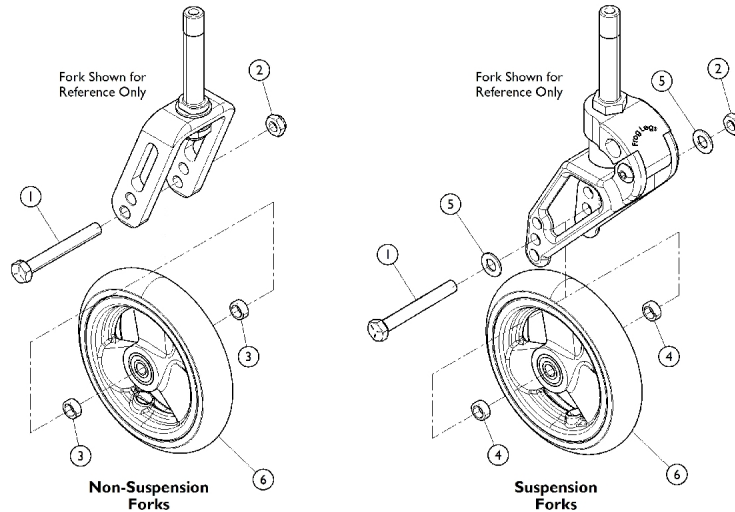


# Casters & Mounting Hardware (Before 7/1/11)

After 10/4/09, the 5SOFT (5") Semi-Pneumatic is no longer available and is replaced as a 5SOFT (5") Urethane. Order caster in pairs for wheelchairs manufactured before 10/5/09.



Item Number	Note	Part Number	Description	Quantity Per	
				Package	Assembly
1		1026908	Screw, Hex Head (5/16-24 x 2-1/2")	1	1
2		1025730	Locknut (5/16-24)	1	1
3		1026160	Spacer (5/16 x 7/16 x 3/8")	1	2
4		1028539	Spacer (15/32 x 5/16 x 3/16)	1	2
5		1025704	Washer, Flat (5/16 x 5/8 x 1/16")	1	2
6		See Chart	Casters & Mounting Hardware	1	1

## Caster and Mounting Hardware

Wheel Style	Wheel Size	Tire Type	Wheel	Spacer	Bearing	Tire	Tube/Insert
AT900	3"	Urethane	1032190-NLA	1026172	40117X026	N/A	N/A
4SOFT	4"	Semi-Pneu.	1114142	1026172	40117X026	N/A	N/A
5ALUM	5"	Urethane	1026952	1026172	40117X026	N/A	N/A
5SOFT	5"	Urethane	1128071 See Note(s) B, A	N/A	N/A	N/A	N/A
AT901	5"	Urethane	1029496	1026172	40117X026	N/A	N/A
AT902 See Note(s) C	6"	Urethane	1034352 See Note(s) C	N/A	N/A	N/A	N/A
6PNEU	6"	Pneumatic	1044040	1026172	40117X026	1026010-NLA	1026011-NLA

## **Casters & Mounting Hardware (Before 7/1/11)**

**After 10/4/09, the 5SOFT (5") Semi-Pneumatic is no longer available and is replaced as a 5SOFT (5") Urethane. Order caster in pairs for wheelchairs manufactured before 10/5/09.**

NOTE:	A - Wheel includes Tire and Bearings
	B - After 10/4/09, the 5SOFT (5") Semi-Pneumatic is no longer available and is replaced as a 5SOFT (5") Urethane. Order caster in pairs for wheelchairs manufactured before 10/5/09.
	C - Consists of (2) Casters.