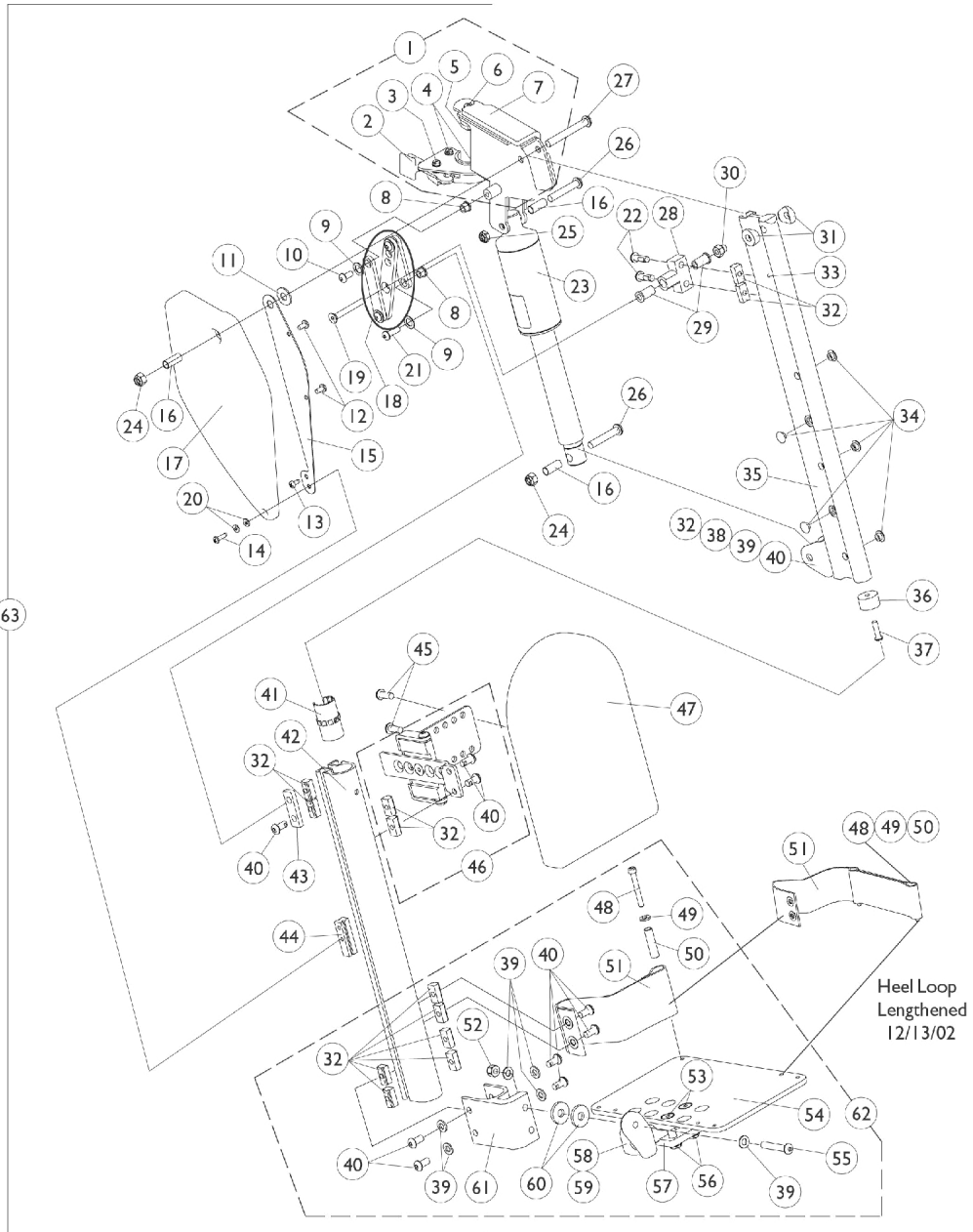


Power Articulating Legrest POWER18/POWER20 (Before 9/15/01)



Power Articulating Legrest POWELR18/POWELR20 (Before 9/15/01)

| Item Number | Note | Part Number | Description | Quantity Per | |
|-------------|------|---------------|---|--------------|----------|
| | | | | Package | Assembly |
| 1 | A,G | 1101112-NLA | NLA - Legrest Support Assembly, Sector, Black - Right | 1 | 1 |
| 1 | A,G | 1101113-NLA | NLA - Legrest Support Assembly, Sector, Black - Left | 1 | 1 |
| 2 | | 1025454 | Housing, Latch - Right | 1 | 1 |
| 2 | | 1025455 | Housing, Latch - Left | 1 | 1 |
| 3 | | 7930314 | Package, Screw, Slotted Hex Washer Head (#10-32 x 1/2") | 25 | 1 |
| 4 | | 1025451 | Screw, Slotted Hex Washer Head (#10-32 x 5/8") | 1 | 2 |
| 5 | | 1099685 | Plug, Pivot | 1 | 1 |
| 6 | | 1091870 | Screw, Socket Button Head w/ Patch (1/4-20 x 3/4") | 1 | 1 |
| 7 | G | 1099694-NLA | NLA - Pad, Cushion - Right | 1 | 1 |
| 7 | G | 1099695-NLA | NLA - Pad, Cushion - Left | 1 | 1 |
| 8 | | 1099671 | Bearing, Flange (1/4 x 5/16" Long) | 1 | 2 |
| 9 | | 1040755 | Spacer, Nylon (3/8 x 7/8 x 1/32") | 1 | 2 |
| 10 | | 1006773-NLA | NLA - Screw, Socket Button Head (1/4-20 x 1/2") | 1 | 1 |
| 11 | | 1012371 | Washer, Nylon (3/8 x 7/8 x 1/16") | 1 | 1 |
| 12 | | 1022597 | Screw, Phillips Pan Head Tap (#10-32 x 3/8") | 1 | 2 |
| 13 | | 1025729 | Screw, Phillips Pan Head Tap (#8-32 x 3/8") | 1 | 1 |
| 14 | | 1014386-NLA | NLA - Screw, Phillips Pan Head (#8-32 x 5/8") | 1 | 1 |
| 15 | G | 1099699-NLA | NLA - Bracket, Cover | 1 | 1 |
| 16 | G | 1099687-NLA | NLA - Sleeve (5/16 x 3/8 x 7/8") | 1 | 3 |
| 17 | G | 1099692-NLA | NLA - Cover, Legrest Support - Right | 1 | 1 |
| 17 | G | 1099693-NLA | NLA - Cover, Legrest Support - Left | 1 | 1 |
| 18 | | 1102934 | Linkage Assembly, Power Leg | 1 | 1 |
| 19 | | 60285X012-NLA | NLA - Screw, Socket Flat Head (1/4-20 x 2") | 1 | 1 |
| 20 | | 1043599-NLA | NLA - Washer, Flat (5/32 x 3/8 x 1/32") | 1 | 2 |
| 21 | | 1009838 | Screw, Socket Button (1/4-20 x 3/4") | 1 | 1 |
| 22 | | 1091870 | Screw, Socket Button Head w/ Patch (1/4-20 x 3/4") | 1 | 2 |
| 23 | | 1101398-NLA | NLA - Motor, Actuator | 1 | 1 |
| 24 | | 1026158 | Locknut (5/16-18) | 1 | 2 |
| 25 | | 1028769 | Locknut (5/16-18) | 1 | 1 |
| 26 | | 1101267-NLA | NLA - Screw, Socket Button Head (5/16-18 x 1-1/2") | 1 | 2 |
| 27 | | 1101214-NLA | NLA - Screw, Socket Button Head (5/16-18 x 2-1/2") | 1 | 1 |
| 28 | | 1099667-NLA | NLA - Block, Pivot | 1 | 1 |
| 29 | | 1099684 | Bearing, Flange (1/4 x 3/4" Long) | 1 | 2 |
| 30 | | 7930338-NLA | NLA - Nut, Acorn (1/4-20) | 25 | 1 |
| 31 | | 0175600 | Spacer, Coved (5/16 x 3/4 x 3/8") | 1 | 2 |
| 32 | | 1082699 | T-Nut (1/4-20) | 1 | 14 |
| 33 | | 1038785-NLA | NLA - Pin, Roll (1/8 x 3/8") | 1 | 1 |
| 34 | | 1101883 | Glide | 1 | 5 |
| 35 | B,G | 1104102-NLA | NLA - Extrusion, Internal Slide - Short (16-3/4" L) | 1 | 1 |
| 35 | B,H | 1104104-NLA | NLA - Extrusion, Internal Slide Long (18-3/4" L) | 1 | 1 |
| 36 | | 1099702 | Glide, Internal | 1 | 1 |
| 37 | | 1018846 | Screw, Socket Button Head (#10-24 x 3/4") | 1 | 1 |
| 38 | G | 1099698-NLA | NLA - Bracket, Actuator | 1 | 1 |

Power Articulating Legrest POWELR18/POWELR20 (Before 9/15/01)

| Item Number | Note | Part Number | Description | Quantity Per | |
|-------------|------|--------------|---|--------------|----------|
| | | | | Package | Assembly |
| 39 | | 1026907 | Washer (1/4 x 1/2 x 1/16") | 1 | 8 |
| 40 | | 1100023 | Screw, Button Head w/ Patch (1/4-20 x 1/2") | 1 | 11 |
| 41 | G | 1099686-NLA | NLA - Bearing, Linear | 1 | 1 |
| 42 | | 1099676-NLA | NLA - Extrusion, External - Short (14-1/2" L) | 1 | 1 |
| 42 | | 1099679-NLA | NLA - Extrusion, External - Long (16-1/2" L) | 1 | 1 |
| 43 | | 1099665-NLA | NLA - Plate, Side Pivot | 1 | 1 |
| 44 | G | 1099666-NLA | NLA - Block, Slide | 1 | 1 |
| 45 | | 7930335-NLA | NLA - Package, Screw, Phillips Pan Head (#10-32 x 1/2") | 25 | 1 |
| 46 | G | 1101116-NLA | NLA - Calf Pad Bracket Assembly, Black | 1 | 1 |
| 47 | | 88804529X003 | Pad, Legrest, Vinyl - Right | 1 | 1 |
| 47 | | 88804529X004 | Pad, Legrest, Vinyl - Left | 1 | 1 |
| 48 | | 1023965-NLA | NLA - Screw, Socket Head (#10-32 x 1-1/2") | 1 | 1 |
| 49 | | 1028516 | Washer, Steel (3/16 x 7/16 x 1/16") | 1 | 1 |
| 50 | | 1015629-NLA | NLA - Bushing | 1 | 1 |
| 51 | F | 1101268 | Heel Loop Assembly - Right | 1 | 1 |
| 51 | F | 1101269 | Heel Loop Assembly - Left | 1 | 1 |
| 52 | | 7930333 | Locknut (1/4-20) | 25 | 1 |
| 53 | | 1029545 | Screw, Socket Flat Head (1/4-20 x 3/4") | 1 | 2 |
| 54 | | 1060427-NLA | NLA - Footplate, Adjustable Angle, Large, Black (5-1/4" W x 8" L) | 1 | 1 |
| 55 | | 1008495 | Screw, Socket Button Head (1/4-20 x 1-1/2") | 1 | 1 |
| 56 | | 1082686 | Nut, Barrel, Hex Head (1/4-20 x 11/16") | 1 | 2 |
| 57 | | 1058517 | Clamp, Footplate | 1 | 1 |
| 58 | | 1052102 | Hinge, Footplate - Right | 1 | 1 |
| 58 | | 1052103 | Hinge, Footplate - Left | 1 | 1 |
| 59 | | 1048816 | Screw, Nylon Adjustment (1/2-13 x 7/8") | 1 | 1 |
| 60 | | 7930313 | Package, Washer, Nylon (5/16 x 7/8 x 1/8") | 25 | 1 |
| 61 | | 1099678 | Extrusion, Footplate Adapter | 1 | 1 |
| 62 | C | 1101114 | Footplate Assembly, Adjustable Angle, Black - Right (5-1/4" W) | 1 | 1 |
| 62 | C | 1101115 | Footplate Assembly, Adjustable Angle, Black - Left (5-1/4" W) | 1 | 1 |
| 63 | D,E | 1099704-NLA | NLA - Legrest, Power Articulating, Sector, Black, Short (13"-18" Range) - Right | 1 | 1 |
| 63 | D,E | 1099705-NLA | NLA - Legrest, Power Articulating, Sector, Black, Short (13"-18" Range) - Left | 1 | 1 |
| 63 | D,E | 1099706-NLA | NLA - Legrest Assembly, Power Articulating, Sector, Black, Long (15"-20" Range) - Right | 1 | 1 |
| 63 | D,E | 1099707-NLA | NLA - Legrest Assembly, Power Articulating, Sector, Black, Long (15"-20" Range) - Left | 1 | 1 |

Power Articulating Legrest

POWELR18/POWELR20 (Before 9/15/01)

NOTE: A - Includes Items 2-7
B - Includes Items 32,33,38-40
C - Includes Items 32,39,40,48-61
D - Includes Items 1, 8-32, 35-37, 41-47, 62
E - Power articulating legrest before 9/15/01 NLA. See power articulating legrest dated after 7/26/04. Legrest must be ordered in pairs to match.
F - Heel loop service part was lengthened 12/13/02. Verify with customer if longer heel loop is present. Order in pairs when needed along with 2 each of items 48, 49 and 50.
G - No longer available, see item 63 part numbers 1099704 and 1099705
H - No longer available, see item 63 part numbers 1099706 and 1099707