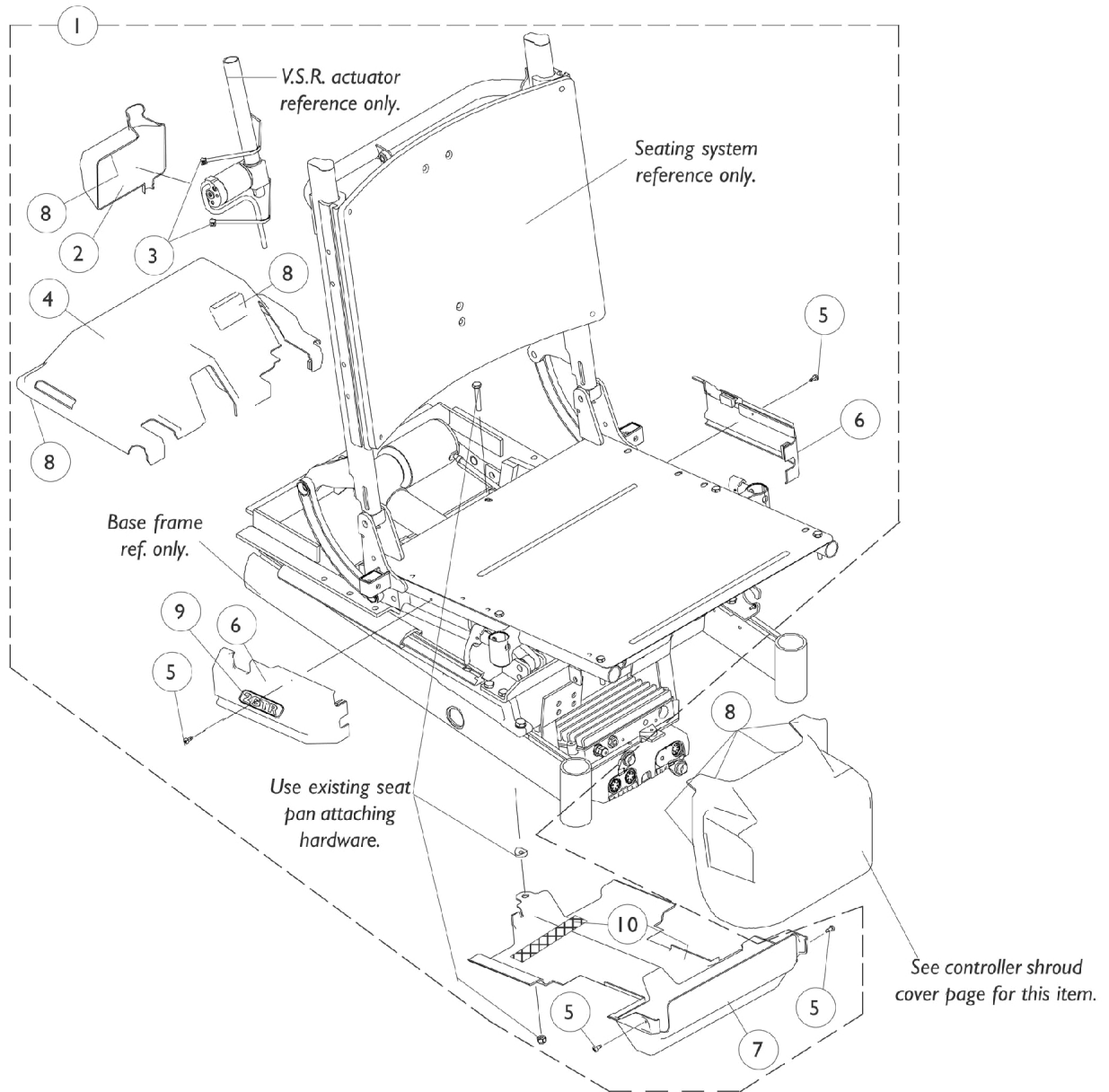


# Shroud Covers

## Rear, Side, Lower Seat & V.S.R. Actuator



## Shroud Covers

### Rear, Side, Lower Seat & V.S.R. Actuator

Item Number	Note	Part Number	Description	Quantity Per	
				Package	Assembly
1	A	1104883-NLA	NLA - Shroud Assembly w/ Hardware, Tilt Only 3G	1	1
1	B	1104884-NLA	NLA - Shroud Assembly w/ Hardware, Recline Only 3G	1	1
1	B	1104842-NLA	NLA - Shroud Assembly w/ Hardware, Tilt/ Recline 3G	1	1
2		1091872-NLA	NLA - Cover, Shroud w/ Dual Lock Fasteners, V.S.R. Actuator	1	1
3		2001682	Tie Wrap (8" L)	1	2
4		1091311-NLA	NLA - Cover, Shroud w/ Dual Lock Fasteners - Rear	1	1
5		1025729	Screw, Phillips Pan Head Tap (#8-32 x 3/8")	1	4
6	C	1091314-NLA	NLA - Side Shroud Cover Assembly w/ Decal, Black, Tilt - Right	1	1
6	C	1091315-NLA	NLA - Side Shroud Cover Assembly w/ Decal, Black, Tilt - Left	1	1
6	C,D	See Note	See Footnote	1	1
6	C,D	See Note	See Footnote	1	1
6	C,D	See Note	See Footnote	1	1
6	C,D	See Note	See Footnote	1	1
7		1094275-NLA	NLA - Cover, Shroud w/ Loop Fastener, Lower Seat	1	1
8		1092662-NLA	NLA - Package, Fastener, Dual Lock 250 (1/2" W x 7/8" L)	10	1
9		1087033-NLA	NLA - Decal, Side Shroud Cover, Tilt Only	1	2
9		1087034-NLA	NLA - Decal, Side Shroud Cover, Recline Only	1	2
9		1087032-NLA	NLA - Decal, Side Shroud Cover, Tilt/ Recline	1	2
10		1079246-NLA	NLA - Fastener, Loop Adhesive Back (1" W x 3" L)	1	2

NOTE: A - Includes Items 4-7  
B - Includes Items 2-7  
C - Back Only  
D - No longer available as a service part.