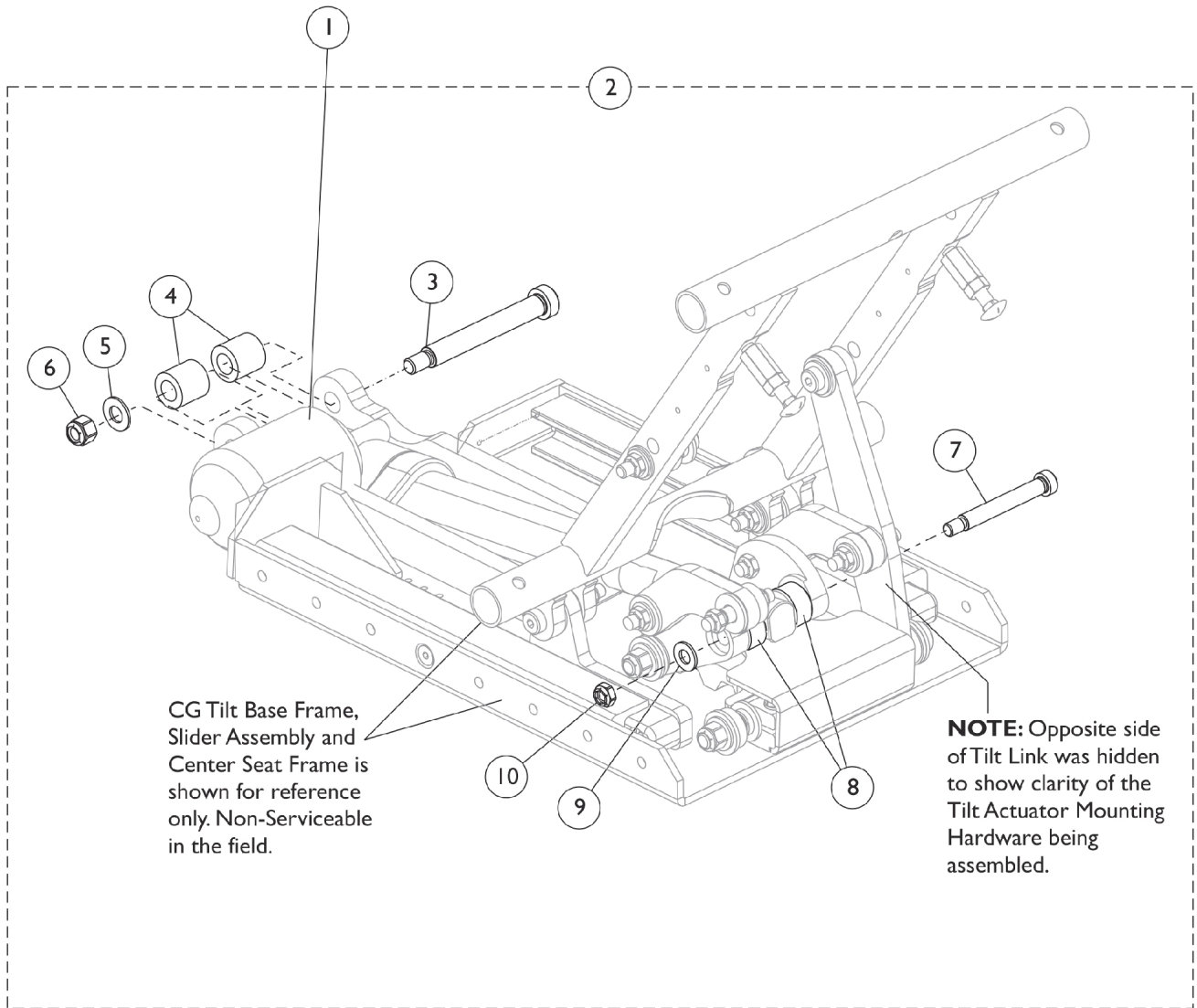


# Tilt Actuator Motor (Conventional) and Mounting Hardware



# Tilt Actuator Motor (Conventional) and Mounting Hardware

Item Number	Note	Part Number	Description	Quantity Per	
				Package	Assembly
1	A	1169823	Kit, Tilt Actuator Motor Assembly and Mounting Hardware	1	1
2	B	1169672	Kit, Tilt Actuator Motor Mounting Hardware	1	1
3			NLA - Screw, Shoulder Hex Socket Head (1/2 x 3-1/2", 3/8-16)	1	1
4			Spacer (1/2 x 7/8 x 7/8")	1	2
5			Washer, Nylon (3/8 x 13/16 x 1/16")	1	1
6			Locknut (3/8-16)	1	1
7			NLA - Bolt, Shoulder (3/8 x 2-1/2")	1	1
8			Bushing, Actuator Pivot	1	2
9			Washer, Steel (11/32 x 11/16 x 1/16")	1	1
10			Locknut (5/16-18)	1	1
<p>NOTE: A - Kit includes the Tilt Actuator Motor Assembly, items 3-10 and Installation Instruction Sheets. Additional quantities of items 5, 9 and 10 are included with kit not shown.            B - Includes items 3-10.</p>					