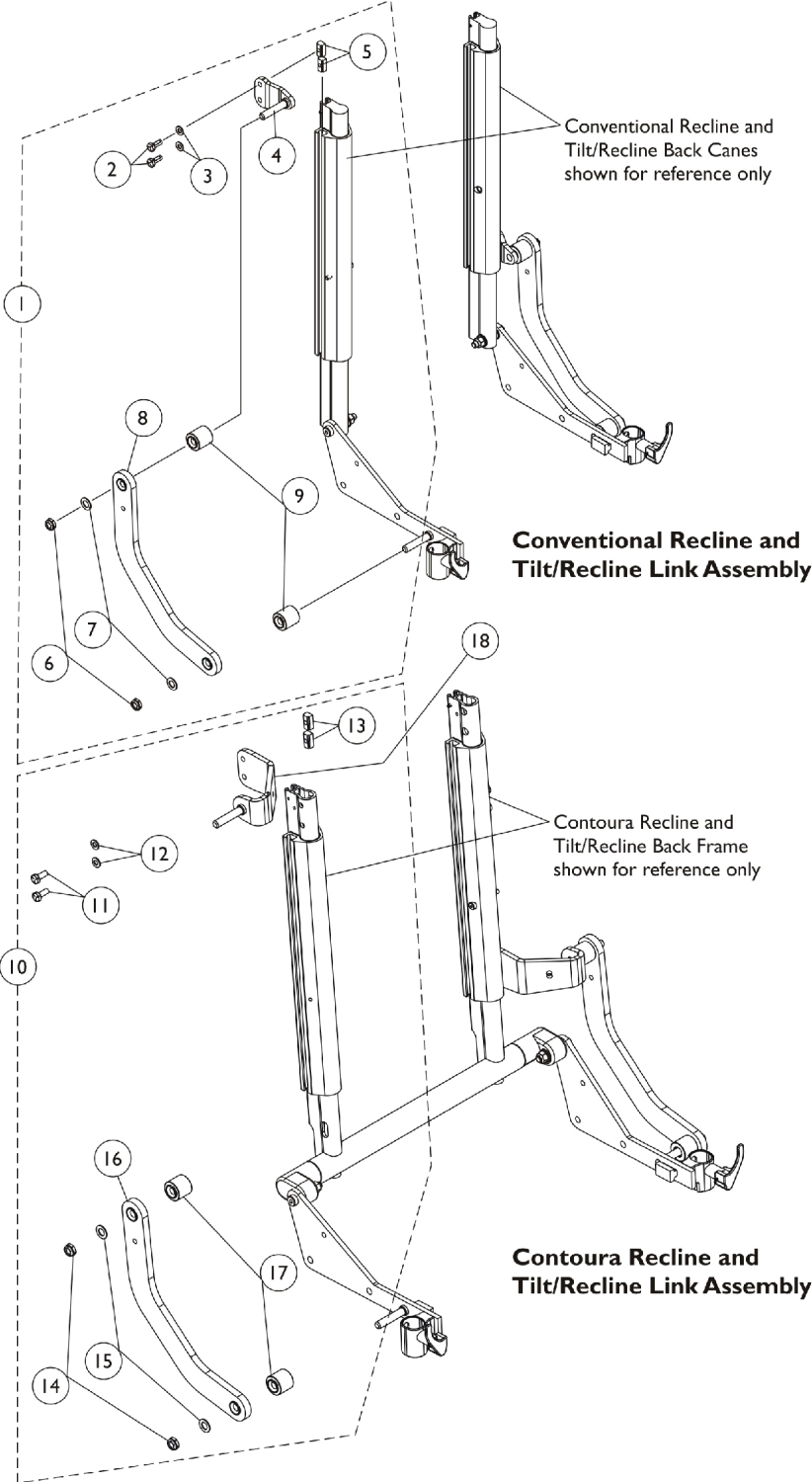


# Back Recline Shear Link Assemblies



## Back Recline Shear Link Assemblies

Item Number	Note	Part Number	Description	Quantity Per	
				Package	Assembly
1	A	1125758	Kit, Recline Shear Link Assembly Conventional (Pair)	1	1
2			Screw, Hex Head w/ Patch (1/4-20 x 5/8")	1	4
3			Washer (1/4 x 1/2 x 1/16")	1	4
4			Plate, Shear Adapter	1	2
5			T-Nut (1/4-20)	1	4
6			Locknut, Low Profile (3/8-16)	1	4
7			Washer, Flat (3/8 x 11/16 x 1/16")	1	4
8			Link, Recline Shear, Black - Right	1	1
8			Link, Recline Shear, Black - Left	1	1
9			Stand-Off, Recline Shear Link	1	4
10	B	1168997	Kit, Recline Shear Link Assembly, Contoura/Curve Contoura (Pair)	1	1
11			Screw, Hex Head w/ Patch (1/4-20 x 5/8")	1	4
12			Washer (1/4 x 1/2 x 1/16")	1	4
13			T-Nut (1/4-20)	1	4
14			Locknut, Low Profile (3/8-16)	1	4
15			Washer, Flat (3/8 x 11/16 x 1/16")	1	4
16			Link, Recline Shear, Black - Right	1	1
16			Link, Recline Shear, Black - Left	1	1
17			Stand-Off, Recline Shear Link	1	4
18	C	1131413-NLA	NLA - Adapter, Recline Shear Contoura (16" W)	1	2
18	C	1122580-NLA	NLA - Adapter, Recline Shear Contoura (18" W)	1	2
18	C	1122623	Adapter, Recline Shear Contoura (20" W)	1	2
18	C	1131414-NLA	NLA - Adapter, Recline Shear Contoura (22" W)	1	2
18	C	1131415-NLA	NLA - Adapter, Recline Shear Contoura (24" W)	1	2
18	D	1161800	Adapter, Recline Shear, Curve Contoura (16" W)	1	2
18	D	1161653	Adapter, Recline Shear, Curve Contoura (18" W)	1	2
18	D	1161658	Adapter, Recline Shear, Curve Contoura (20" W)	1	2
18	D	1161959	Adapter, Recline Shear, Curve Contoura (22" W)	1	2
18	D	1161823	Adapter, Recline Shear, Curve Contoura (24" W)	1	2

NOTE: A - Includes items 2-9. The Recline Shear Link and Recline Shear Link Stand-Off were revised as of 6/28/10. The Shear Link is now made of thicker material and the Stand-Off is thinner. The kit is backward compatible to all chairs in the field.  
B - Includes items 11-17. The Recline Shear Link and Recline Shear Link Stand-Off were revised as of 6/28/10. The Shear Link is now made of thicker material and the Stand-Off is thinner. The kit is backward compatible to all chairs in the field.  
C - Not used on Curve Contoura. For use on Contoura only  
D - Not used on Contoura. For use on Curve Contoura only