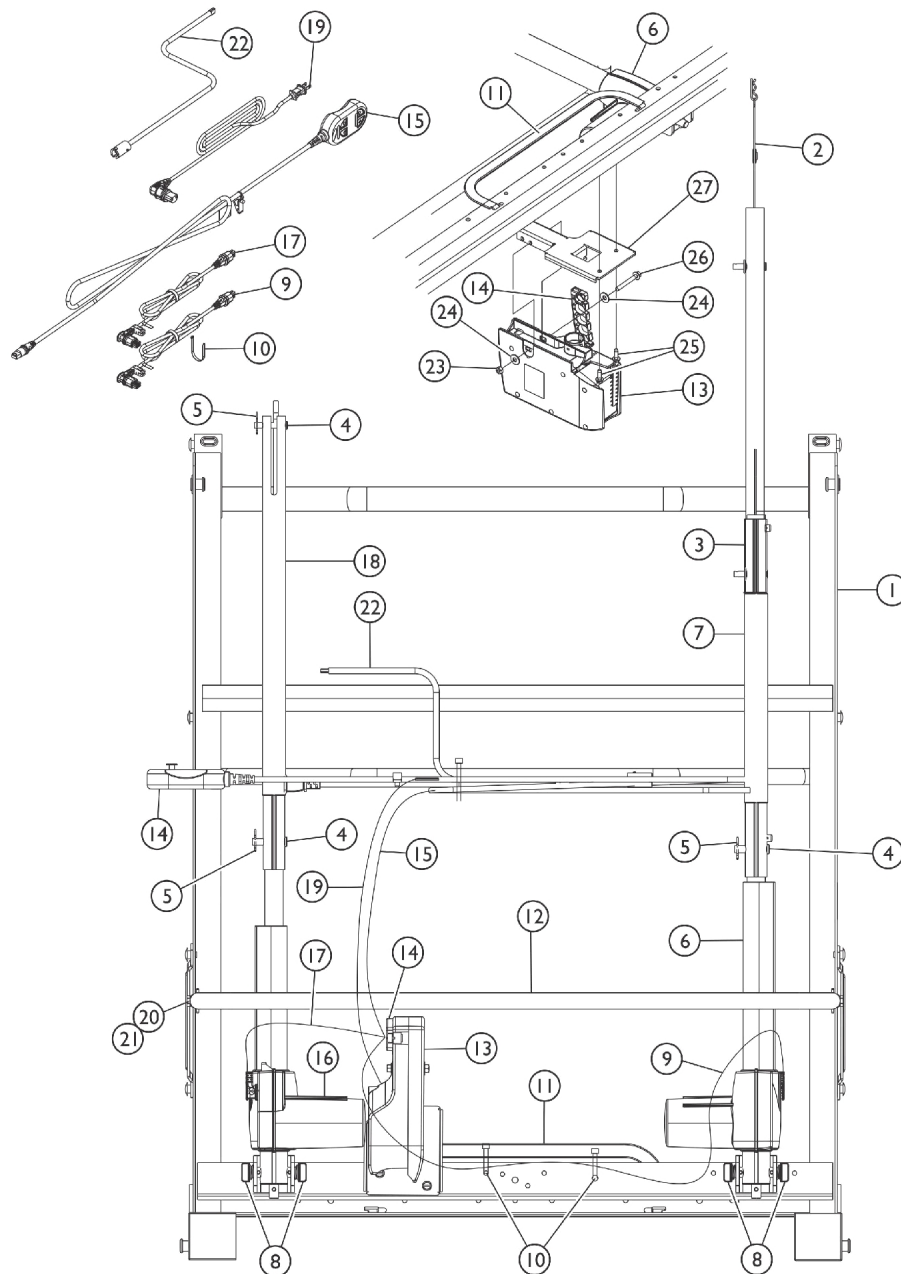


# Foot Spring - Semi Electric 5890IVC & 5891IVC

Part number 5770M028 cannot be serviced in the field. Invacare uses a stretching machine to put the springs on.

Drawing shows detailed view of frame from beneath the bed.



# Foot Spring - Semi Electric

## 5890IVC & 5891IVC

Part number 5770M028 cannot be serviced in the field. Invacare uses a stretching machine to put the springs on.

Item Number	Note	Part Number	Description	Quantity Per	
				Package	Assembly
1	Q	5770M028	Frame, Foot Spring (w/o Fabric), Brown	1	1
1		5770M000	Frame, Foot Spring (w/ Fabric)	1	1
2		5880M006	Lanyard with Hitch Pin Assembly	1	1
3	H	1122827	Tube, Pull, Head End Assembly	1	1
4		53000M957	Pin, Clevis (5/16 x 1-11/16")	1	2
5		51000M743	Pin, Hitch (3/8 x 1-3/16")	1	4
6	J	1121270	Kit, Head Motor Assembly	1	1
			Motor, Head with Pull Tube	1	1
			Instruction Sheet, Motor Head Assembly	1	1
7	M	1115561	Tube, Pull, Motor Head - Outer	1	1
8		5300M054	Mount, Motor	1	4
9		1116641	Cable, Head Actuator w/ Blue O-Ring	1	1
10		51000M562-NLA	NLA - Tie Wrap	1	1
11		026159	Stop, Mattress	1	1
12	O	1121172	Guard, Motor	1	1
12	P	1161264-NLA	NLA - Kit, Motor Guard	1	1
12			NLA - Guard, Motor (5-3/4" Tall)	1	1
20			Screw, Hex Head Flanged (5/16-18 x 3/4")	1	2
21			NLA - Nut, Keps (5/16-18)	1	2
			Instruction Sheet, Motor Guard Kit	1	1
13	B,E	1117177	Controller/Junction Box, 2 Function with Label	1	1
13	C,E	1119166	Controller/Junction Box, 2 Function - French/Canadian	1	1
14		1116655	Lock, Cable	1	1
15	B	1115288	Pendant, Semi-Electric, 4 Channel	1	1
15	C,G	1119170-NLA	NLA - Pendant, Semi-Electric, 4 Channel - Canadian	1	1
16	F,I	1116644	Motor, Foot with Pull Tube	1	1
17		1116642	Cable, Foot Actuator w/ Yellow O-Ring	1	1
18		1115557	Tube, Pull, Motor Foot	1	1
19		1128179	Cord, Power	1	1
20		1168862	Screw, Hex Head Flanged (5/16-18 x 3/4")	1	2
21		000037-NLA	NLA - Nut, Keps (5/16-18)	1	2
22		5880M004	Crank, Emergency, Dark Brown	1	1
23		15108X000	Locknut (1/4-20)	1	1
24		007478	Washer (13/32 x 13/16 x 1/16)	1	2
25		54000M515	Screw, Slotted Hex Head Tap (1/4-20 x 3/4")	1	2
26		54000M179	Screw, Hex Head (1/4-20 x 2")	1	1
27		1127718	Bracket, Control Box Mounting	1	1
	A,N	51000M135	Spring, Helical (11 turns)	1	20
	A	51000M136	Spring, Helical (18 turns)	1	6
	A	51000M134	Fabric, Link - Foot Spring (19 x 7")	1	1
	A,R	54000M441	Clip, Pendant	1	1

# Foot Spring - Semi Electric

## 5890IVC & 5891IVC

**Part number 5770M028 cannot be serviced in the field. Invacare uses a stretching machine to put the springs on.**

Item Number	Note	Part Number	Description	Quantity Per	
				Package	Assembly
	A	52000M316-NLA	NLA - Kit, Pendant Clip w/ Instruction Sheet	1	1
	A,D	026975-NLA	NLA - Clip, Pendant - Plastic "C"	1	1
	A,B	1114836	Owner's Manual, IVC Beds - U.S.	1	1
	A,C	1118372	Owner's Manual, IVC Beds - French/Canadian	1	1
	A,K,L	1127719-NLA	NLA - Kit, Control/Junction Box Mounting Bracket	1	1
	A	1111018	Decal, 450 LB Weight Capacity	1	1

NOTE:

- A - Not Shown.
- B - US Models Only
- C - Canadian Models Only.
- D - Accessory Item - Does not come with assembly.
- E - This item is separate from the Foot Motor and Clip-Lock. When Having these items serviced, please disconnect parts from one another.
- F - This item is separate from the Controller and Clip-Lock. When Having these items serviced, please disconnect parts from one another.
- G - The Pendant is sold as one unit - the cord "extension" is not sold separately.
- H - Includes: Item 2.
- I - Includes: Items 4, 5, and 18.
- J - Includes: Items 2, 3, 4, 5, and 6.
- K - Includes: Items 22, 23, 24, 25, and 26.
- L - The Control/Junction Box location was moved from being attached to the Foot Motor to attached to the Bed Frame 6/30/04. If your Bed was manufactured before 6/30/04, please order the Control/Junction Box Mounting Kit for proper installation.
- M - This is an individual part, please see item #6 for the complete assembly.
- N - As of 9/22/08 the number of 11 turn Helical Springs used is a quantity of 20 and is applicable to Foot Springs manufactured before 9/22/08 as well.
- O - Before 5/18/09
- P - After 5/17/09. The motor support bracket was relocated from the motor guard to the foot frame assembly. This improves alignment of the head motor shaft and pull tube assembly when attached to the head section lift arm.
- Q - Part cannot be serviced in the field. Invacare uses a stretching machine to put the springs on.
- R - An instruction sheet for the Pendant Clips (Part. No. 54000M181) is available to download at [invacare.com](http://invacare.com) under "Product Literature Search" link.