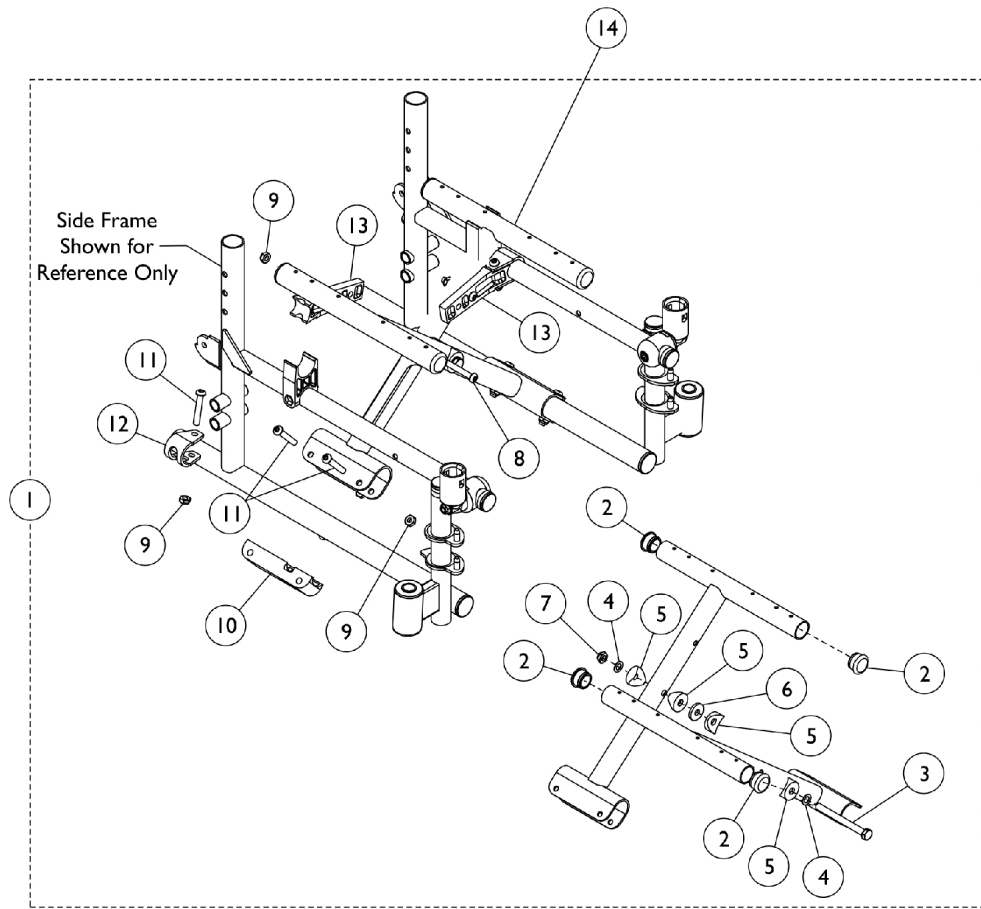


# Crossbraces and Hardware



## Crossbraces and Hardware

Item Number	Note	Part Number	Description	Quantity Per	
				Package	Assembly
1	A,B	1100971	Hardware, Crossbrace (10 - 12" W)	1	1
1	B,C	1046925	Hardware, Crossbrace (14 - 15" W)	1	1
1	B,D	1034077	Hardware, Crossbrace (16 - 18" W)	1	1
2	F	1056328	Plug Button, Black (1")	1	4
2	C,D	1029501	Plug Button, Black (1")	1	4
3		1016261	Screw, Hex Head (5/16-24 x 3-1/4")	1	1
4		1016652	Washer (5/16 x 9/16 x 1/32")	1	2
5		1016263	Spacer, Coved (3/4 x 1 x 1/2")	1	4
6		1016301	Washer, Nylon (5/16 x 7/8 x 1/8")	1	1
7		60264X001	Locknut (5/16-24)	1	1
8		1001762	Screw, Socket Button Head (1/4-20 x 1-3/4")	1	2
9		60275X000	Locknut (1/4-20)	1	8
10		1012172-NLA	NLA - Clamp, Saddle	1	2
11		1008495	Screw, Socket Button Head (1/4-20 x 1-1/2")	1	6
12		1012180	Bracket, Pivot, Black	1	2
13	A	1100610	Link, Pivot, Black (10 - 12" W)	1	2
13	C	1046501	Link, Pivot, Black (14 - 15" W)	1	2
13	D	1012173	Link, Pivot, Black (16 - 18" W)	1	2
14		1098453	Crossbrace w/o Hardware, Black (10" W x 10" D)	1	2
14		1098455	Crossbrace w/o Hardware, Black (12" W x 10" D)	1	2
14	E	1098454	Crossbrace w/o Hardware, Black (12" W x 12" D)	1	2
14	E	1098456	Crossbrace w/o Hardware, Black (14" W x 12" D)	1	2
14	E	1119543	Crossbrace w/o Hardware, Black (16" W x 12" D)	1	2

NOTE: A - For 10-12" Wide Chairs.  
 B - Includes items 2-13.  
 C - For 14-15" Wide Chairs.  
 D - For 16-18" Wide chairs.  
 E - A Seat Extension Kit is needed for chairs over 12" deep. See category titled, "Seat Extension Kits."  
 F - Use 1029501 as replacement part.