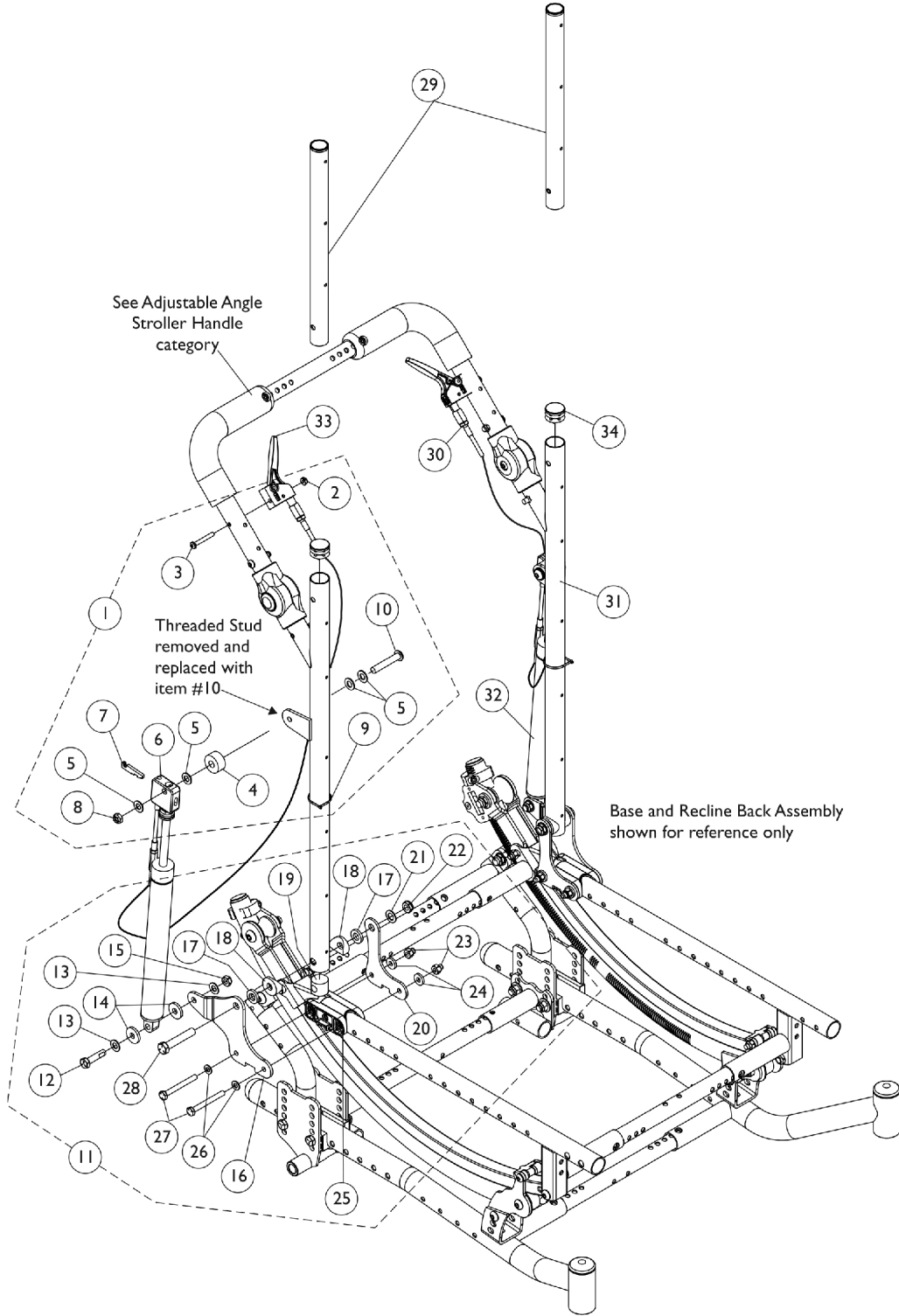


# Reclining Back Hardware (RECLINER) Option

Manual Recliner uses "Stroller Handle - Adjustable Angle - Outside Mount - AASH".  
See this category for more information.



# Reclining Back Hardware (RECLINER) Option

Manual Recliner uses "Stroller Handle - Adjustable Angle - Outside Mount - AASH".  
See this category for more information.

Item Number	Note	Part Number	Description	Quantity Per	
				Package	Assembly
1	A	1164123	Kit, Cable Release Hardware	1	1
2			Locknut (10-32)	1	1
3			Screw, Phillip Pan Head (10-32 x 1-3/8")	1	1
4			Spacer (3/8 x 1 x 1/2")	1	1
5			Washer, Steel (21/64 x 5/8 x 3/64")	1	4
6			Bracket, Cylinder Release, Black	1	1
7			Lever, Cylinder Release	1	1
8			Locknut (5/16-24)	1	1
9			Tie Wrap (3-29/32" L)	1	1
10			NLA - Screw, Socket Button Head (5/16-24 x 1-3/4")	1	1
11	B	1164124	Kit, Reclining Back Hardware - Right	1	1
12			Screw, Hex Head w/ Patch (5/16-18 x 1-1/4")	1	1
13			Washer, Steel (21/64 x 5/8 x 3/64")	1	2
14			Washer, Nylon (5/16 x 7/8 x 1/8")	1	2
15			Locknut (5/16-18)	1	1
16			Bracket, Outer Back, Recliner, Black - Right	1	1
17			Washer, Nylon (13/32 x 3/4 x 1/8")	1	2
18			NLA - Spacer, Coved (3/8 x 1 x 9/16")	1	2
19			Plug	1	2
20			Bracket, Inner Back, Recliner, Black	1	1
21			Washer (25/64 x 11/16 x 1/32")	1	1
22			Locknut (3/8-16)	1	1
23			Nut, Hex Nylon (1/4-28)	1	2
24			Washer, Steel (1/4 x 5/8 x 3/32")	1	2
25			Uni-Washer, Dual	1	1
26			NLA - Washer, Steel (1/4 x 1/2 x 3/64")	1	2
27			Screw, Hex Head (1/4-28 x 2-1/4")	1	2
28			Screw, Hex Head (3/8-16 x 2")	1	1
11	B	1164125	Kit, Reclining Back Hardware - Left	1	1
12			Screw, Hex Head w/ Patch (5/16-18 x 1-1/4")	1	1
13			Washer, Steel (21/64 x 5/8 x 3/64")	1	2
14			Washer, Nylon (5/16 x 7/8 x 1/8")	1	2
15			Locknut (5/16-18)	1	1
16			Bracket, Outer Back, Recliner, Black - Left	1	1
17			Washer, Nylon (13/32 x 3/4 x 1/8")	1	2
18			NLA - Spacer, Coved (3/8 x 1 x 9/16")	1	2
19			Plug	1	2
20			Bracket, Inner Back, Recliner, Black	1	1
21			Washer (25/64 x 11/16 x 1/32")	1	1
22			Locknut (3/8-16)	1	1
23			Nut, Hex Nylon (1/4-28)	1	2
24			Washer, Steel (1/4 x 5/8 x 3/32")	1	2
25			Uni-Washer, Dual	1	1
26			NLA - Washer, Steel (1/4 x 1/2 x 3/64")	1	2
27			Screw, Hex Head (1/4-28 x 2-1/4")	1	2

# Reclining Back Hardware (RECLINER) Option

Manual Recliner uses "Stroller Handle - Adjustable Angle - Outside Mount - AASH".  
See this category for more information.

Item Number	Note	Part Number	Description	Quantity Per	
				Package	Assembly
28			Screw, Hex Head (3/8-16 x 2")	1	1
29		1070998	Headrest Extension Tube Assembly, Black - Right	1	1
29		1070999	Headrest Extension Tube Assembly, Black - Left	1	1
30		1082638	Cable Release Assembly	1	2
31	D	1127787-NLA	NLA - Cane, Back, Recliner, Black - Right	1	1
31	D	1127788-NLA	NLA - Cane, Back, Recliner, Black - Left	1	1
32		1050154	Cylinder, Lock, Recline	1	2
33		1078318	Handle, Cable Release, Black	1	2
34	C	1134425	Package, Plug Button, Black (1")	10	2
<p>NOTE: A - Includes item 2 - 10. The kit accommodates one side only. Hardware revised 10/16/09 and is backward compatible with chairs manufactured before 10/16/09. Threaded stud on Recliner Back Cane was replaced with Screw (Item 10) and two more Washers (Item 5).            B - Includes items 12 - 28.            C - Plug Buttons are not used when the Headrest Extension Tubes are used.            D - When a new Recliner Back Cane is ordered for chairs manufactured before 10/16/09, new Cable Release Hardware (Item 1) is recommended also. Recliner Back Canes do not have to be replaced in pairs.</p>					