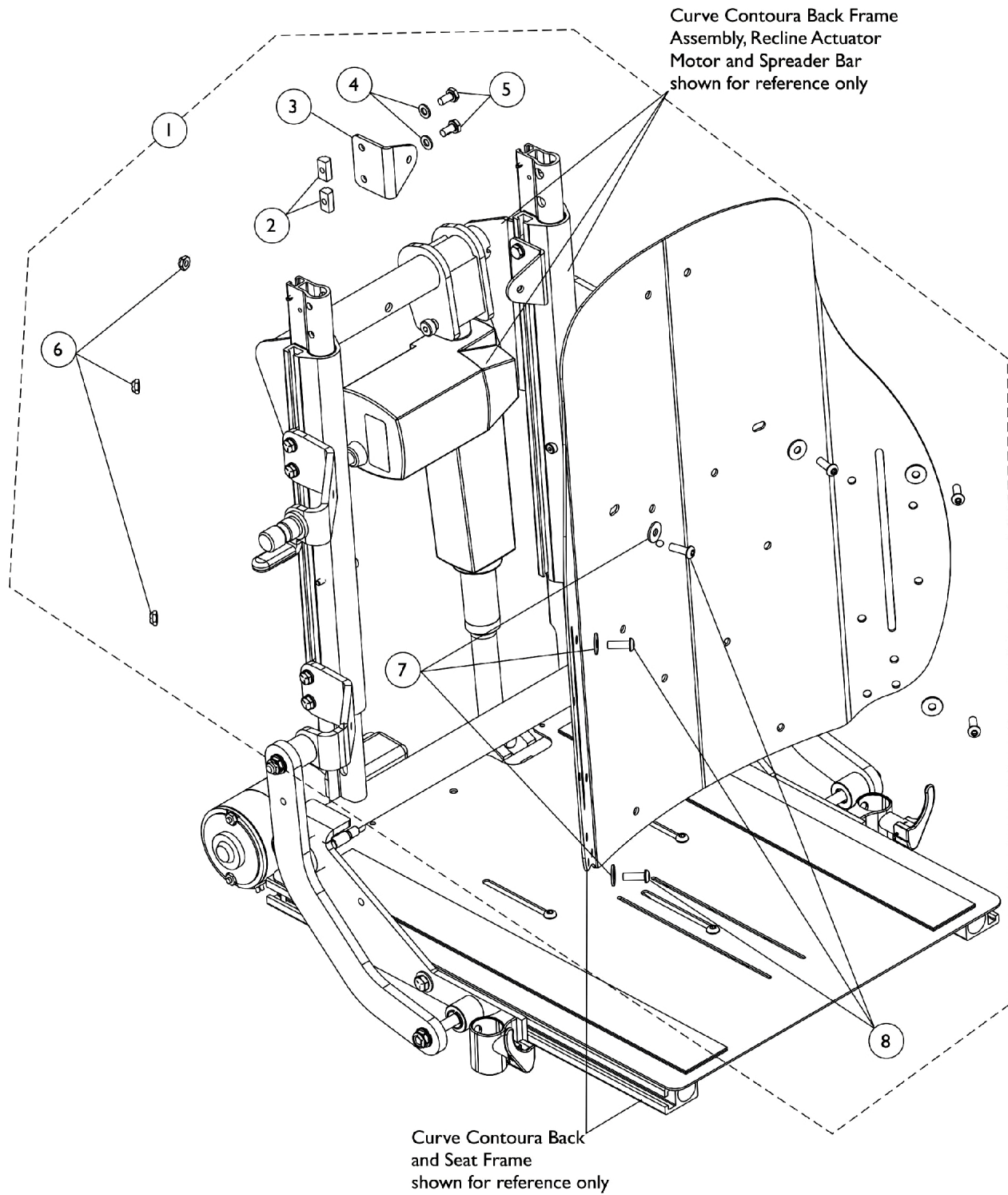


Back Mounting Hardware

Curve Contoura CGTR/CGTRE (16" - 22" Wide)



Back Mounting Hardware

Curve Contoura CGTR/CGTRE (16" - 22" Wide)

Item Number	Note	Part Number	Description	Quantity Per	
				Package	Assembly
1	A	1169003-NLA	NLA - Kit, Back Mounting Hardware For Curve Contoura Recline and Tilt/Recline	1	1
2			T-Nut (1/4-20)	1	4
3			Bracket, Back Mounting, Black	1	2
4			Washer (1/4 x 1/2 x 1/16")	1	4
5			Screw, Hex Head w/ Patch (1/4-20 x 1/2")	1	4
6			Locknut (1/4-20)	1	6
7			Washer (1/4 x 23/32 x 1/16")	1	6
8			Screw, Socket Button (1/4-20 x 3/4")	1	6
NOTE: A - Includes items 2-8					