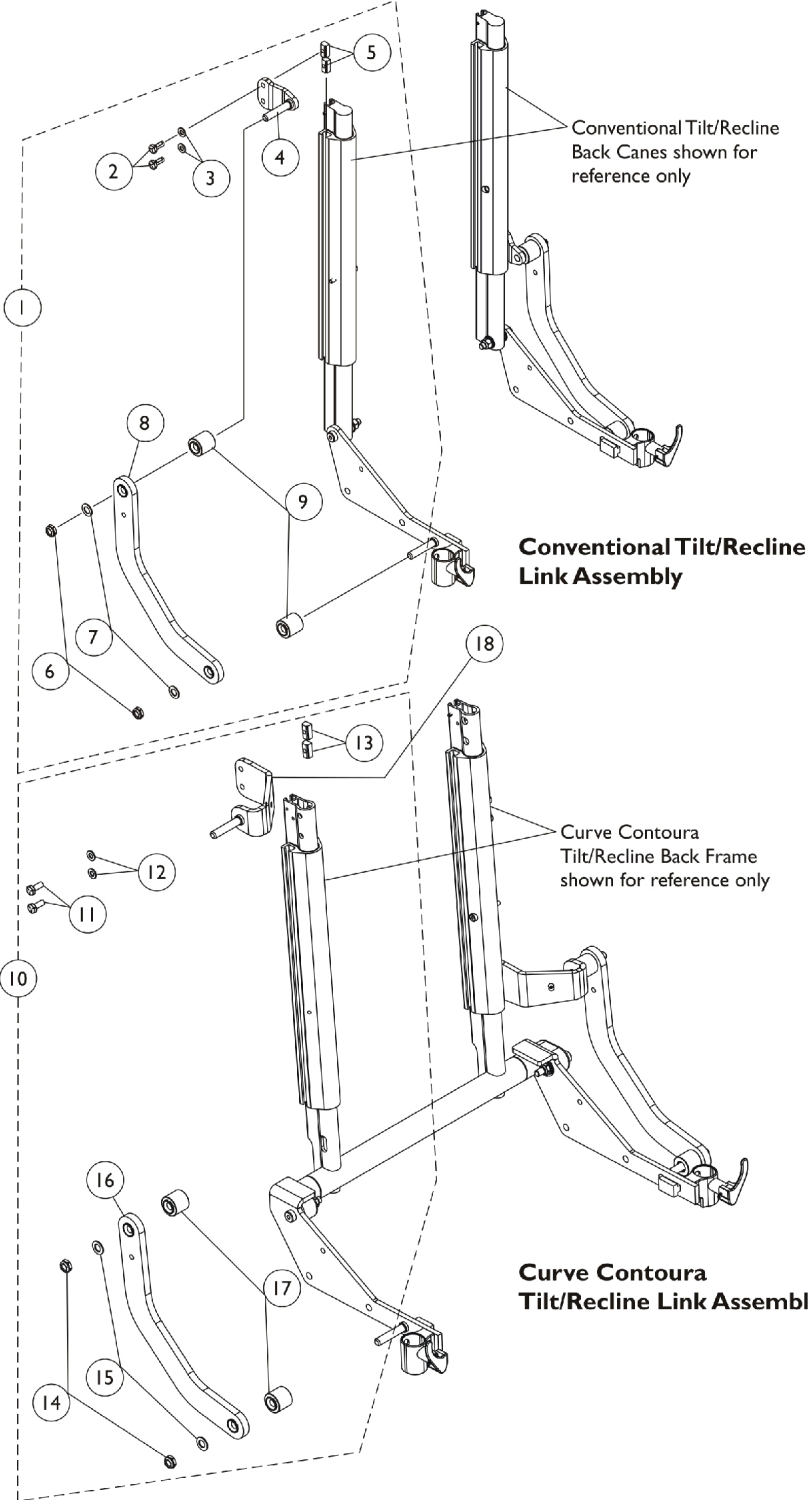


Back Recline Shear Link Assemblies



Conventional Tilt/Recline
Back Canes shown for
reference only

**Conventional Tilt/Recline
Link Assembly**

Curve Contour
Tilt/Recline Back Frame
shown for reference only

**Curve Contour
Tilt/Recline Link Assembly**

Back Recline Shear Link Assemblies

Item Number	Note	Part Number	Description	Quantity Per	
				Package	Assembly
1	A	1125758	Kit, Recline Shear Link Assembly Conventional (Pair)	1	1
2			Screw, Hex Head w/ Patch (1/4-20 x 5/8")	1	4
3			Washer (1/4 x 1/2 x 1/16")	1	4
4			Plate, Shear Adapter	1	2
5			T-Nut (1/4-20)	1	4
6			Locknut, Low Profile (3/8-16)	1	4
7			Washer, Flat (3/8 x 11/16 x 1/16")	1	4
8			Link, Recline Shear, Black - Right	1	1
8			Link, Recline Shear, Black - Left	1	1
9			Stand-Off, Recline Shear Link	1	4
10	B	1168997	Kit, Recline Shear Link Assembly, Contoura/Curve Contoura (Pair)	1	1
11			Screw, Hex Head w/ Patch (1/4-20 x 5/8")	1	4
12			Washer (1/4 x 1/2 x 1/16")	1	4
13			T-Nut (1/4-20)	1	4
14			Locknut, Low Profile (3/8-16)	1	4
15			Washer, Flat (3/8 x 11/16 x 1/16")	1	4
16			Link, Recline Shear, Black - Right	1	1
16			Link, Recline Shear, Black - Left	1	1
17			Stand-Off, Recline Shear Link	1	4
18		1161800	Adapter, Recline Shear, Curve Contoura (16" W)	1	2
18		1161653	Adapter, Recline Shear, Curve Contoura (18" W)	1	2
18		1161658	Adapter, Recline Shear, Curve Contoura (20" W)	1	2
18		1161959	Adapter, Recline Shear, Curve Contoura (22" W)	1	2
NOTE: A - Includes items 2-9 B - Includes items 11-17					