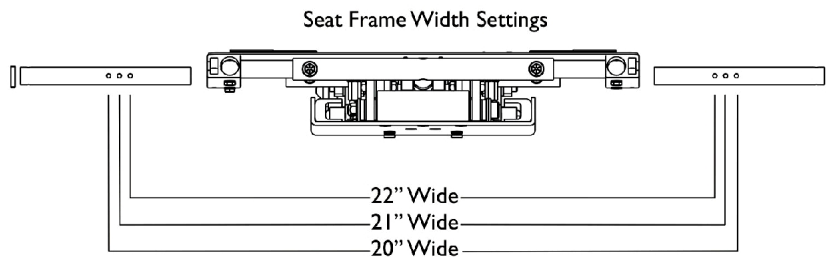
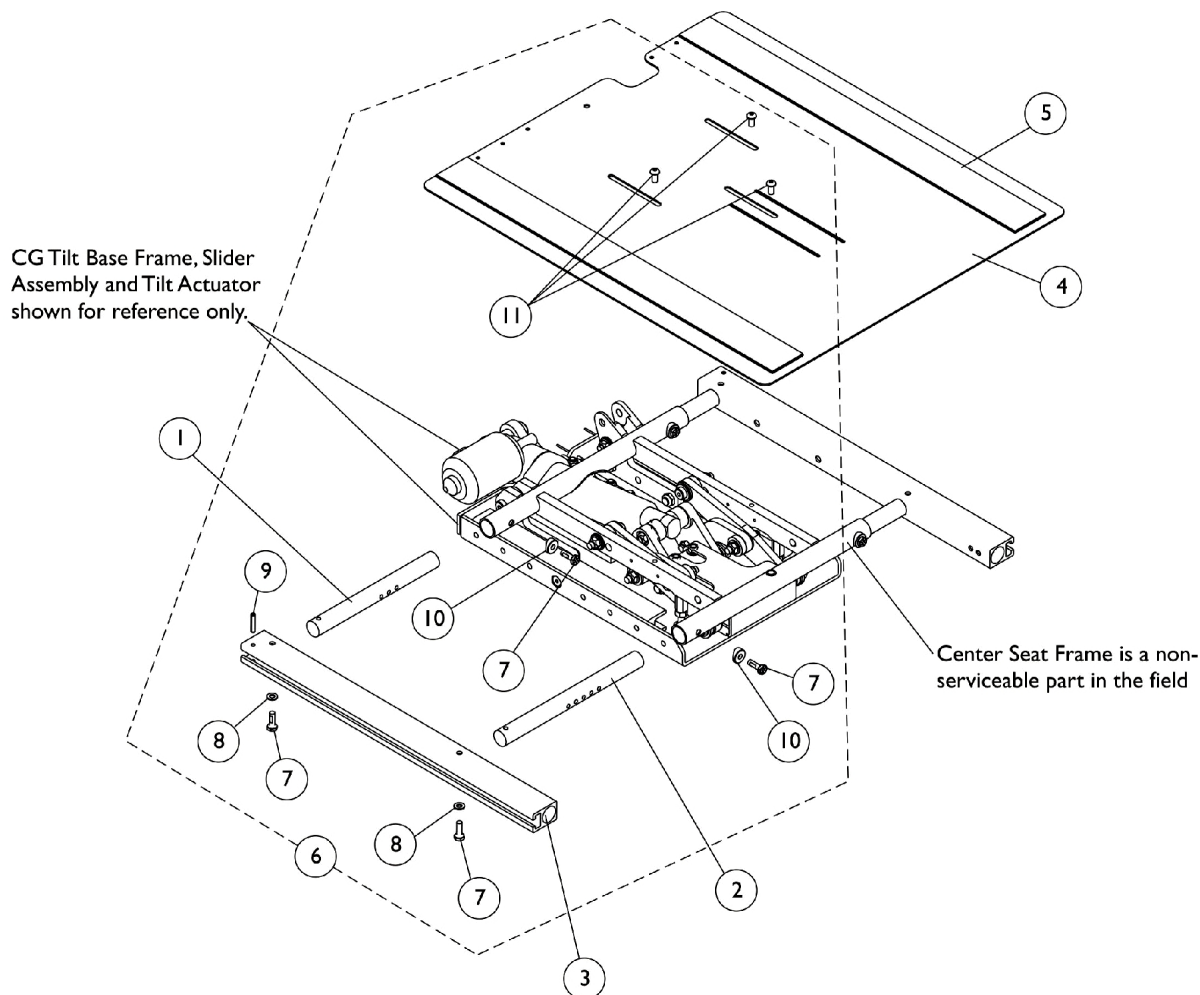


# Seat Frame, Seat Pan and Hardware

(20" - 22" Wide x 16" - 22" Deep) Conv., (20", 22" W x 16" - 22" Deep) Curve Contoura

Non-serviceable parts in the field require the wheelchair to be returned to Invacare for repair. Call Technical Services for assistance (1-800-832-4707)



# Seat Frame, Seat Pan and Hardware

## (20" - 22" Wide x 16" - 22" Deep) Conv., (20", 22" W x 16" - 22" Deep) Curve Contoura

Non-serviceable parts in the field require the wheelchair to be returned to Invacare for repair. Call Technical Services for assistance (1-800-832-4707)

Item Number	Note	Part Number	Description	Quantity Per	
				Package	Assembly
1		1166878-NLA	NLA - Crossbar, Seat Frame, Rear (20" - 22" W)	1	2
2	E	1120283	Crossbar, Seat Frame (20" - 24" W)	1	2
3	D	1142951	Rail, Seat Frame (For 12 - 19" D Conventional)	1	2
3	D	1142952	Rail, Seat Frame (For 19 - 22" D Conventional)	1	2
4	E	1166951	Pan, Seat, with Hook and Loop Fasteners (20" - 24" W x 16" - 19" D)	1	1
4	E	1166952	Pan, Seat, with Hook and Loop Fasteners (20" - 24" W x 19" - 22" D)	1	1
5	A	1043082	Hook Fastener with Adhesive Back (2" W x 18" L)	1	2
5	A	1044580	Loop Fastener with Adhesive Back (2" W x 18" L)	1	2
5	B	1043084	Hook Fastener with Adhesive back (2" W x 22" L)	1	2
5	B	1044584	Loop Fastener with Adhesive back (2" W x 22" L)	1	2
6	C	1169000	NLA - Kit, Seat Frame Assembly Hardware	1	1
7			Screw, Hex Head w/ Patch (1/4-20 x 3/4")	1	8
8			Washer (1/4 x 1/2 x 1/16")	1	4
9			NLA - Pin, Roll (3/16 x 1")	1	2
10			Spacer, Coved (1/4 x 11/16 x 1/2")	1	4
11			NLA - Screw, Socket Button Head (1/4-20 x 1/2")	1	3
NOTE: A - For 16 - 19" deep seat pans. B - For 19 - 22" deep seat pans. C - Includes items 7-11. D - Seat Rail used for Curve Contoura Seating also. E - FDX model configuration goes up to 22" wide only.					