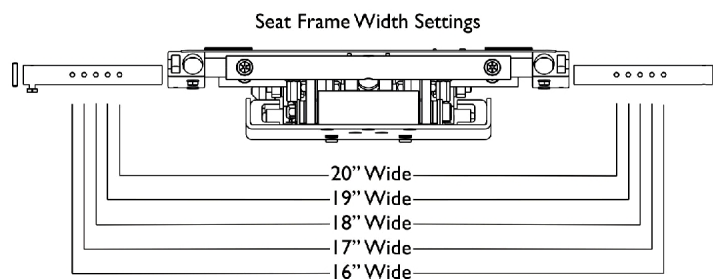
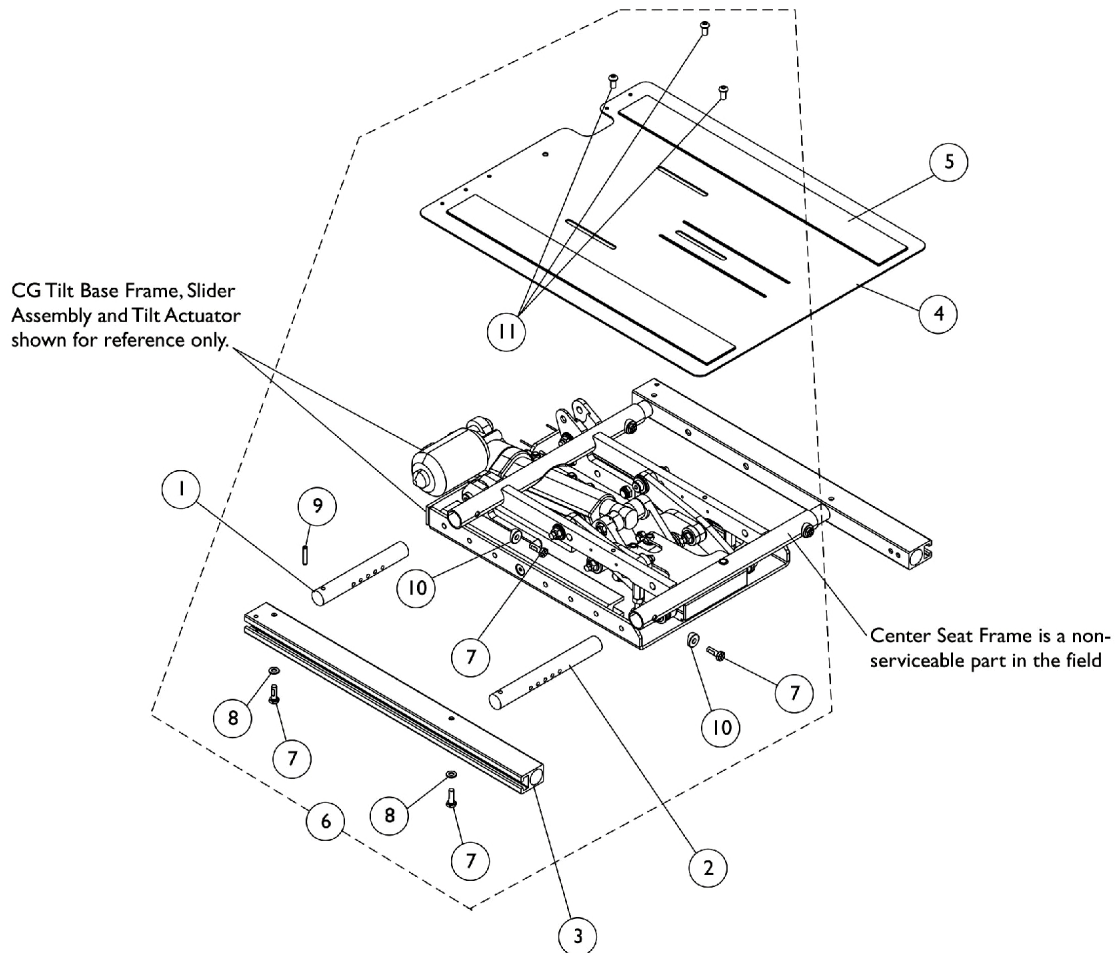


Seat Frame, Seat Pan and Hardware

(16" - 20" Wide x 16" - 22" Deep) Conv., (16", 18", 20" Wide x 16" - 22" Deep) Curve Contoura

Non-serviceable parts in the field require the wheelchair to be returned to Invacare for repair. Call Technical Services for assistance (1-800-832-4707)



Seat Frame, Seat Pan and Hardware

(16" - 20" Wide x 16" - 22" Deep) Conv., (16", 18", 20" Wide x 16" - 22" Deep) Curve Contoura

Non-serviceable parts in the field require the wheelchair to be returned to Invacare for repair. Call Technical Services for assistance (1-800-832-4707)

Item Number	Note	Part Number	Description	Quantity Per	
				Package	Assembly
1		1166877-NLA	NLA - Crossbar, Seat Frame, Rear (16" - 20" W)	1	2
2		1122475	Crossbar, Seat Frame (16" - 20" W)	1	2
3	D	1142951	Rail, Seat Frame (For 12 - 19" D Conventional)	1	2
3	D	1142952	Rail, Seat Frame (For 19 - 22" D Conventional)	1	2
4		1166948	Pan, Seat, with Hook and Loop Fasteners (16" - 20" W x 16" - 19" D)	1	1
4		1166950	Pan, Seat, with Hook and Loop Fasteners (16" - 20" W x 19" - 22" D)	1	1
5	A	1043082	Hook Fastener with Adhesive Back (2" W x 18" L)	1	2
5	A	1044580	Loop Fastener with Adhesive Back (2" W x 18" L)	1	2
5	B	1043084	Hook Fastener with Adhesive back (2" W x 22" L)	1	2
5	B	1044584	Loop Fastener with Adhesive back (2" W x 22" L)	1	2
6	C	1169000	NLA - Kit, Seat Frame Assembly Hardware	1	1
7			Screw, Hex Head w/ Patch (1/4-20 x 3/4")	1	8
8			Washer (1/4 x 1/2 x 1/16")	1	4
9			NLA - Pin, Roll (3/16 x 1")	1	2
10			Spacer, Coved (1/4 x 11/16 x 1/2")	1	4
11			NLA - Screw, Socket Button Head (1/4-20 x 1/2")	1	3
NOTE: A - For 16 - 19" deep seat pans B - For 19 - 22" deep seat pans C - Includes items 7-11 D - Seat Rails are used for Curve Contoura Seating as well.					