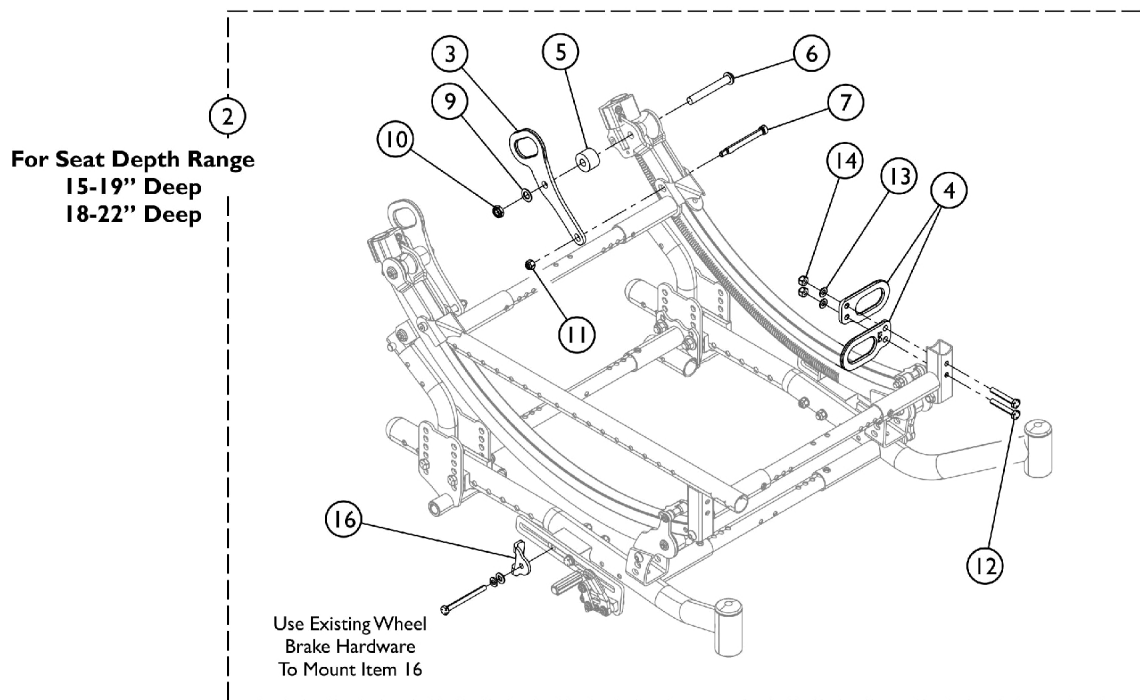
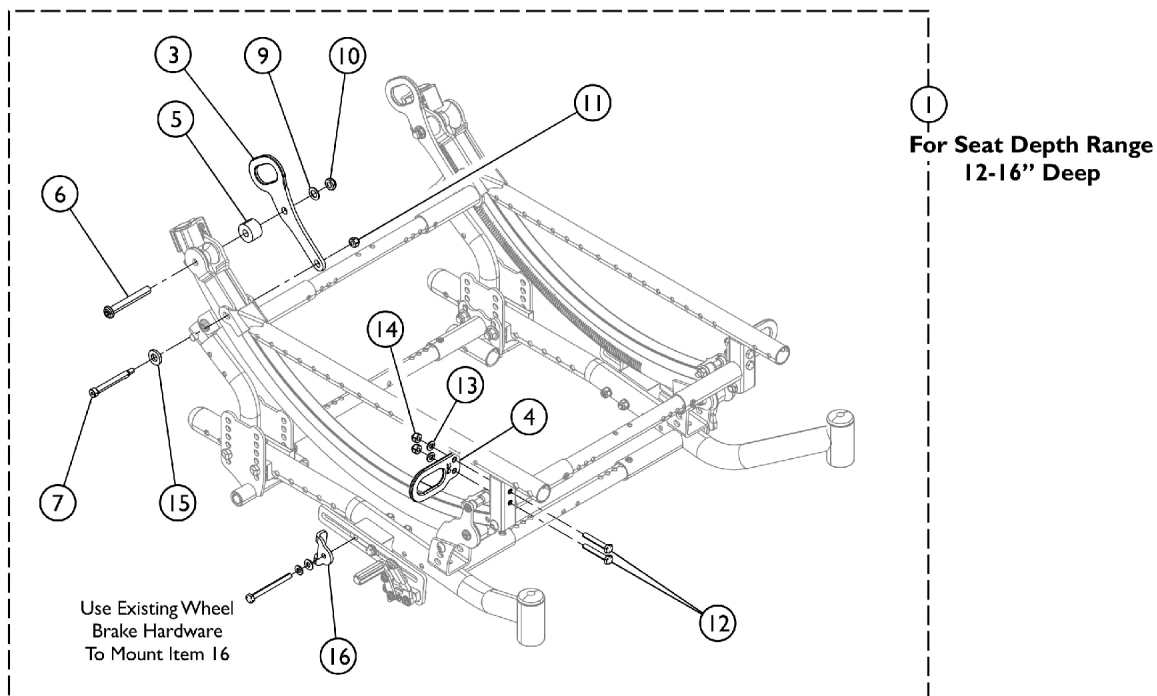


Transport Brackets and Hardware - Front/Rear (TRBKTS) Option (First Time Field Installation Kits)



Transport Brackets and Hardware - Front/Rear (TRBKTS) Option (First Time Field Installation Kits)

Item Number	Note	Part Number	Description	Quantity Per	
				Package	Assembly
1	A	1167663	Kit, Transport Brackets and Mounting Hardware - Front/Rear (12" - 16" D)	1	1
3			Bracket, Tie - Down, Transport - Rear	1	2
4			Bracket, Tie - Down, Transport - Front	1	2
5			Spacer, Nylon (3/8 x 1 x 5/8")	1	2
6			Screw, Button Head, Socket (3/8-16 x 2-3/4")	1	2
7			NLA - Screw, Shoulder Hex Socket Head (5/16" x 2-1/4", 1/4-20)	1	2
9			Washer (25/64 x 11/16 x 1/32")	1	2
10			Locknut (3/8-16)	1	2
11			Locknut (1/4-20)	1	2
12			Screw, Hex Head (1/4-28 x 1-5/8")	1	4
13			NLA - Washer, Steel (1/4 x 1/2 x 3/64")	1	4
14			Locknut (1/4-28)	1	4
15			Washer (25/64 x 13/16 x 1/8")	1	2
16			Bracket, Reinforcing, Wheel Lock	1	2
			Instruction Sheet, Transport Bracket Installation	1	1
2	B	1167664	Kit, Transport Bracket and Mounting Hardware - Front/Rear (15 - 22" D)	1	1
3			Bracket, Tie - Down, Transport - Rear	1	2
4			Bracket, Tie - Down, Transport - Front	1	2
5			Spacer, Nylon (3/8 x 1 x 5/8")	1	2
6			Screw, Button Head, Socket (3/8-16 x 2-3/4")	1	2
7			Screw, Shoulder Hex Socket Head (5/16" x 2-1/2", 1/4-20)	1	2
9			Washer (25/64 x 11/16 x 1/32")	1	2
10			Locknut (3/8-16)	1	2
11			Locknut (1/4-20)	1	2
12			Screw, Hex Head (1/4-28 x 1-5/8")	1	4
13			NLA - Washer, Steel (1/4 x 1/2 x 3/64")	1	4
14			Locknut (1/4-28)	1	4
16			Bracket, Reinforcing, Wheel Lock	1	2
			Instruction Sheet, Transport Bracket Installation	1	1

NOTE: A - Includes items 3 - 7, and 9 - 16. Also includes Instruction Sheet for which replacements can also be downloaded from the Invacare website.
B - Includes items 3 - 7, 9 - 14, and Item 16. Also includes Instruction Sheet for which replacements can also be downloaded from the Invacare website.