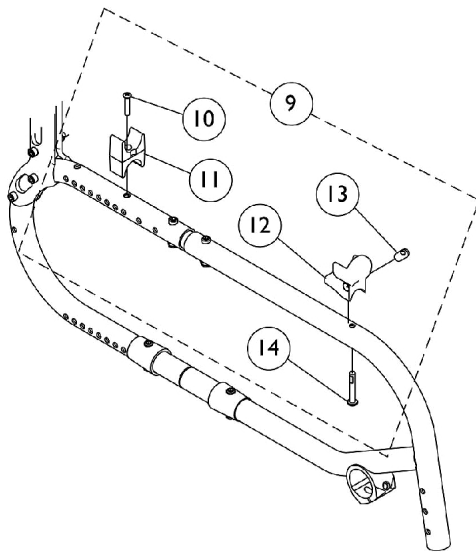
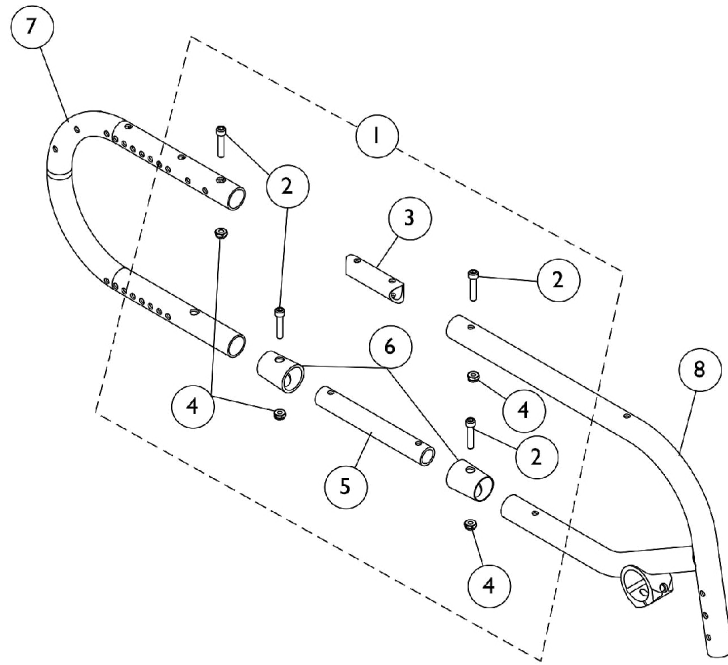
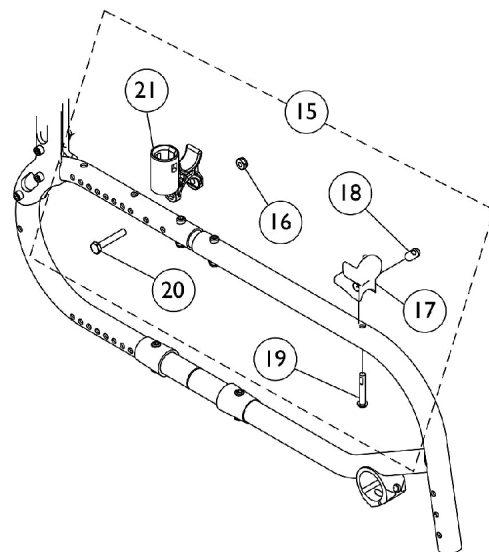


Frames and Frame Hardware - Fixed Front

Transport Ready Chairs (TRRO) requiring Frames and/or Frame Hardware parts must be returned to Invacare for service.



**Seat Guide Hardware for
Swingaway Padded Arms
and "T" Arms**



**Seat Guide Hardware for
Conventional Adjustable Height Arms**

Frames and Frame Hardware - Fixed Front

Transport Ready Chairs (TRRO) requiring Frames and/or Frame Hardware parts must be returned to Invacare for service.

Item Number	Note	Part Number	Description	Quantity Per	
				Package	Assembly
1	A	1130541	Kit, Frame Hardware	1	1
2			Screw, Socket Head (1/4-28 x 1-1/4")	1	8
3			Tube, Upper Frame, Black	1	2
4			Locknut (1/4-28)	1	8
5			Tube, Lower Frame	1	2
6			Cap, End, Black Crossbrace	1	4
7	B	8881127987	Frame, Rear, Color	1	1
8	B,C	See Chart	#8 Front Frames - 70 Degree	1	1
8	B,C	See Chart	#8 Front Frames - 80 Degree	1	1
9	D	1136559	Kit, Seat Guide Hardware	1	1
10			NLA - Screw, Phillips Oval Head (#10-32 x 1")	1	2
11			Clamp, Seat	1	2
12			H-Block, Front - Right	1	1
12			H-Block, Front - Left	1	1
13			Pin, Threaded (3/8" x 3/4")	1	2
14			Screw, Socket Button Head w/ Patch (1/4-20 x 3/4")	1	2
15	E	1136560	Kit, Seat Guide Hardware	1	1
16			Locknut (1/4-28)	1	2
17			H-Block, Front - Right	1	1
17			H-Block, Front - Left	1	1
18			Pin, Threaded (3/8" x 3/4")	1	2
19			Screw, Socket Button Head w/ Patch (1/4-20 x 3/4")	1	2
20			Screw, Hex Head (1/4-28 x 1-5/8")	1	2
21			Socket, Arm	1	2

NOTE: A - Includes items 2 thru 6.
 B - Specify frame finish when ordering.
 C - Front Frames include the "X4" and Invacare logo decals. See Decal category for individual decal part nos.
 D - Chairs with Swingaway Half Arms or "T" Arms. Includes items 10 thru 14.
 E - Chairs with Conventional Adjustable Height Arms. Includes items 16 thru 21.

Frames and Frame Hardware - Fixed Front

Transport Ready Chairs (TRRO) requiring Frames and/or Frame Hardware parts must be returned to Invacare for service.

#8 Front Frames - 70 Degree

Includes Frame and "X4" and Invacare logo decals

14" Deep	15" Deep	16" Deep	17" Deep	18" Deep	19" Deep	20" Deep
8881136568-NL A	8881136569	8881136570-NL A	8881136571	8881136572-NL A	8881136573-NL A	8881136574-NL A
See Note(s) A	See Note(s) A	See Note(s) A	See Note(s) A	See Note(s) A	See Note(s) A	See Note(s) A
NOTE: A - Specify frame finish when ordering.						

#8 Front Frames - 80 Degree

Includes Frame and "X4" and Invacare logo decals

14" Deep	15" Deep	16" Deep	17" Deep	18" Deep	19" Deep	20" Deep
8881136561	8881136562	8881136563	8881136564	8881136565	8881136566	8881136567
See Note(s) A	See Note(s) A	See Note(s) A	See Note(s) A	See Note(s) A	See Note(s) A	See Note(s) A
NOTE: A - Specify frame finish when ordering.						