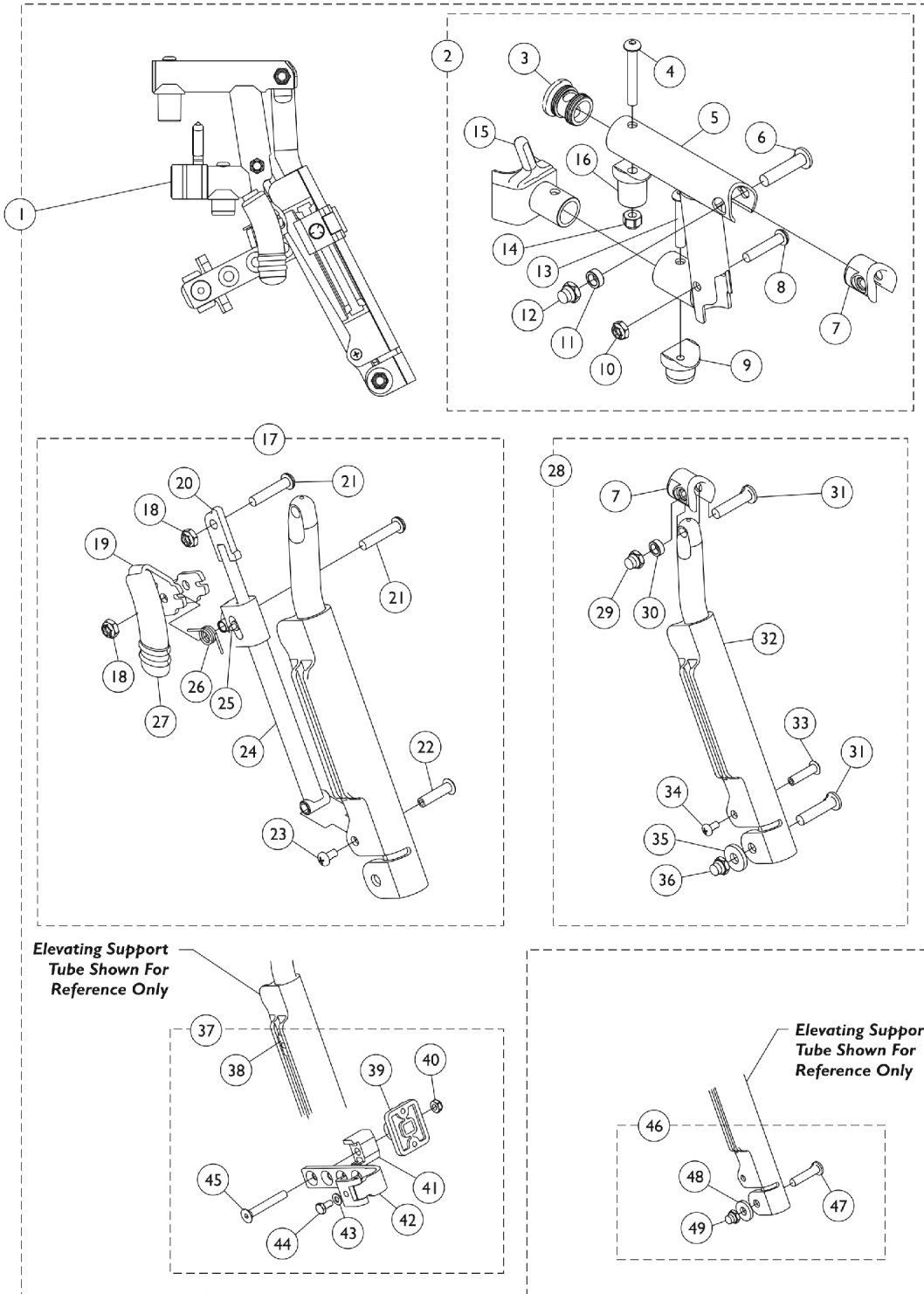


Lift Off Legrest Support Assembly (AT5044LIFT)

Specify frame color when ordering. Legrest Support does not include Legrest Pad.



Lift Off Legrest Support Assembly (AT5044LIFT)

Specify frame color when ordering. Legrest Support does not include Legrest Pad.

Item Number	Note	Part Number	Description	Quantity Per	
				Package	Assembly
1	A	8881159460	Legrest Support Assembly, Sector, Lift Off, Color - Right	1	1
1	A	8881159461	Legrest Support Assembly, Sector, Lift Off, Color - Left	1	1
2	B	8881164113	Legrest Support Tube Assembly, Lift Off, Color - Right	1	1
3			NLA - Plug Button (1")	1	1
4			Screw, Socket Button Head (1/4-20 x 1-3/4")	1	1
5			Tube, Legrest Support, Color - Right	1	1
6			Screw, Lug (5/16-24 x 1-3/8")	1	1
7			Plug, Insert (7/8")	1	1
8			Screw, Socket Button Head (1/4-28 x 1-1/4")	1	1
9			Pivot	1	1
10			Locknut (1/4-28)	1	1
11			Spacer (5/16 x 1/2 x 3/16")	1	1
12			Locknut, Nylon Cap (5/16-24)	1	1
13			Screw, Socket Button Head (1/4-20 x 1-1/2")	1	1
14			Locknut (1/4-20)	1	1
15			Latch Assembly, Black - Right	1	1
16			Pivot, Footrest	1	1
2	B	8881164114	Legrest Support Tube Assembly, Lift Off, Color - Left	1	1
3			NLA - Plug Button (1")	1	1
4			Screw, Socket Button Head (1/4-20 x 1-3/4")	1	1
5			Tube, Legrest Support, Color - Left	1	1
6			Screw, Lug (5/16-24 x 1-3/8")	1	1
7			Plug, Insert (7/8")	1	1
8			Screw, Socket Button Head (1/4-28 x 1-1/4")	1	1
9			Pivot	1	1
10			Locknut (1/4-28)	1	1
11			Spacer (5/16 x 1/2 x 3/16")	1	1
12			Locknut, Nylon Cap (5/16-24)	1	1
13			Screw, Socket Button Head (1/4-20 x 1-1/2")	1	1
14			Locknut (1/4-20)	1	1
15			Latch Assembly, Black - Left	1	1
16			Pivot, Footrest	1	1
17	C	1164117	Kit, Pivot Rod Assembly - Right	1	1
18			Locknut (1/4-28)	1	2
19			Lever, Release - Right	1	1
20			Rod, Pivot	1	1
21			Screw, Socket Button Head (1/4-28 x 1-1/4")	1	2
22			Rivnut, Phillips Pan Head (10-24 x 1")	1	1
23			Screw, Phillips Pan Head w/ Patch (10-24 x 3/8")	1	1
24			Guide, Pivot Rod	1	1
25			Pin, Roller	1	1
26			Spring, Torsion	1	1
27			Cap, Brake Lever End, Black	1	1

Lift Off Legrest Support Assembly (AT5044LIFT)

Specify frame color when ordering. Legrest Support does not include Legrest Pad.

Item Number	Note	Part Number	Description	Quantity Per	
				Package	Assembly
17	C	1164118	Kit, Pivot Rod Assembly - Left	1	1
18			Locknut (1/4-28)	1	2
19			Lever, Release - Left	1	1
20			Rod, Pivot	1	1
21			Screw, Socket Button Head (1/4-28 x 1-1/4")	1	2
22			Rivnut, Phillips Pan Head (10-24 x 1")	1	1
23			Screw, Phillips Pan Head w/ Patch (10-24 x 3/8")	1	1
24			Guide, Pivot Rod	1	1
25			Pin, Roller	1	1
26			Spring, Torsion	1	1
27			Cap, Brake Lever End, Black	1	1
28	D	8881164115	NLA - Kit, Elevating Support Tube, Color - Right	1	1
7			Plug, Insert (7/8")	1	1
29			Locknut, Nylon Cap (5/16-24)	1	1
30			Spacer (5/16 x 1/2 x 3/16")	1	1
31			Bolt, Lug (5/16-24 x 1-3/8")	1	1
32			Tube, Elevating Support, Color - Right	1	1
33			Rivnut, Phillips Pan Head (10-24 x 1")	1	1
34			Screw, Phillips Pan Head w/ Patch (10-24 x 3/8")	1	1
35			Washer (#20)	1	1
36			Locknut, Nylon Cap (5/16-24)	1	1
28	D	8881164116	NLA - Kit, Elevating Support Tube, Color - Left	1	1
7			Plug, Insert (7/8")	1	1
29			Locknut, Nylon Cap (5/16-24)	1	1
30			Spacer (5/16 x 1/2 x 3/16")	1	1
31			Bolt, Lug (5/16-24 x 1-3/8")	1	1
32			Tube, Elevating Support, Color - Left	1	1
33			Rivnut, Phillips Pan Head (10-24 x 1")	1	1
34			Screw, Phillips Pan Head w/ Patch (10-24 x 3/8")	1	1
35			Washer (#20)	1	1
36			Locknut, Nylon Cap (5/16-24)	1	1
37	E	1130754	Kit, Legrest Pad Hardware	1	1
38			T-Nut (1/4-20)	1	1
39			Plate, Legrest Pad	1	1
40			Locknut (5/16-18)	1	1
41			Spacer, Legrest Pad, Black	1	1
42			Bracket Assembly, Adjustable Legrest Pad, Color	1	1
43			NLA - Washer, Steel (1/4 x 1/2 x 3/64")	1	1
44			Screw, Hex Head w/ Patch (1/4-20 x 1/2")	1	1
45			Screw, Socket Flat Head (5/16-18 x 2-1/4")	1	1
46	F	1130753	Kit, Pivot Slide Tube Attaching Hardware	1	1
47			Screw, Lug (5/16-24 x 1-3/8")	1	1
48			Washer (11/32 x 53/64 x 1/8")	1	1
49			Locknut, Nylon Cap (5/16-24)	1	1

Lift Off Legrest Support Assembly (AT5044LIFT)

Specify frame color when ordering. Legrest Support does not include Legrest Pad.

NOTE: A - Includes items 2, 17, 28 and 37. Specify frame color when ordering this item.
B - Includes items 3 thru 16. Specify frame color when ordering this item.
C - Includes items 18 thru 27.
D - Includes items 7 and 29 thru 37. Specify frame color when ordering this item.
E - Includes items 39 thru 45.
F - Includes items 47 thru 49.