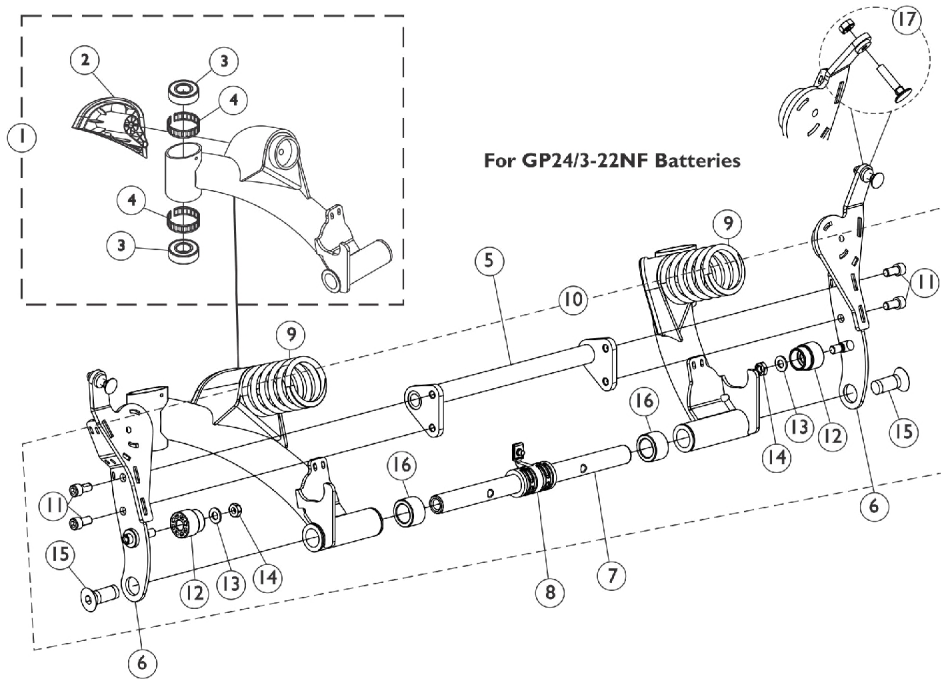
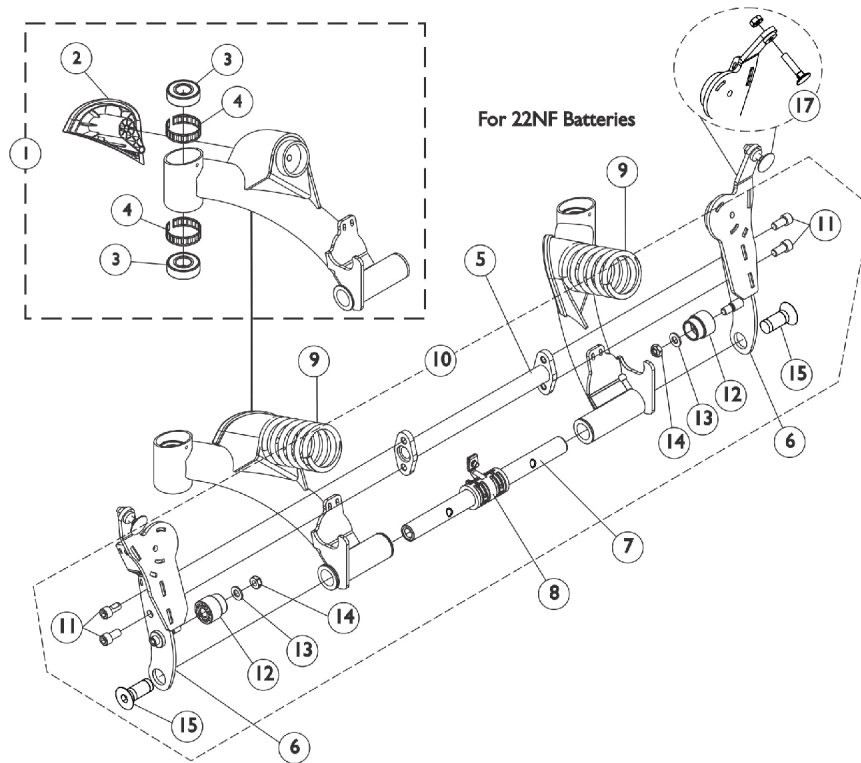


Rear Pivot Assembly - Before 9/7/07 (For 22NF & GP24/3-22NF Batteries)



Rear Pivot Assembly - Before 9/7/07 (For 22NF & GP24/3-22NF Batteries)

Item Number	Note	Part Number	Description	Quantity Per	
				Package	Assembly
1	A,I,J,J1	8881142334-NL A	Kit, Swing Arm w/ Cap and Bearings, Color, Rear - Right	1	1
2			Cap, Rear, Black - Right	1	1
3			Bearing (5/8")	1	2
4			Ring, Tolerance	1	2
1	A,I,J,J1	8881142335-NL A	Kit, Swing Arm w/ Cap and Bearings, Color, Rear - Left	1	1
2			Cap, Rear, Black - Left	1	1
3			Bearing (5/8")	1	2
4			Ring, Tolerance	1	2
2		1142312	Cap, Rear, Black - Right	1	1
2		1142313	Cap, Rear, Black - Left	1	1
3		40117X006	Bearing (5/8")	1	2
4		1110717	Ring, Tolerance	1	2
5	E	1142287	Crossmember, Pivot, Black	1	1
5	F	1146643	Crossmember, Pivot, Black	1	1
6	I,J,J1	8881142344-NL A	NLA - Spring Bracket Assembly, Color - Right	1	1
6	I,J,J1	8881142345-NL A	NLA - Spring Bracket Assembly, Color - Left	1	1
7	E,J,J1	1142282-NLA	NLA - Bar, Pivot	1	1
7	F,J,J1	1146638-NLA	NLA - Bar, Pivot	1	1
8		1144672	Center Bushing Assembly	1	1
9	B,L	1113186	Spring, Light Yellow, Non-Heavy Duty	1	2
9	C,M	1113187	Spring, Sunny Yellow, Heavy Duty	1	2
9	H,N	1125645-NLA	NLA - Spring, Dark Yellow, EXTRA Heavy Duty	1	2
10	D	1145067	Kit, Pivot Assembly Hardware	1	1
11			Screw, Socket Head w/ Patch (5/16-18 x 5/8")	1	4
12			Stop, Nylon	1	2
13			NLA - Washer, Steel (5/16 x 5/8 x 1/16")	1	2
14			Locknut (5/16-18)	1	2
15			Screw, Socket Flat Head w/ Patch (1/2-13 x 1-1/4")	1	2
16			Spacer, Nylon (3/4" x 1-1/4" x 23/32")	1	2
17		1144595	Kit, Elevator Bolt w/ Keps Nut (1/4-20)	1	2
	I,J1,K	8881152028-NL A	NLA - Kit, Rear Pivot Assembly & Mtg. Hdw. Conversion (For 22NF Battery Box)	1	1
	I,J1,K	8881152029-NL A	NLA - Kit, Rear Pivot Assembly & Mtg. Hdw. Conversion (For GP24/3-22NF Battery Box)	1	1

Rear Pivot Assembly - Before 9/7/07 **(For 22NF & GP24/3-22NF Batteries)**

NOTE: A - Includes Swing Arm and items 2-4
B - Used for ALL 300 Lb. user weight models with Non-Power Seating.
C - Used for 301-400 Lb. user weight models with Non-Power Seating or ALL user weight models with Power Seating that excludes the Vent Tray option.
D - Includes items 11-16
E - Used for 22NF Batteries
F - Used for GP24/3-22NF Batteries
H - Used for ALL user weight models with Power Seating that includes the Vent Tray Option.
I - Specify frame color when ordering. See page titled "Frame Finishes and Touch-Up Paints."
J - Component is No Longer Available. Please refer to the Rear Pivot Assembly & Mtg. Hwr. Conversion Kit below. Kit includes both Rear Pivot Assembly & Rear Pivot Assembly Mounting Hardware dated After 9/6/07
J1 - Please refer to the TDX SP service manual for assembly instructions
K - Not Shown
L - Spring color changed from Sunny Yellow to Light Yellow 3/22/10. It is recommended to order springs in pairs to match color and maintain equal spring tension on both sides of the wheelchair
M - Spring color remains the same for this part number. It is recommended to order springs in pairs to maintain equal spring tension on both sides of the wheelchair
N - Spring color changed from Sunny Yellow to Dark Yellow 3/22/10. It is recommended to order springs in pairs to match color and maintain equal spring tension on both sides of the wheelchair