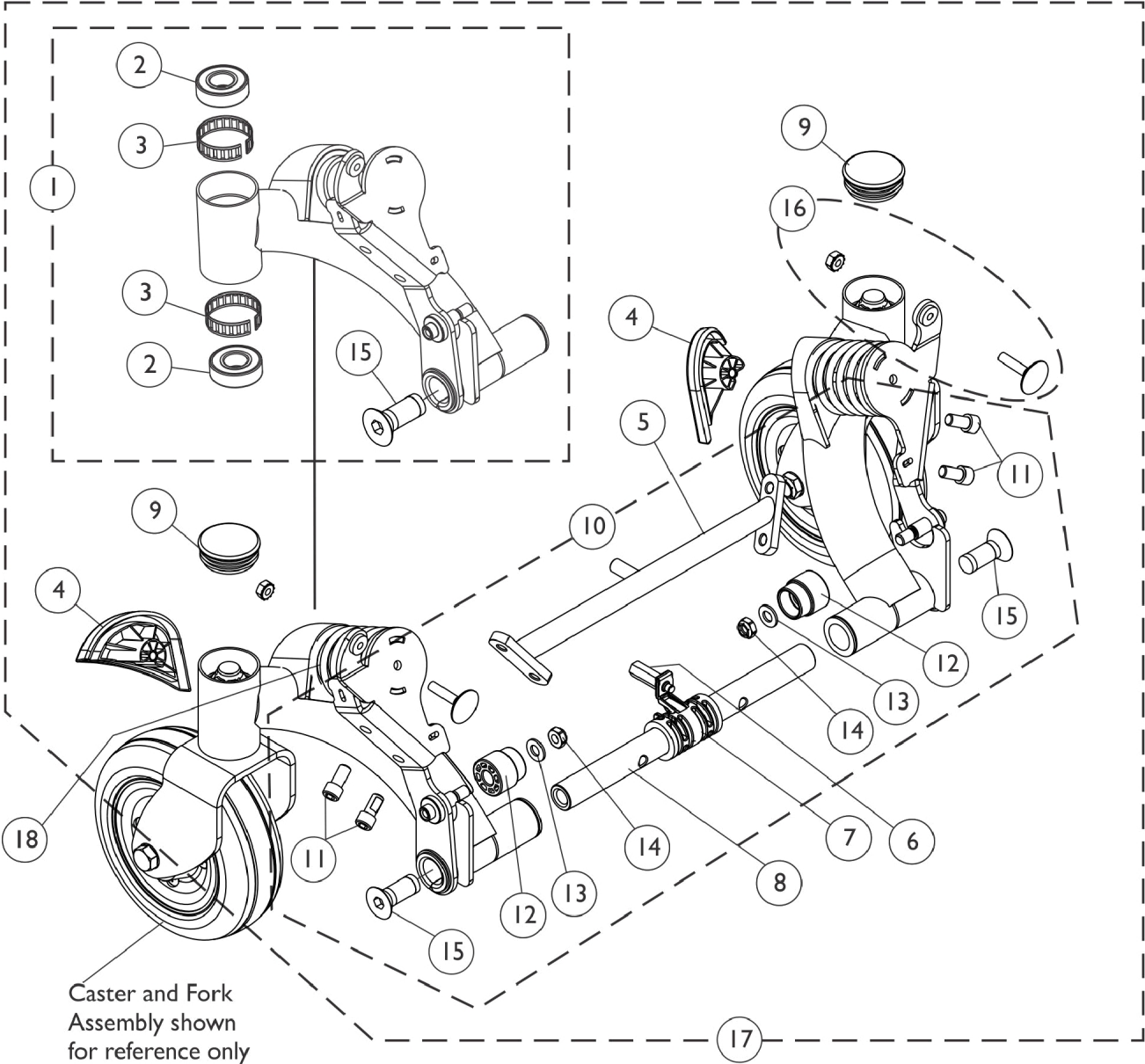


# Rear Pivot Assembly



## Rear Pivot Assembly

Item Number	Note	Part Number	Description	Quantity Per	
				Package	Assembly
1	A,B	8881166118	Swing Arm Assembly w/ Hardware, Color, Rear - Right	1	1
2			Bearing (5/8")	1	2
3			Ring, Tolerance	1	2
15			Screw, Socket Flat Head w/ Patch (1/2-13 x 1-1/4")	1	1
1	A,B	8881166119	Swing Arm Assembly w/ Hardware, Color, Rear - Left	1	1
2			Bearing (5/8")	1	2
3			Ring, Tolerance	1	2
15			Screw, Socket Flat Head w/ Patch (1/2-13 x 1-1/4")	1	1
2		40117X006	Bearing (5/8")	1	2
3		1110717	Ring, Tolerance	1	2
4		1150988	Cap, Rear, Black - Right	1	1
4		1150989	Cap, Rear, Black - Left	1	1
5		1149595-NLA	NLA - Crossmember, Pivot, Black	1	1
6		1151617-NLA	NLA - Stand-Off (10-32 x 1")	1	1
7		1144672	Center Bushing Assembly	1	1
8		1149238-NLA	NLA - Bar, Pivot	1	1
8		1155019	Bar, Pivot	1	1
9		1110709	Cap, Head Tube, Black	1	2
10	C	1145067	Kit, Pivot Assembly Hardware	1	1
11			Screw, Socket Head w/ Patch (5/16-18 x 5/8")	1	4
12			Stop, Nylon	1	2
13			NLA - Washer, Steel (5/16 x 5/8 x 1/16")	1	2
14			Locknut (5/16-18)	1	2
15			Screw, Socket Flat Head w/ Patch (1/2-13 x 1-1/4")	1	2
			Spacer, Nylon (3/4" x 1-1/4" x 23/32")	1	2
16		1151949	Kit, Elevator Bolt w/ Keps Nut (1/4-20)	1	2
17	D,B	8881149284-NL A	NLA - Kit, Rear Pivot Assembly (Color) (For TDX SC/Spree)	1	1
18	E	1151586-NLA	NLA - Spring, Yellow, Heavy Duty	1	2
18	F	1151587-NLA	NLA - Spring, Yellow, Non-Heavy Duty	1	2

NOTE: A - Includes Swing Arm and items 2,3 and 15  
 B - Specify frame color when ordering. See page titled "Frame Finishes and Touch-Up Paints."  
 C - Includes items 11-15 and (part # 1146631 Nylon Spacers - Not Shown. These spacers are used for TDX SP models only. Disregard for TDX SC and SPREE models).  
 D - Includes items 1, 4-10 and 16  
 E - Used for all TDX SC models and TDX SPREE with Formula CG Tilt  
 F - Used for all TDX SPREE models except TDX SPREE with Formula CG Tilt