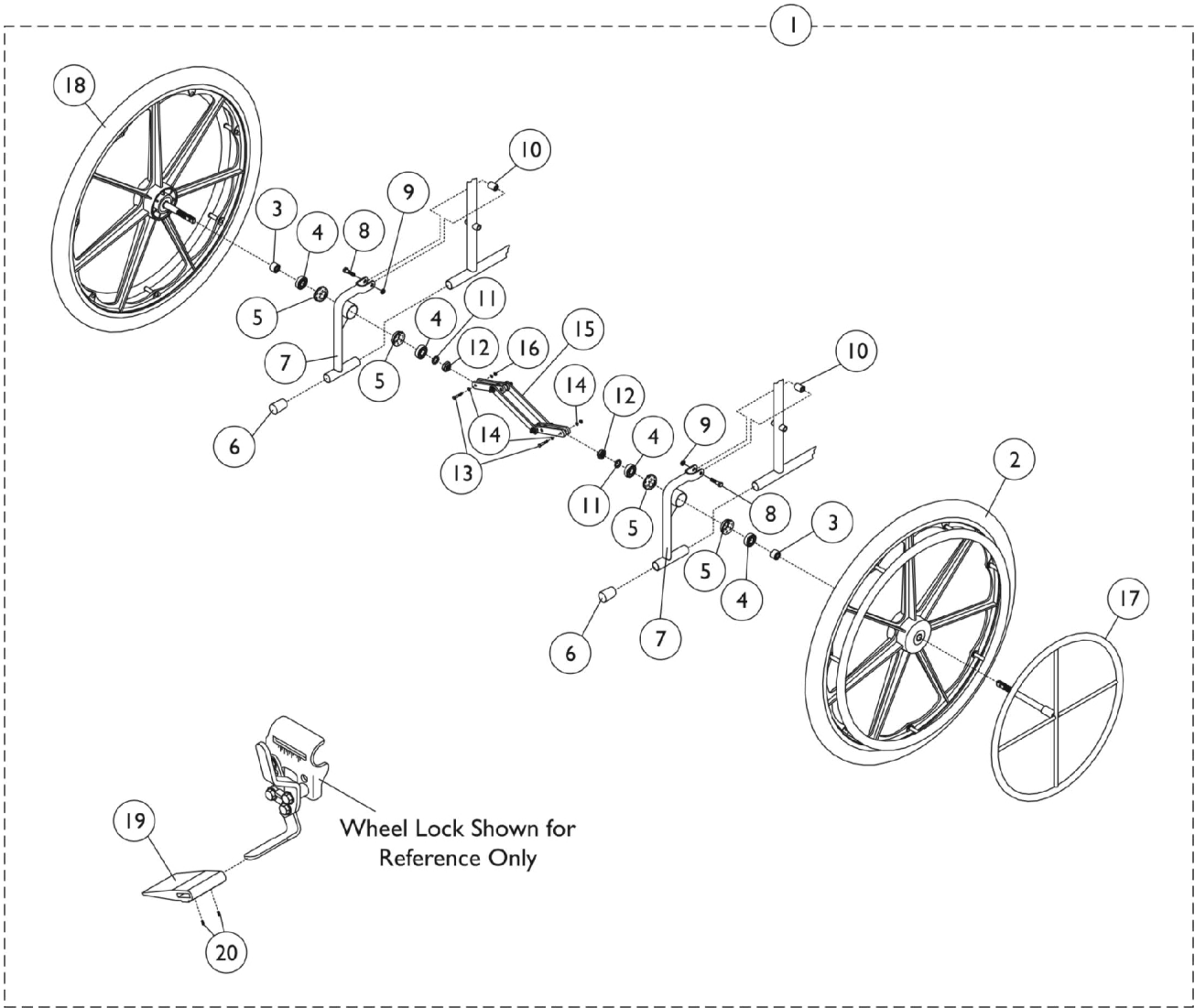


# One Arm Drive - EX



## One Arm Drive - EX

Item Number	Note	Part Number	Description	Quantity Per	
				Package	Assembly
1	A	See Chart	One Arm Drive Assembly - "Box" Style Frame, Permanent Arm	1	1
1	A	See Chart	One Arm Drive Assembly - "Box" Style Frame, Removable Arm	1	1
1	A	See Chart	One Arm Drive Assembly - "S" Style Frame, Permanent Arm	1	1
1	A	See Chart	One Arm Drive Assembly - "S" Style Frame, Removable Arm	1	1
2		1016420	Wheel Assembly w/ Clear Anodized Handrim, Composite, Pneumatic Mag (24")	1	1
2		1036190	Wheel Assembly w/ Clear Anodized Handrim, Composite, Pneumatic Mag w/ Flat Free Insert (24")	1	1
2	G	1091816	Wheel Assembly w/ Clear Anodized Handrim, Composite, Corded Urethane (24")	1	1
3		47183X018	Spacer (5/8 x 7/8 x 1/2")	1	2
4		40117X006	Bearing (5/8")	1	4
5		57769X000-NLA	NLA - Cup, Bearing	1	2
6		1016346	Cap, End, Tube, Black (7/8")	1	2
7	B	04604X030-NLA	NLA - Bracket, Chrome	1	2
7	C	1083122-NLA	NLA - Bracket Assembly, Chrome	1	2
8		11232X009	Bolt, Lug (5/16-24 x 1-3/8")	1	2
9		48323X013	Washer (5/8 x 7/8 x 1/8")	1	2
10		47324X011	Bushing, Pivot (5/16 x 7/8 x 3/4")	1	2
11		1107321	Nut, Low Cap (5/16"-24)	1	2
12		60030X000	Locknut (5/8-18)	1	2
13		1019101	Screw, Hex Head (1/4-28 x 1-1/2")	1	2
14		40157X000	Washer, Steel (11/32 x 5/8 x 3/64")	1	4
15		1019104	Scissor Assembly (16 - 17" W)	1	1
15		1019106	Scissor Assembly (18 - 19" W)	1	1
15		1019103	Scissor Assembly (20 - 22" W)	1	1
16		60320X000	Locknut (1/4-28)	1	2
17	D	1020454	Handrim, Dual Drive	1	1
17	E	1020455	Handrim, Dual Drive	1	1
18	D	1025397-NLA	NLA - Wheel Assembly w/ Drive Axle, Composite, Pneumatic Mag (24")	1	1
18	D	1042075-NLA	NLA - Wheel Assembly w/ Drive Axle, Composite, Pneumatic Mag w/ Flat Free Insert (24")	1	1
18	D,G	1091817	Wheel Assembly w/ Drive Axle, Composite, Corded Urethane (24")	1	1
18	B	1108394	Wheel Assembly w/ Drive Axle, Composite, Urethane (24")	1	1
18	B	1085348-NLA	NLA - Wheel Assembly w/ Drive Axle, Composite, Urethane (24")	1	1
18	B	1036189-NLA	NLA - Wheel Assembly w/ Drive Axle, Composite, Pneumatic Mag w/ Flat Free Insert (24")	1	1
18	B	1025396-NLA	NLA - Wheel Assembly w/ Drive Axle, Composite, Pneumatic Mag (24")	1	1
19		1016979	Spacer, Wheel Lock Shoe (2-7/16")	1	1
20		1008438	Screw, Set Socket Cup Point (#8-32 x 3/16")	1	4

## One Arm Drive - EX

Item Number	Note	Part Number	Description	Quantity Per	
				Package	Assembly
	F,H	1023334-NLA	NLA - Instruction Sheet	1	1
NOTE: A - Includes items 2-20 and an instruction sheet. B - Used with "S" Style Frames. C - Used with "Box" Style Frames. D - Used on Removable Arms. E - Used on Permanent Arms. F - Not Shown. G - Non-Corded Tire replaced with a Corded Tire as of 11/16/09. It is recommended that both sides of the Wheel Assemblies be ordered for chairs manufactured before 11/16/09. H - Item is no longer available from the Invacare Service Parts Department. Refer to the Invacare Website under "Product Literature Search". Enter the part number in the "Keywords" field and download a free PDF version copy.					

### "Box" Style Frame - Permanent Arm

Wheel Type	16"	18"	20"
Pneumatic Tires T94RPP, T94LPP	1085369-NLA	1085370-NLA	N/A
Flat Free T94RPPF, T94LPPF	1085371-NLA	1085372-NLA	N/A
Urethane T94RPS, T94LPS	1085385-NLA	1085387-NLA	N/A

### "Box" Style Frame - Removable Arm

Wheel Type	16"	18"	20"
Pneumatic Tires T94RRP, T94LRP	1085373-NLA	1085374-NLA	1085377-NLA
Flat Free T94RRPF, T94LRPF	1085375-NLA	1085376-NLA	1085378-NLA
Urethane T94RRS, T94LRS	1085393-NLA	1085394-NLA	1085395-NLA

### "S" Style Frame - Permanent Arm

Wheel Type	16"	18"	20"
Pneumatic Tires 1455P and 1456P	1042100-NLA	1042101-NLA	N/A
Flat Free 1455PF and 1456PF	1042102-NLA	1042103-NLA	N/A

# One Arm Drive - EX

## "S" Style Frame - Removable Arm

Wheel Type	16"	18"	20"
Pneumatic Tires 1457P and 1458P	1042078-NLA	1042079-NLA	1047117
Flat Free	1042080-NLA	1042081-NLA	1047119