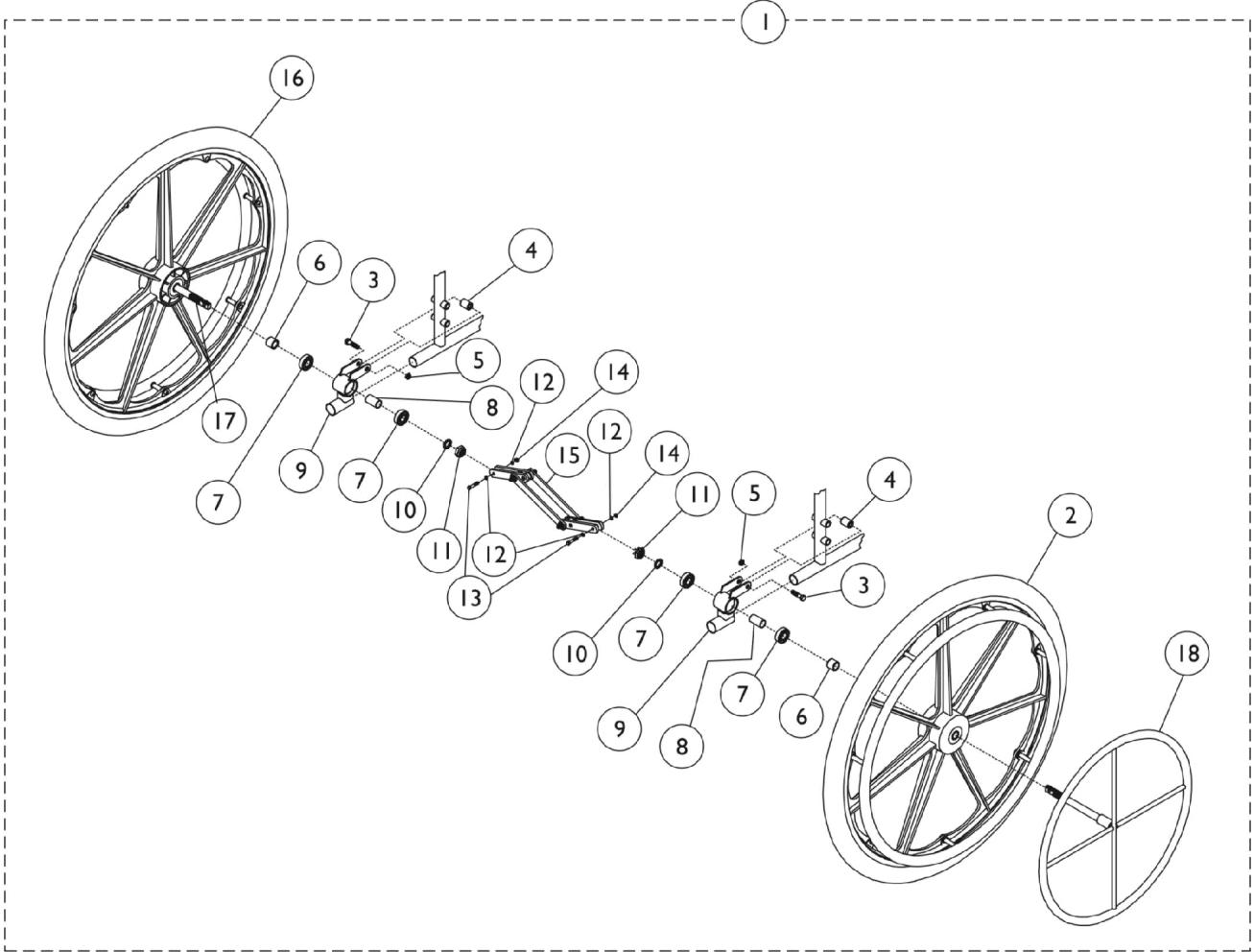
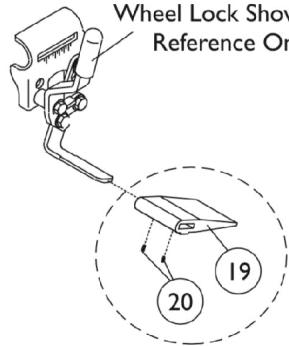


One Arm Drive - 9000XT, 9000XDT



Wheel Lock Shown for Reference Only



One Arm Drive - 9000XT, 9000XDT

Item Number	Note	Part Number	Description	Quantity Per	
				Package	Assembly
1	A	See Chart	9000XT/XDT Chairs - Adult	1	1
1	A	See Chart	9000XT/XDT Chairs - Hemi	1	1
1	A	See Chart	9000XT/XDT Chairs - Tall	1	1
2		1016420	Wheel Assembly w/ Clear Anodized Handrim, Composite, Pneumatic Mag (24")	1	1
2		1036190	Wheel Assembly w/ Clear Anodized Handrim, Composite, Pneumatic Mag w/ Flat Free Insert (24")	1	1
2	B	1065610-NLA	NLA - Wheel Assembly w/ Chrome Handrim, Composite, Urethane (24")	1	1
2	C	1080385-NLA	NLA - Wheel Assembly w/ Chrome Handrim, Composite, Urethane (24")	1	1
2	C,I	1091816	Wheel Assembly w/ Clear Anodized Handrim, Composite, Corded Urethane (24")	1	1
2	D	1066419	Wheel Assembly w/ Chrome Handrim, Composite, Pneumatic w/ Heavy Duty Flat Free Insert (24")	1	1
3		11239X001	Screw, Hex Head (5/16-24 x 1-1/2")	1	2
4		1017843-NLA	NLA - Spacer, Chrome (5/16 x 11/16 x 15/16")	1	2
5		1107321	Nut, Low Cap (5/16"-24)	1	2
6		47183X021	Spacer (5/8 x 7/8 x 3/4")	1	2
7		40117X006	Bearing (5/8")	1	4
8		1067747	Spacer, Bearing (5/8 x 3/4 x 1-3/64")	1	2
9	E	1058694	Bracket, One Arm Drive, Black	1	2
9	F	1058695	Bracket, One Arm Drive, Black	1	2
9	G	1065513-NLA	NLA - Bracket, One Arm Drive , Black	1	2
10		48323X013	Washer (5/8 x 7/8 x 1/8")	1	2
11		60030X000	Locknut (5/8-18)	1	2
12		40157X000	Washer, Steel (11/32 x 5/8 x 3/64")	1	4
13		1019101	Screw, Hex Head (1/4-28 x 1-1/2")	1	2
14		60320X000	Locknut (1/4-28)	1	2
15		1019105	Scissor Assembly (14 - 15" W)	1	1
15		1019104	Scissor Assembly (16 - 17" W)	1	1
15		1019106	Scissor Assembly (18 - 19" W)	1	1
15		1048655	Scissor Assembly (20" W)	1	1
15		1019103	Scissor Assembly (20 - 22" W)	1	1
16		1025397-NLA	NLA - Wheel Assembly w/ Drive Axle, Composite, Pneumatic Mag (24")	1	1
16		1042075-NLA	NLA - Wheel Assembly w/ Drive Axle, Composite, Pneumatic Mag w/ Flat Free Insert (24")	1	1
16	I	1091817	Wheel Assembly w/ Drive Axle, Composite, Corded Urethane (24")	1	1
16	D	1066418	Wheel Assembly w/ Drive Axle, Pneumatic w/ Heavy Duty Flat Free Insert (24")	1	1
17		1028609	Axle, Drive	1	1
18		1020454	Handrim, Dual Drive	1	1
19		1016980	Spacer, Wheel Lock Shoe (2-63/64")	1	1
20		1008438	Screw, Set Socket Cup Point (#8-32 x 3/16")	1	4
	H,J	1023334-NLA	NLA - Instruction Sheet	1	1

One Arm Drive - 9000XT, 9000XDT

NOTE: A - Includes items 2-18 and an instruction sheet.
 B - Before 11/20/98.
 C - After 11/19/98
 D - For use on 9000XDT chair.
 E - For use on 9000XDT Tall chairs and 9000XT Adult chairs with Pneumatic, Pneumatic with Flat Free Inserts and Urethane Tires.
 F - For use on 9000XDT Adult chairs with Pneumatic with Flat Free Inserts and Urethane Tires and 9000XT Hemi chairs with Pneumatic, Pneumatic with Flat Free Inserts and Urethane tires.
 G - For use on 9000XDT Hemi chairs with Pneumatic with Flat Free Inserts and Urethane Tires.
 H - Not shown.
 I - Non-Corded Tire replaced with a Corded Tire as of 11/16/09. It is recommended that both sides of the Wheel Assemblies be ordered for chairs manufactured before 11/16/09.
 J - Item is no longer available from the Invacare Service Parts Department. Refer to the Invacare Website under "Product Literature Search". Enter the part number in the "Keywords" field and download a free PDF version copy.

Adult

Chair Width	Side	Pneumatic Tires 9000XT	Pneumatic with Flat Free 9000XT	Pneumatic with Flat Free 9000XDT	Urethane Tires 9000XT	Urethane Tires 9000XDT
14-15"	Right	1058716-NLA	1058696	--	1099553	--
14-15"	Left	1058717-NLA	1058697	--	1099554	--
16-17"	Right	1058718-NLA	1058698	1066428	1099555	1099565
16-17"	Left	1058719-NLA	1058699	1066429	1099556	1099566
18-19"	Right	1058720-NLA	1058700	1066430	1099557	1099567
18-19"	Left	1058721-NLA	1058701	1066431	1099558	1099568
20"	Right	1058722-NLA	1058702	1066432	1099559	1099569
20"	Left	1058723-NLA	1058703	1066433	1099560	1099570
22"	Right	1058724-NLA	1058704	1066434	1099561	1099571
22"	Left	1058725-NLA	1058705	1066435	1099562	1099572

One Arm Drive - 9000XT, 9000XDT

Hemi

Chair Width	Side	Pneumatic Tires 9000XT	Pneumatic with Flat Free 9000XT	Pneumatic with Flat Free 9000XDT	Urethane Tires 9000XT	Urethane Tires 9000XDT
14-15"	Right	1058726-NLA	1058706	--	1099563	--
14-15"	Left	1058727-NLA	1058707	--	1099564	--
16-17"	Right	1058728-NLA	1058708	1065516	1099565	1065559
16-17"	Left	1058729-NLA	1058709	1065517	1099566	1065560
18-19"	Right	1058730-NLA	1058710	1065520	1099567	1065561
18-19"	Left	1058731-NLA	1058711	1065521	1099568	1065562
20"	Right	1058732-NLA	1058712	1065524	1099569	1065563
20"	Left	1058733-NLA	1058713	1065525	1099570	1065564
22"	Right	1058734-NLA	1058714	1065528	1099571	1065565
22"	Left	1058735-NLA	1058715	1065529	1099572	1065566

Tall

Chair Width	Side	Pneumatic with Flat Free 9000XDT	Urethane Tires 9000XDT
16-17"	Right	1066420	1099555
16-17"	Left	1066421	1099556
18-19"	Right	1066422	1099557
18-19"	Left	1066423	1099558
20"	Right	1066424	1099559
20"	Left	1066425	1099560
22"	Right	1066426	1099561
22"	Left	1066427	1099562