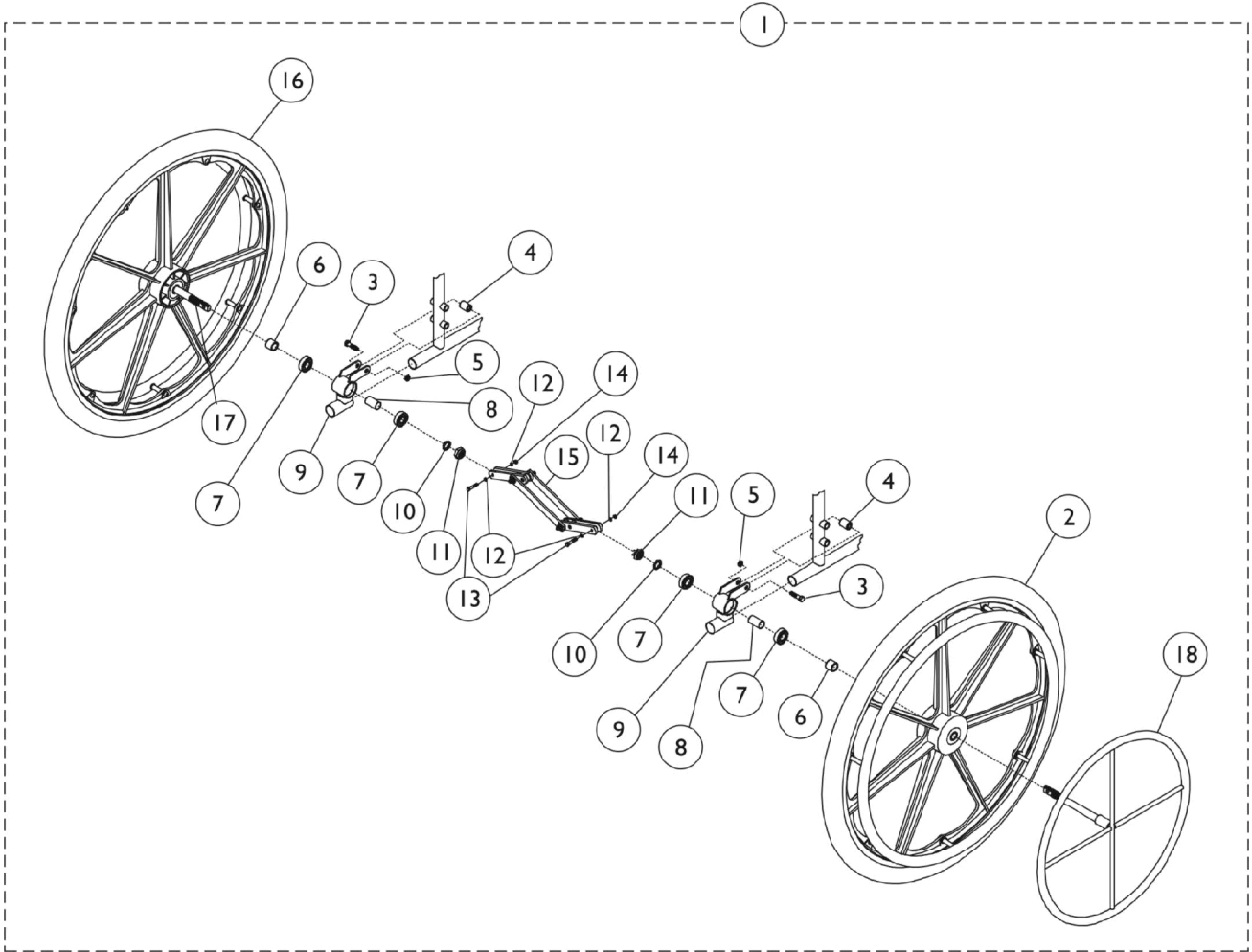
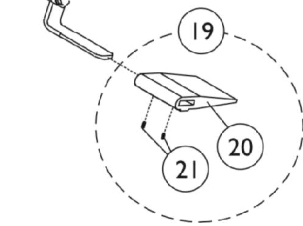


# One Arm Drive For SX5 Non-Recliner Only



Wheel Lock Shown for  
Reference Only



## One Arm Drive For SX5 Non-Recliner Only

Item Number	Note	Part Number	Description	Quantity Per	
				Package	Assembly
1	A	See Chart	One Arm Drive	1	1
2		1016420	Wheel Assembly w/ Clear Anodized Handrim, Composite, Pneumatic Mag (24")	1	1
2		1036190	Wheel Assembly w/ Clear Anodized Handrim, Composite, Pneumatic Mag w/ Flat Free Insert (24")	1	1
2		1080385-NLA	NLA - Wheel Assembly w/ Chrome Handrim, Composite, Urethane (24")	1	1
2	H	1091816	Wheel Assembly w/ Clear Anodized Handrim, Composite, Corded Urethane (24")	1	1
3		11239X001	Screw, Hex Head (5/16-24 x 1-1/2")	1	4
4		1017843-NLA	NLA - Spacer, Chrome (5/16 x 11/16 x 15/16")	1	2
5		60264X001	Locknut (5/16-24)	1	2
6		47183X021	Spacer (5/8 x 7/8 x 3/4")	1	1
7		40117X006	Bearing (5/8")	1	4
8		1067747	Spacer, Bearing (5/8 x 3/4 x 1-3/64")	1	2
9	B	1058694	Bracket, One Arm Drive, Black	1	2
9	C	1058695	Bracket, One Arm Drive, Black	1	2
10		48323X013	Washer (5/8 x 7/8 x 1/8")	1	2
11		60030X000	Locknut (5/8-18)	1	2
12		40157X000	Washer, Steel (11/32 x 5/8 x 3/64")	1	4
13		1019101	Screw, Hex Head (1/4-28 x 1-1/2")	1	2
14		60320X000	Locknut (1/4-28)	1	2
15		1019105	Scissor Assembly (14 - 15" W)	1	1
15		1019104	Scissor Assembly (16 - 17" W)	1	1
15		1019106	Scissor Assembly (18 - 19" W)	1	1
15		1048655	Scissor Assembly (20" W)	1	1
15		1019103	Scissor Assembly (20 - 22" W)	1	1
16		1025397-NLA	NLA - Wheel Assembly w/ Drive Axle, Composite, Pneumatic Mag (24")	1	1
16		1042075-NLA	NLA - Wheel Assembly w/ Drive Axle, Composite, Pneumatic Mag w/ Flat Free Insert (24")	1	1
16	H	1091817	Wheel Assembly w/ Drive Axle, Composite, Corded Urethane (24")	1	1
17		1028609	Axle, Drive	1	1
18	D	1020454	Handrim, Dual Drive	1	1
18	E	1020455	Handrim, Dual Drive	1	1
19	F	1048656	Kit, Wheel Lock Shoe Spacer	1	2
20			Spacer, Wheel Lock Shoe (1-45/64")	1	1
21			Screw, Set Socket Cup Point (#8-32 x 3/16")	1	2
	G,I	1023334-NLA	NLA - Instruction Sheet	1	1

## One Arm Drive For SX5 Non-Recliner Only

NOTE: A - Includes items 2-18 and instruction sheet.  
B - For use with Adult style wheelchairs.  
C - For use with Hemi style wheelchairs.  
D - For use on removable style arms.  
E - For use on permanent style arms.  
F - Includes items 20 and 21.  
G - Not Shown.  
H - Non-Corded Tire replaced with a Corded Tire as of 11/16/09. It is recommended that both sides of the Wheel Assemblies be ordered for chairs manufactured before 11/16/09.  
I - Item is no longer available from the Invacare Service Parts Department. Refer to the Invacare Website under "Product Literature Search". Enter the part number in the "Keywords" field and download a free PDF version copy.

# One Arm Drive For SX5 Non-Recliner Only

## One Arm Drive

Chair Width	Seat to Floor	Pneumatic with Flat Free Insert -Right	Pneumatic with Flat Free Insert -Left	Urethane Tires -Right	Urethane Tires -Left
14"	Adult	1058696	1058697	1099553	1099554
	Hemi	1058706	1058707	1099563	1099564
16"	Adult	1058698	1058699	1099555	1099556
	Hemi	1058708	1058709	1099565	1099566
18"	Adult	1058700	1058701	1099557	1099558
	Hemi	1058710	1058711	1099567	1099568
20"	Adult	1058702	1058703	1099559	1099560
	Hemi	1058712	1058713	1099569	1099570
22"	Adult	1058704	1058705	1099561	1099562
	Hemi	1058714	1058715	1099571	1099572

NOTE: Right or left side refers to the side of chair the drive handrim is on.