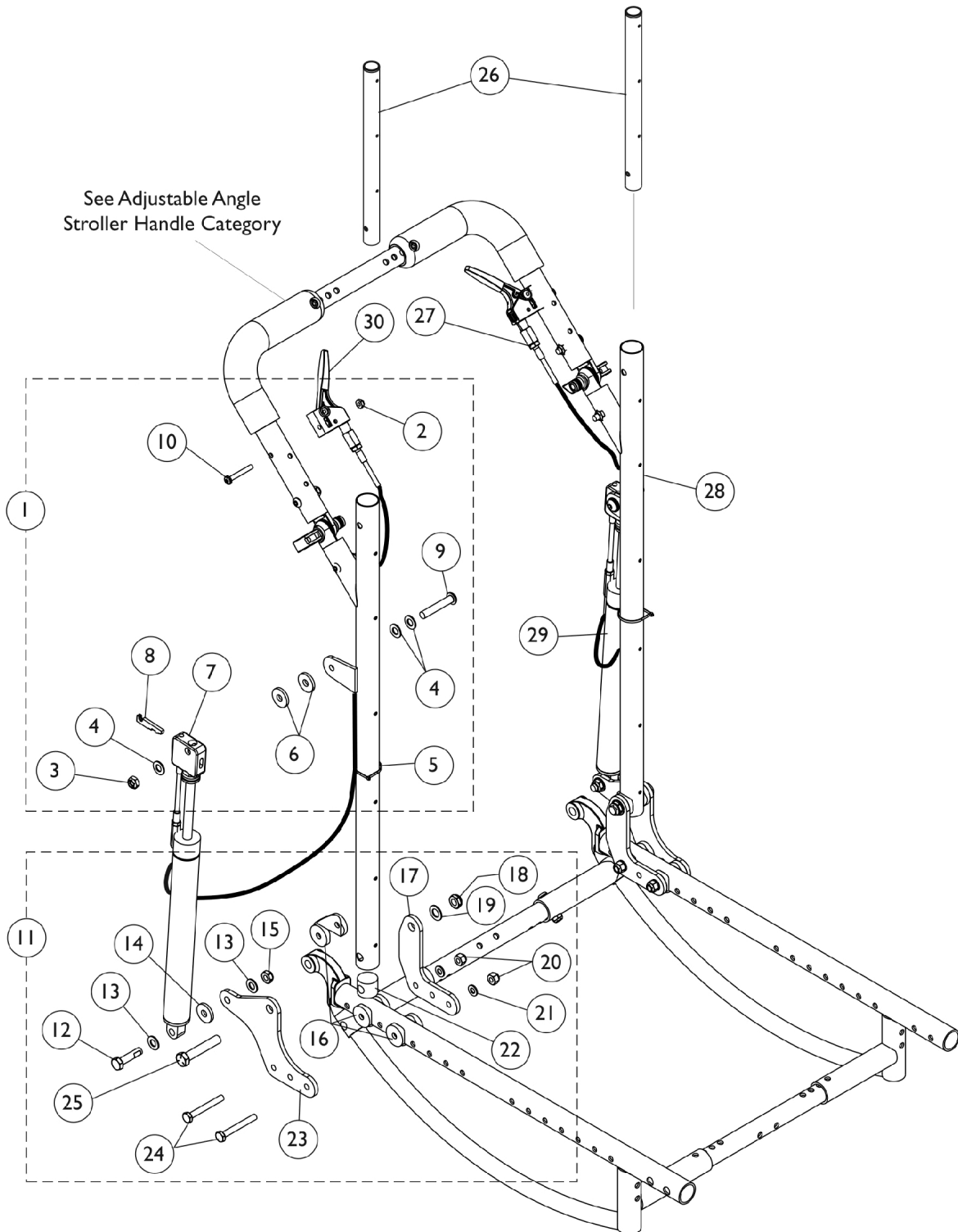


# Reclining Back Hardware



## Reclining Back Hardware

Item Number	Note	Part Number	Description	Quantity Per	
				Package	Assembly
1	A	1127697	Kit, Cable Release Hardware	1	1
2			Locknut (#10-32)	1	1
3			Locknut (5/16-24)	1	1
4			Washer, Steel (21/64 x 5/8 x 3/64")	1	3
5			Tie Wrap (3-29/32" L)	1	1
6			Washer, Nylon (5/16 x 7/8 x 1/8")	1	2
7			Bracket, Cylinder Release, Black	1	1
8			Lever, Cylinder Release	1	1
9			NLA - Screw, Socket Button Head (5/16-24 x 1-3/4")	1	1
10			Screw, Phillips Pan Head (#10-32 x 1-3/8")	1	1
11	B	1127698-NLA	NLA - Kit, Reclining Back Hardware	1	1
12			NLA - Screw, Hex Head (5/16-18 x 1-1/4")	1	1
13			Washer, Steel (21/64 x 5/8 x 3/64")	1	2
14			Washer, Nylon (5/16 x 7/8 x 1/8")	1	1
15			Locknut (5/16-18)	1	1
16			Uni-Washer, Coved	1	3
17			NLA - Plate, Reclining Back Cane Mounting - Inside	1	1
18			Locknut, Low Profile (3/8-16)	1	1
19			Washer, Flat (3/8 x 11/16 x 1/16")	1	1
20			Locknut (1/4-28)	1	2
21			Washer (1/4 x 1/2 x 1/16")	1	2
22			Plug	1	1
23			NLA - Plate, Reclining Back Cane Mounting - Outside	1	1
24			Screw, Hex Head (1/4-28 x 2")	1	2
25			NLA - Screw, Hex Head (3/8-16 x 2")	1	1
26	C	1070998	Headrest Extension Tube Assembly, Black - Right	1	1
26	C	1070999	Headrest Extension Tube Assembly, Black - Left	1	1
27		1082638	Cable Release Assembly	1	2
28	D	1127787-NLA	NLA - Cane, Back, Recliner, Black - Right	1	1
28	D	1127788-NLA	NLA - Cane, Back, Recliner, Black - Left	1	1
29		1050154	Cylinder, Lock, Recline	1	2
30		1078318	Handle, Cable Release, Black	1	2

NOTE: A - Includes items 2-10. The kit accommodates one side only. Hardware revised 10/16/2009 and is backward compatible with chairs manufactured before 10/16/2009.  
 B - Includes items 12-25. The hardware kit accommodates one side only.  
 C - Includes Plug Button and Spring Button.  
 D - When a new Recliner Back Cane is ordered for chairs manufactured before 10/16/2009, new Cable Release Hardware item #1 is recommended also. Recliner Back Canes do not have to be replaced in pairs.