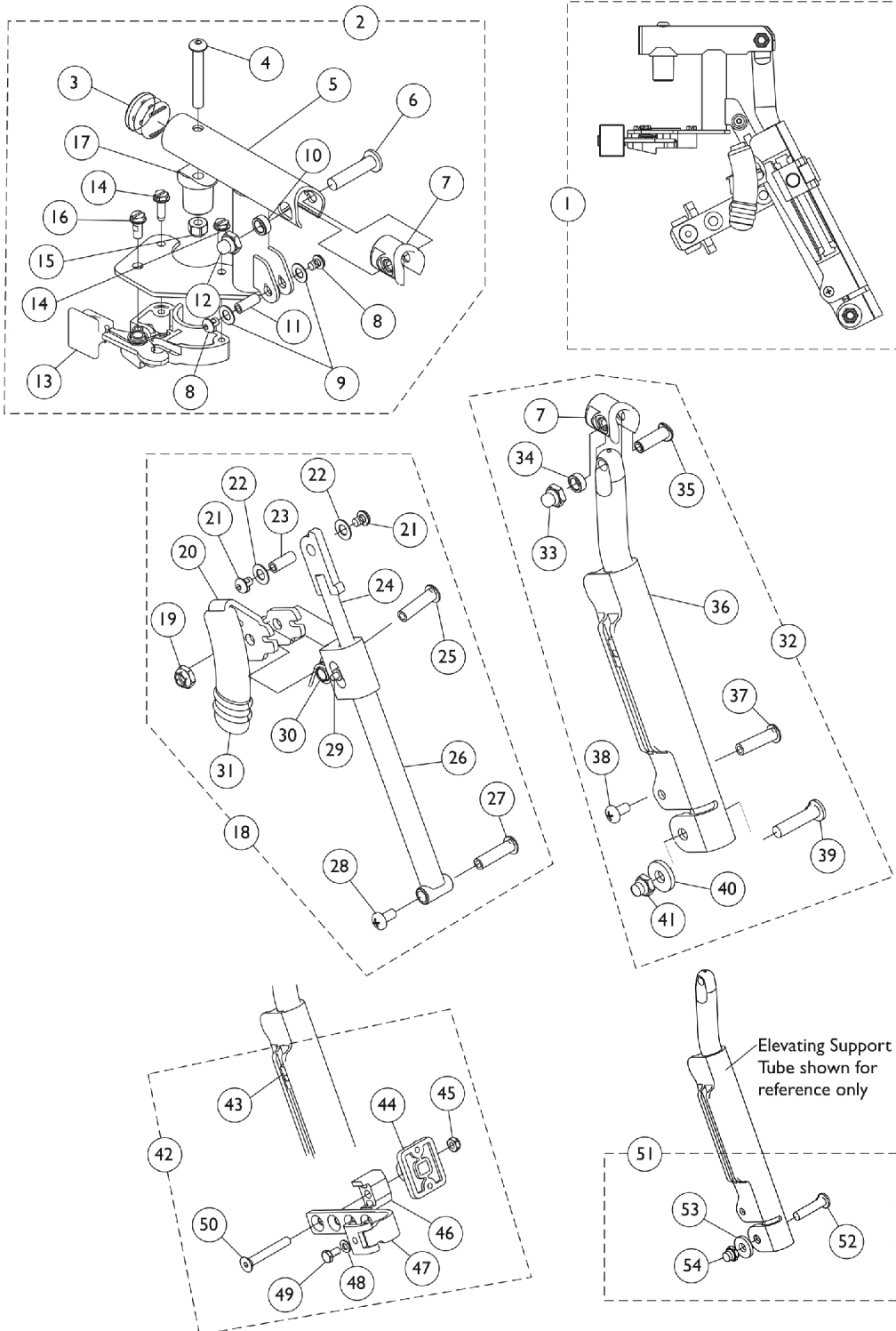


Legrest Support Assembly - AT5044

Wedge Style ("D" shaped tubing) Introduced 9/21/05

Specify frame finish when ordering. Legrest Support does not include Legrest Pad.



Legrest Support Assembly - AT5044

Wedge Style ("D" shaped tubing) Introduced 9/21/05

Specify frame finish when ordering. Legrest Support does not include Legrest Pad.

| Item Number | Note | Part Number | Description | Quantity Per | |
|-------------|------|-------------|---|--------------|----------|
| | | | | Package | Assembly |
| 1 | A,G | 8881128698 | Legrest Support Assembly, Sector, Color - Right | 1 | 1 |
| 1 | A,G | 8881128699 | Legrest Support Assembly, Sector, Color - Left | 1 | 1 |
| 2 | B,G | 8881130747 | Legrest Support Tube Assembly, Sector, Color - Right | 1 | 1 |
| 3 | | | Plug Button, Black (1") | 1 | 1 |
| 4 | | | Screw, Socket Button Head (1/4-20 x 1-3/4") | 1 | 1 |
| 5 | | | Tube, Legrest Support, Sector, Color - Right | 1 | 1 |
| 6 | | | Bolt, Lug (5/16-24 x 1-3/8") | 1 | 1 |
| 7 | | | Plug, Insert (7/8") | 1 | 1 |
| 8 | | | Screw, Socket Button Head w/ Patch (#10-32 x 1/4") | 1 | 2 |
| 9 | | | Washer (1/4 x 1/2 x 1/32") | 1 | 2 |
| 10 | | | Spacer (5/16 x 1/2 x 3/16") | 1 | 1 |
| 11 | | | Spacer, Threaded (10-32 x 1/4 x 5/8") | 1 | 1 |
| 12 | | | Nut, Low Cap (5/16"-24) | 1 | 1 |
| 13 | | | Housing, Latch - Right | 1 | 1 |
| 14 | | | Screw, Slotted Hex Washer Head (#10-32 x 5/8") | 1 | 2 |
| 15 | | | Locknut (1/4-20) | 1 | 1 |
| 16 | | | Screw, Slotted Hex Washer Head w/ Patch (#10-32 x 1/2") | 1 | 1 |
| 17 | | | Pivot, Footrest | 1 | 1 |
| 3 | | 1140823 | Package, Plug Button, Black (1") | 10 | 1 |
| 2 | B,G | 8881130748 | Legrest Support Tube Assembly, Sector, Color - Left | 1 | 1 |
| 3 | | | Plug Button, Black (1") | 1 | 1 |
| 4 | | | Screw, Socket Button Head (1/4-20 x 1-3/4") | 1 | 1 |
| 5 | | | Tube, Legrest Support, Sector, Color - Left | 1 | 1 |
| 6 | | | Bolt, Lug (5/16-24 x 1-3/8") | 1 | 1 |
| 7 | | | Plug, Insert (7/8") | 1 | 1 |
| 8 | | | Screw, Socket Button Head w/ Patch (#10-32 x 1/4") | 1 | 2 |
| 9 | | | Washer (1/4 x 1/2 x 1/32") | 1 | 2 |
| 10 | | | Spacer (5/16 x 1/2 x 3/16") | 1 | 1 |
| 11 | | | Spacer, Threaded (10-32 x 1/4 x 5/8") | 1 | 1 |
| 12 | | | Nut, Low Cap (5/16"-24) | 1 | 1 |
| 13 | | | Housing, Latch - Left | 1 | 1 |
| 14 | | | Screw, Slotted Hex Washer Head (#10-32 x 5/8") | 1 | 2 |
| 15 | | | Locknut (1/4-20) | 1 | 1 |
| 16 | | | Screw, Slotted Hex Washer Head w/ Patch (#10-32 x 1/2") | 1 | 1 |
| 17 | | | Pivot, Footrest | 1 | 1 |
| 3 | | 1140823 | Package, Plug Button, Black (1") | 10 | 1 |
| 18 | C | 1130749 | Kit, Pivot Rod Assembly - Right | 1 | 1 |
| 19 | | | Locknut (1/4-20) | 1 | 1 |
| 20 | | | Lever, Release - Right | 1 | 1 |

Legrest Support Assembly - AT5044

Wedge Style ("D" shaped tubing) Introduced 9/21/05

Specify frame finish when ordering. Legrest Support does not include Legrest Pad.

| Item Number | Note | Part Number | Description | Quantity Per | |
|-------------|------|--------------------|--|--------------|----------|
| | | | | Package | Assembly |
| 21 | | | Screw, Socket Button Head w/ Patch (#10-32 x 1/4") | 1 | 2 |
| 22 | | | Washer (1/4 x 1/2 x 1/32") | 1 | 2 |
| 23 | | | Spacer, Threaded (10-32 x 1/4 x 5/8") | 1 | 1 |
| 24 | | | Rod, Pivot | 1 | 1 |
| 25 | | | NLA - Screw, Socket Button Head (1/4-20 x 1-1/4") | 1 | 1 |
| 26 | | | Guide, Pivot Rod | 1 | 1 |
| 27 | | | Rivnut (10-32 x 1") | 1 | 1 |
| 28 | | | NLA - Screw, Phillips Pan Head w/Patch (#10-24 x 3/8") | 1 | 1 |
| 29 | | | Pin, Roller | 1 | 1 |
| 30 | | | Spring, Torsion | 1 | 1 |
| 31 | | | Cap, Brake Lever End, Black | 1 | 1 |
| 31 | | 1130584 | Package, Cap, Brake Lever End, Black | 10 | 1 |
| 18 | C | 1130750 | Kit, Pivot Rod Assembly - Left | 1 | 1 |
| 19 | | | Locknut (1/4-20) | 1 | 1 |
| 20 | | | Lever, Release - Left | 1 | 1 |
| 21 | | | Screw, Socket Button Head w/ Patch (#10-32 x 1/4") | 1 | 2 |
| 22 | | | Washer (1/4 x 1/2 x 1/32") | 1 | 2 |
| 23 | | | Spacer, Threaded (10-32 x 1/4 x 5/8") | 1 | 1 |
| 24 | | | Rod, Pivot | 1 | 1 |
| 25 | | | NLA - Screw, Socket Button Head (1/4-20 x 1-1/4") | 1 | 1 |
| 26 | | | Guide, Pivot Rod | 1 | 1 |
| 27 | | | Rivnut (10-32 x 1") | 1 | 1 |
| 28 | | | NLA - Screw, Phillips Pan Head w/Patch (#10-24 x 3/8") | 1 | 1 |
| 29 | | | Pin, Roller | 1 | 1 |
| 30 | | | Spring, Torsion | 1 | 1 |
| 31 | | | Cap, Brake Lever End, Black | 1 | 1 |
| 31 | | 1130584 | Package, Cap, Brake Lever End, Black | 10 | 1 |
| 32 | D,G | 8881164115-NL A | NLA - Kit, Elevating Support Tube, Color - Right | 1 | 1 |
| 7 | | | Plug, Insert (7/8") | 1 | 1 |
| 33 | | | Locknut, Nylon Cap (5/16-24) | 1 | 1 |
| 34 | | | Spacer (5/16 x 1/2 x 3/16") | 1 | 1 |
| 35 | | | Screw, Lug (5/16-24 x 1-3/8") | 1 | 1 |
| 36 | | | Tube, Elevating Support, Color - Right | 1 | 1 |
| 37 | | | Rivnut, Phillips Pan Head (10-24 x 1") | 1 | 1 |
| 38 | | | Screw, Phillips Pan Head w/ Patch (10-24 x 3/8") | 1 | 1 |
| 39 | | | Screw, Lug (5/16-24 x 1-3/8") | 1 | 1 |
| 40 | | | Washer (11/32 x 53/64 x 1/8") | 1 | 1 |
| 41 | | | Locknut, Nylon Cap (5/16-24) | 1 | 1 |
| 32 | D,G | 8881164116-NL A | NLA - Kit, Elevating Support Tube, Color - Left | 1 | 1 |
| 7 | | | Plug, Insert (7/8") | 1 | 1 |

Legrest Support Assembly - AT5044

Wedge Style ("D" shaped tubing) Introduced 9/21/05

Specify frame finish when ordering. Legrest Support does not include Legrest Pad.

| Item Number | Note | Part Number | Description | Quantity Per | |
|-------------|------|-------------|---|--------------|----------|
| | | | | Package | Assembly |
| 33 | | | Locknut, Nylon Cap (5/16-24) | 1 | 1 |
| 34 | | | Spacer (5/16 x 1/2 x 3/16") | 1 | 1 |
| 35 | | | Screw, Lug (5/16-24 x 1-3/8") | 1 | 1 |
| 36 | | | Tube, Elevating Support, Color - Left | 1 | 1 |
| 37 | | | Rivnut, Phillips Pan Head (10-24 x 1") | 1 | 1 |
| 38 | | | Screw, Phillips Pan Head w/ Patch (10-24 x 3/8") | 1 | 1 |
| 39 | | | Screw, Lug (5/16-24 x 1-3/8") | 1 | 1 |
| 40 | | | Washer (11/32 x 53/64 x 1/8") | 1 | 1 |
| 41 | | | Locknut, Nylon Cap (5/16-24) | 1 | 1 |
| 42 | F | 1130754 | Kit, Legrest Pad Hardware | 1 | 1 |
| 43 | | | T-Nut (1/4-20) | 1 | 1 |
| 44 | | | Plate, Legrest Pad | 1 | 1 |
| 45 | | | Locknut (5/16-18) | 1 | 1 |
| 46 | | | Spacer, Legrest Pad, Black | 1 | 1 |
| 47 | | | Bracket Assembly, Adjustable Legrest Pad, Color | 1 | 1 |
| 48 | | | NLA - Washer, Steel (1/4 x 1/2 x 3/64") | 1 | 1 |
| 49 | | | Screw, Hex Head w/ Patch (1/4-20 x 1/2") | 1 | 1 |
| 50 | | | Screw, Socket Flat Head (5/16-18 x 2-1/4") | 1 | 1 |
| 51 | E | 1130753 | Kit, Pivot Slide Tube Attaching Hardware | 1 | 1 |
| 52 | | | Screw, Lug (5/16-24 x 1-3/8") | 1 | 1 |
| 53 | | | Washer (11/32 x 53/64 x 1/8") | 1 | 1 |
| 54 | | | Locknut, Nylon Cap (5/16-24) | 1 | 1 |
| | H | 1151367 | Kit, Housing Latch Handle w/Hardware - Right | 1 | 1 |
| 13 | | | Housing, Latch - Right | 1 | 1 |
| 14 | | | Screw, Slotted Hex Washer Head (#10-32 x 5/8") | 1 | 2 |
| 16 | | | Screw, Slotted Hex Washer Head w/ Patch (#10-32 x 1/2") | 1 | 1 |
| | H | 1151368 | Kit, Housing Latch Handle w/Hardware - Left | 1 | 1 |
| 13 | | | Housing, Latch - Left | 1 | 1 |
| 14 | | | Screw, Slotted Hex Washer Head (#10-32 x 5/8") | 1 | 2 |
| 16 | | | Screw, Slotted Hex Washer Head w/ Patch (#10-32 x 1/2") | 1 | 1 |

NOTE: A - Includes items 2,18,32, & 42
 B - Includes items 3-17
 C - Includes items 19-31
 D - Includes items 7 and 33-41
 E - Includes items 52-54
 F - Includes items 43-50
 G - Specify frame finish when ordering
 H - Includes items 13, 14 and 16.