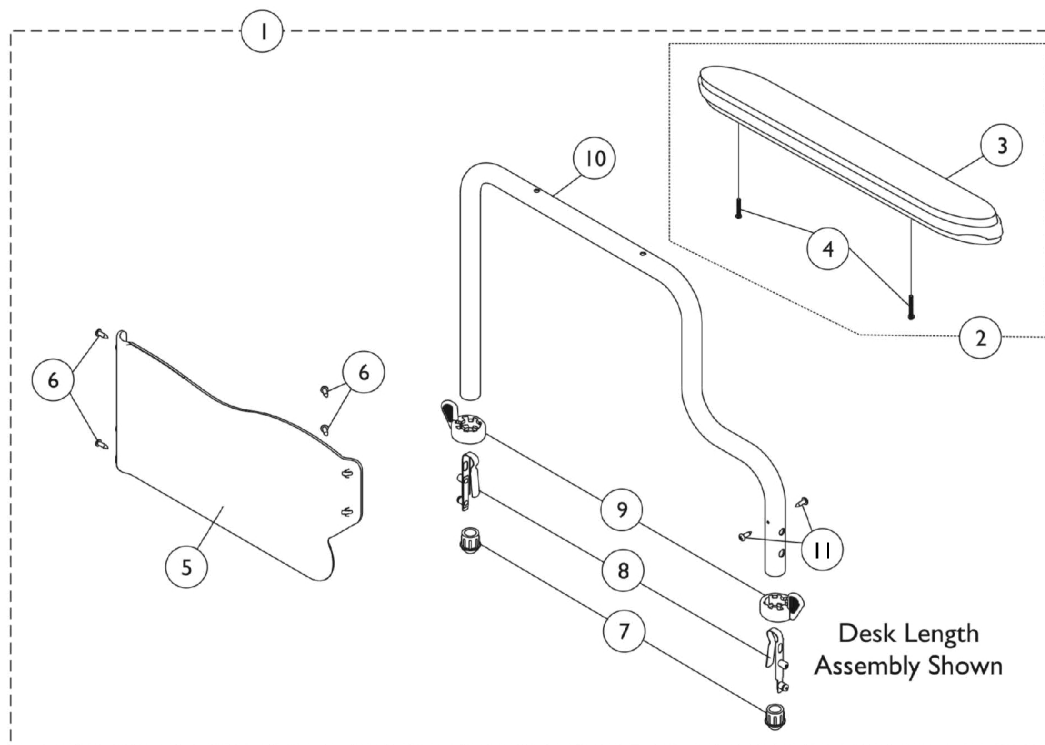
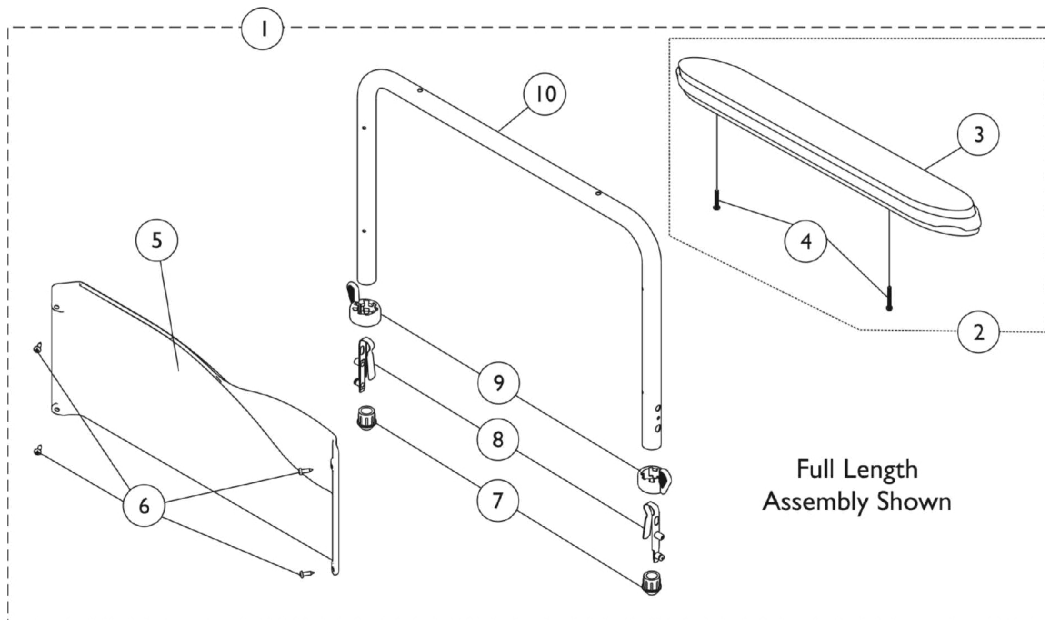


Conventional Fixed Height Arms - Removable/Non-Removable



Conventional Fixed Height Arms - Removable/Non-Removable

Item Number	Note	Part Number	Description	Quantity Per	
				Package	Assembly
1	A,B	8881130823	Kit, Armrest, Full Length, Color - Right (Style 18)	1	1
3			NLA - Pad, Arm, Full Length w/ Law Label	1	1
4			Screw, Phillips Pan Head (#10-32 x 1-1/8")	1	2
5			Guard, Clothing, Full Length - Right	1	1
6			Screw, Self Tapping (#6-20 x 1/2")	1	4
7			Plug, Armrest, Black (3/4") (18GA)	1	2
8			Spring, Torsion with Button Lock	1	2
9			Handle, Quad Release	1	2
10			Tube, Armrest, Conventional, Full Height, Color	1	1
1	A,B	8881130824	Kit, Armrest, Full Length, Color - Left (Style 18)	1	1
3			NLA - Pad, Arm, Full Length w/ Law Label	1	1
4			Screw, Phillips Pan Head (#10-32 x 1-1/8")	1	2
5			Guard, Clothing, Full Length - Left	1	1
6			Screw, Self Tapping (#6-20 x 1/2")	1	4
7			Plug, Armrest, Black (3/4") (18GA)	1	2
8			Spring, Torsion with Button Lock	1	2
9			Handle, Quad Release	1	2
10			Tube, Armrest, Conventional, Full Height, Color	1	1
1	A,B	8881135542	Kit, Armrest, Desk Length, Color - Right (Style 28)	1	1
3			Arm Pad, Desk Length w/ Law Label	1	1
4			Package, Screw Phillips Pan Head (#10-32 x 1-1/8")	1	2
5			NLA - Guard, Clothing, Desk Length - Right	1	1
6			Screw, Self Tapping (#6-20 x 1/2")	1	4
7			Plug, Armrest, Black (3/4") (18GA)	1	2
8			Spring, Torsion with Button Lock	1	2
9			Handle, Quad Release	1	2
10			Tube, Armrest, Desk Length, Color - Right	1	1
11			Screw, Phillips Pan Head Tap (#6-20 x 3/8")	1	2
1	A,B	8881135543	Kit, Armrest, Desk Length, Color - Left (Style 28)	1	1
3			Arm Pad, Desk Length w/ Law Label	1	1
4			Package, Screw Phillips Pan Head (#10-32 x 1-1/8")	1	2
5			NLA - Guard, Clothing, Desk Length - Left	1	1
6			Screw, Self Tapping (#6-20 x 1/2")	1	4
7			Plug, Armrest, Black (3/4") (18GA)	1	2
8			Spring, Torsion with Button Lock	1	2
9			Handle, Quad Release	1	2
10			Tube, Armrest, Desk Length, Color - Left	1	1
11			Screw, Phillips Pan Head Tap (#6-20 x 3/8")	1	2
2	C	8881127509	Kit, Arm Pad w/Screws - Full Length	1	1
3			NLA - Pad, Arm, Full Length w/ Law Label	1	1
4	C	8881127510	Screw, Phillips Pan Head (#10-32 x 1-1/8")	1	2
2			Kit, Arm Pad w/Screws - Desk Length	1	1
3			Arm Pad, Desk Length w/ Law Label	1	1
4			Package, Screw Phillips Pan Head (#10-32 x 1-1/8")	1	2

Conventional Fixed Height Arms - Removable/Non-Removable

Item Number	Note	Part Number	Description	Quantity Per	
				Package	Assembly
2	F	1117327	Kit, Arm Pad w/ Screws, Desk Length, Urethane Waterfall, Black (9" L x 2-5/8" W)	1	1
2	F	1117328	Kit, Arm Pad w/ Screws, Full Length, Urethane Waterfall, Black (13" L x 2-5/8" W)	1	1
2	F	1110817	Kit, Arm Pad w/ Screws, Desk Length, Urethane Waterfall, Black (9" L x 2-5/8" W) (Pair)	2	1
2	F	1110818	Kit, Arm Pad w/ Screws, Full Length, Urethane Waterfall, Black (13" L x 2-5/8" W) (Pair)	2	1
5	D	1117365	Kit, Clothing Guard, Conventional, Desk Length w/ Screws and Decals (Pair)	2	1
5	D	1117366	Kit, Clothing Guards - Conventional, Full Length w/ Screws & Decals	2	1
	E	1040329-NLA	NLA - Kit, Non-Removable Fixed Height Arm Hardware	2	1
NOTE: A - Includes items 3-10 for Full Length Arms and items 3-11 for Desk Length Arms.. B - Specify upholstery color, see page titled "Frame Finishes, Upholstery Colors, Decals, and Packaging." C - Includes items 3 and 4. D - Includes 2 ea. Clothing Guards (Rt./Lt.), 2 ea. Decals, and 8 ea. Screws (6-20 x 1/2"). E - Not Shown. Includes Clothing Guards (Rt./Lt.) and all hardware necessary to convert arms to Non-Removable. F - Urethane Waterfall Armpads were changed from Upholstered Waterfall Armpads on or around 01/03/2002.					