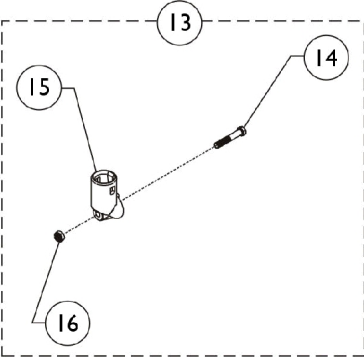
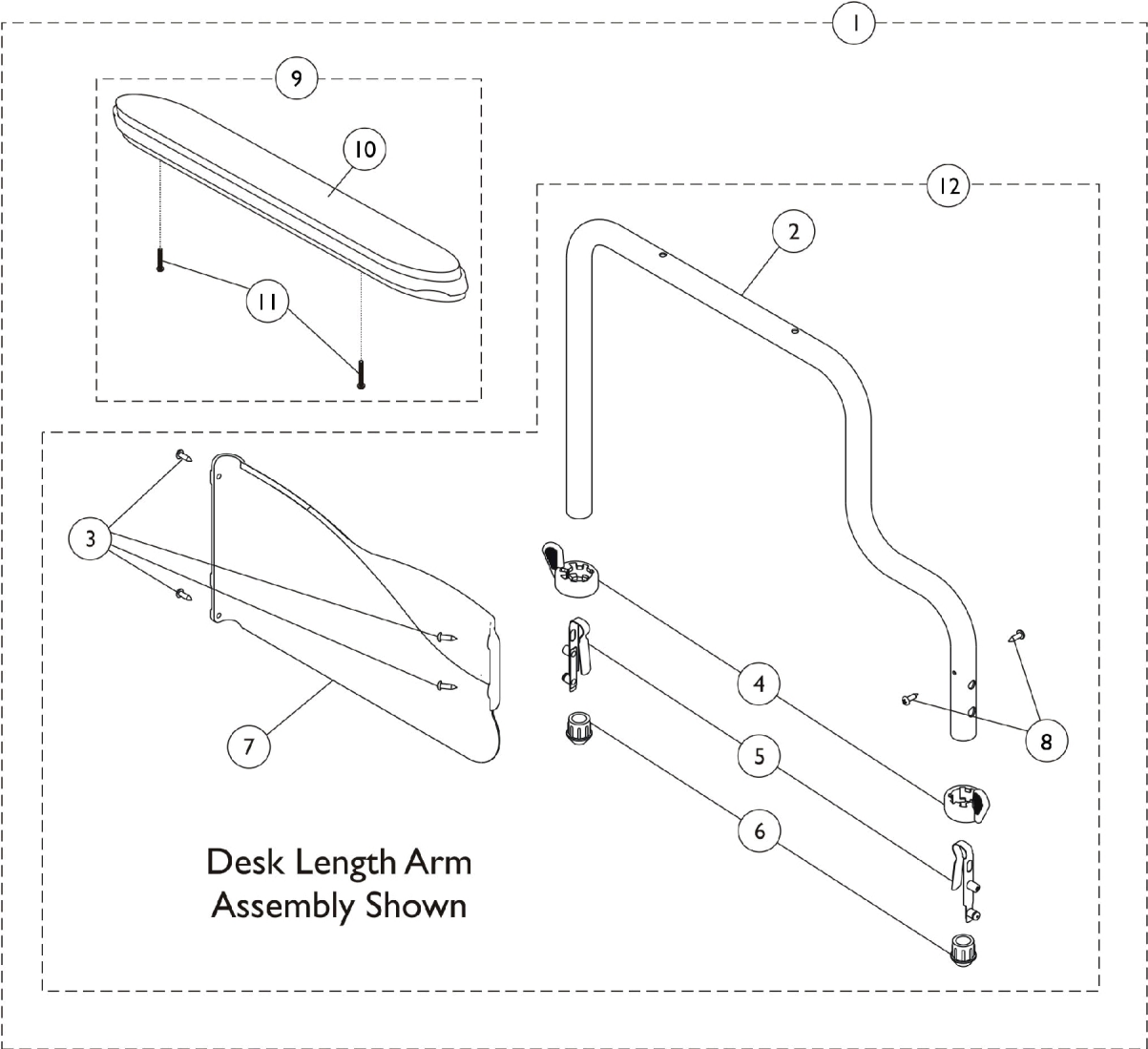


# 9000XT Recliner Removable Conventional Fixed Height Arms



# 9000XT Recliner Removable Conventional Fixed Height Arms

| Item Number | Note | Part Number | Description  | Quantity Per |          |
|-------------|------|-------------|--|--------------|----------|
|             |      |             |  | Package      | Assembly |
| 1           | A,B  | 8881130832  | Kit, Armrest, Full Length,Color - Right (Style 18)     | 1            | 1        |
| 2           |      |             | Armrest, Conventional, Full Height, Color - Right/Left | 1            | 1        |
| 3           |      |             | Screw, Self Tapping (#6-20 x 1/2")                     | 1            | 4        |
| 4           |      |             | Handle, Quad Release                                   | 1            | 2        |
| 5           |      |             | Spring, Torsion with Button Lock                       | 1            | 2        |
| 6           |      |             | Plug, Armrest, Black (3/4") (18GA)                     | 1            | 2        |
| 7           |      |             | Guard, Clothing, Full Length - Right                   | 1            | 1        |
| 10          |      |             | NLA - Pad, Arm, Full Length w/ Law Label               | 1            | 1        |
| 11          |      |             | Package, Screw Phillips Pan Head (#10-32 x 1-1/8")     | 1            | 1        |
| 3           |      | 1116900     | Screw, Self Tapping (#6-20 x 1/2")                     | 1            | 4        |
| 7           |      | 1110079     | Guard, Clothing, Full Length - Right                   | 1            | 1        |
| 1           | A,B  | 8881130833  | Kit, Armrest, Full Length, Color - Left (Style 18)     | 1            | 1        |
| 2           |      |             | Armrest, Conventional, Full Height, Color - Right/Left | 1            | 1        |
| 3           |      |             | Screw, Self Tapping (#6-20 x 1/2")                     | 1            | 4        |
| 4           |      |             | Handle, Quad Release                                   | 1            | 2        |
| 5           |      |             | Spring, Torsion with Button Lock                       | 1            | 2        |
| 6           |      |             | Plug, Armrest, Black (3/4") (18GA)                     | 1            | 2        |
| 7           |      |             | Guard, Clothing, Full Length - Left                    | 1            | 1        |
| 10          |      |             | NLA - Pad, Arm, Full Length w/ Law Label               | 1            | 1        |
| 11          |      |             | Package, Screw Phillips Pan Head (#10-32 x 1-1/8")     | 1            | 1        |
| 3           |      | 1116900     | Screw, Self Tapping (#6-20 x 1/2")                     | 1            | 4        |
| 7           |      | 1110080     | Guard, Clothing, Full Length - Left                    | 1            | 1        |
| 1           | A,H  | 8881130829  | Kit, Armrest, Full Length, Black - Right (Style 18)    | 1            | 1        |
| 2           |      |             | Armrest, Conventional, Full Height, Black - Right/Left | 1            | 1        |
| 3           |      |             | Screw, Self Tapping (#6-20 x 1/2")                     | 1            | 4        |
| 4           |      |             | Handle, Quad Release                                   | 1            | 2        |
| 5           |      |             | Spring, Torsion with Button Lock                       | 1            | 2        |
| 6           |      |             | Plug, Armrest, Black (3/4") (18GA)                     | 1            | 2        |
| 7           |      |             | Guard, Clothing, Full Length - Right                   | 1            | 1        |
| 10          |      |             | NLA - Pad, Arm, Full Length w/ Law Label               | 1            | 1        |
| 11          |      |             | Package, Screw Phillips Pan Head (#10-32 x 1-1/8")     | 1            | 2        |
| 3           |      | 1116900     | Screw, Self Tapping (#6-20 x 1/2")                     | 1            | 4        |
| 7           |      | 1110079     | Guard, Clothing, Full Length - Right                   | 1            | 1        |
| 1           | A,H  | 8881130830  | Kit, Armrest, Full Length, Black - Left (Style 18)     | 1            | 1        |
| 2           |      |             | Armrest, Conventional, Full Height, Black - Right/Left | 1            | 1        |
| 3           |      |             | Screw, Self Tapping (#6-20 x 1/2")                     | 1            | 4        |
| 4           |      |             | Handle, Quad Release                                   | 1            | 2        |
| 5           |      |             | Spring, Torsion with Button Lock                       | 1            | 2        |
| 6           |      |             | Plug, Armrest, Black (3/4") (18GA)                     | 1            | 2        |
| 7           |      |             | Guard, Clothing, Full Length - Left                    | 1            | 1        |
| 10          |      |             | NLA - Pad, Arm, Full Length w/ Law Label               | 1            | 1        |
| 11          |      |             | Package, Screw Phillips Pan Head (#10-32 x 1-1/8")     | 1            | 2        |

# 9000XT Recliner Removable Conventional Fixed Height Arms

| Item Number  | Note | Part Number | Description  | Quantity Per |          |
|--|------|-------------|--|--------------|----------|
|  |      |             |  | Package      | Assembly |
| 3  |      | 1116900     | Screw, Self Tapping (#6-20 x 1/2")   | 1            | 4        |
| 7  |      | 1110080     | Guard, Clothing, Full Length - Left  | 1            | 1        |
| 9  | C,H  | 8881127509  | Kit, Arm Pad w/Screws - Full Length  | 1            | 1        |
| 10   |      |             | NLA - Pad, Arm, Full Length w/ Law Label                                   | 1            | 1        |
| 11   |      |             | Package, Screw Phillips Pan Head (#10-32 x 1-1/8")                         | 1            | 2        |
| 9  | C,H  | 8881127510  | Kit, Arm Pad w/Screws - Desk Length  | 1            | 1        |
| 10   |      |             | Arm Pad, Desk Length w/ Law Label  | 1            | 1        |
| 11   |      |             | Package, Screw Phillips Pan Head (#10-32 x 1-1/8")                         | 1            | 2        |
| 12   | D    | 1071663     | Arm Assembly w/o Arm Pad, Desk Length, Black - Right                       | 1            | 1        |
| 12   | D    | 1071664     | Arm Assembly w/o Arm Pad, Desk Length, Black - Left                        | 1            | 1        |
| 12   | B,I  | 8881074654  | Arm Assembly w/o Arm Pad, Desk Length, Color - Right                       | 1            | 1        |
| 12   | B,I  | 8881074655  | Arm Assembly w/o Arm Pad, Desk Length, Color - Left                        | 1            | 1        |
|  | E,F  | 1117365     | Kit, Clothing Guard, Conventional, Desk Length w/ Screws and Decals (Pair) | 1            | 1        |
|  | E,F  | 1117366     | Kit, Clothing Guards - Conventional, Full Length w/ Screws & Decals        | 1            | 1        |
| 13   | G    | 1058139     | Kit, Armrest Hardware  | 1            | 1        |
| 14   |      |             | NLA - Screw, Hex Head (1/4-20 x 1-3/8")                                    | 1            | 1        |
| 15   |      |             | Cup, Socket Pivot  | 1            | 1        |
| 16   |      |             | Locknut (1/4-20)   | 1            | 1        |
| <p>NOTE: A - Includes items 2-7, 10 and 11.<br/>           B - Specify frame finish and upholstery color when ordering. See category titled, "Frame Finishes, Upholstery Colors, Decals and Packaging."<br/>           C - Includes items 11 and 12.<br/>           D - Includes items 2-8.<br/>           E - Not Shown.<br/>           F - Clothing Guard is not sold individually after 11/03. Kit Includes: Clothing Guards (RT &amp; LT sides), Screws &amp; Decals.<br/>           G - Includes items 14-16.<br/>           H - Specify upholstery color when ordering. See category titled, "Frame Finishes, Upholstery Colors, Decals and Packaging."<br/>           I - Specify frame finish when ordering. See category titled, "Frame Finishes, Upholstery Colors, Decals and Packaging."</p> |      |             |  |              |          |