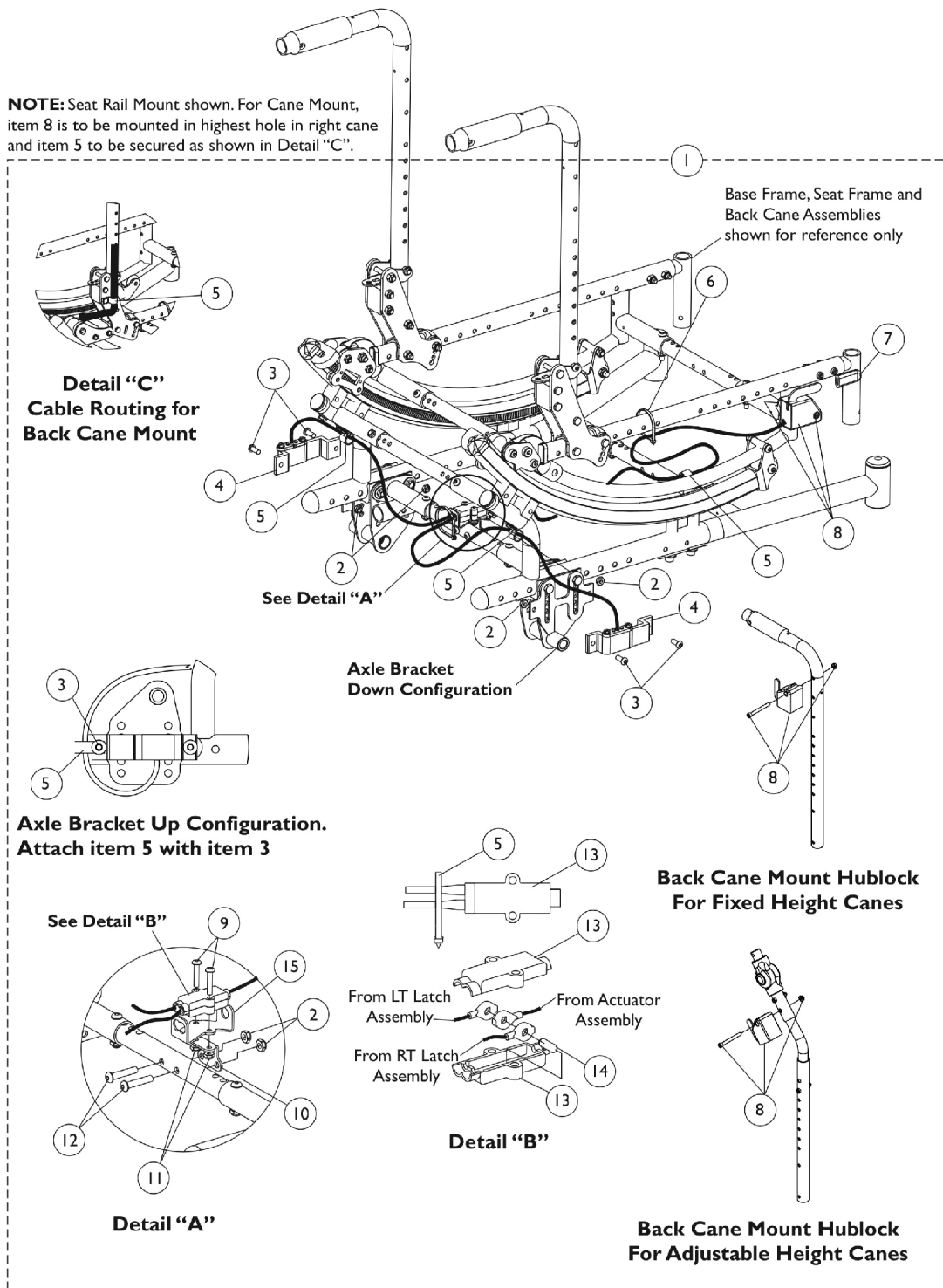


Hublock Replacement Kits - After 10/31/07

Attendant and User Hand Operated

NOTE: Seat Rail Mount shown. For Cane Mount, item 8 is to be mounted in highest hole in right cane and item 5 to be secured as shown in Detail "C".



Hublock Replacement Kits - After 10/31/07 Attendant and User Hand Operated

Item Number	Note	Part Number	Description	Quantity Per	
				Package	Assembly
1	A,B	1132608	Kit, Hublock Cables and Hardware - Hand Operated	1	1
2			Locknut (1/4-28)	1	6
3			Screw, Socket Button Head (1/4-28 x 5/8")	1	4
4			Latch with Cable Assembly, Hublock - Right	1	1
4			Latch with Cable Assembly, Hublock - Left	1	1
5			NLA - Bracket, Cable/Wire Mounting, Black	1	3
6			Tie Wrap (5-5/8" L)	1	1
7			Tip, Plastic, Black	1	1
8			Actuator w/ Cable Assembly, Hand Operated	1	1
9			Screw, Socket Button Head (#10-32 x 1")	1	2
10			Box, Junction Cable	1	1
11			Locknut (#10-32)	1	2
12			Screw, Socket Button Head (1/4-28 x 1-1/4")	1	2
13			Box, Junction Cable	1	2
14			Pin, Dowel (3/16 x 1/2")	1	1
15			Bracket, Junction Cable, Black	1	1
4	D,E	1132357	Latch with Cable Assembly, Hublock - Right	1	1
4	D,E	1132358	Latch with Cable Assembly, Hublock - Left	1	1
13		1132375	Box, Junction Cable	1	2
	C	1127688	Package, Plastic Tip, Black	10	1

NOTE: A - Includes items 2-14
B - Item 4 (Cable Assembly) & item 13 (Junction Box) are sold separately as service parts.
C - Not shown.
D - For chairs manufactured before 2/2/09, it is recommended to order the Hublock Latch with Cable Assembly part numbers 1132357 and 1132358 together.
E - For chairs manufactured after 2/1/09, it is also recommended to order both Hublock Latch with Cable Assembly part numbers 1132357 and 1132358 together to allow even wear on the components.