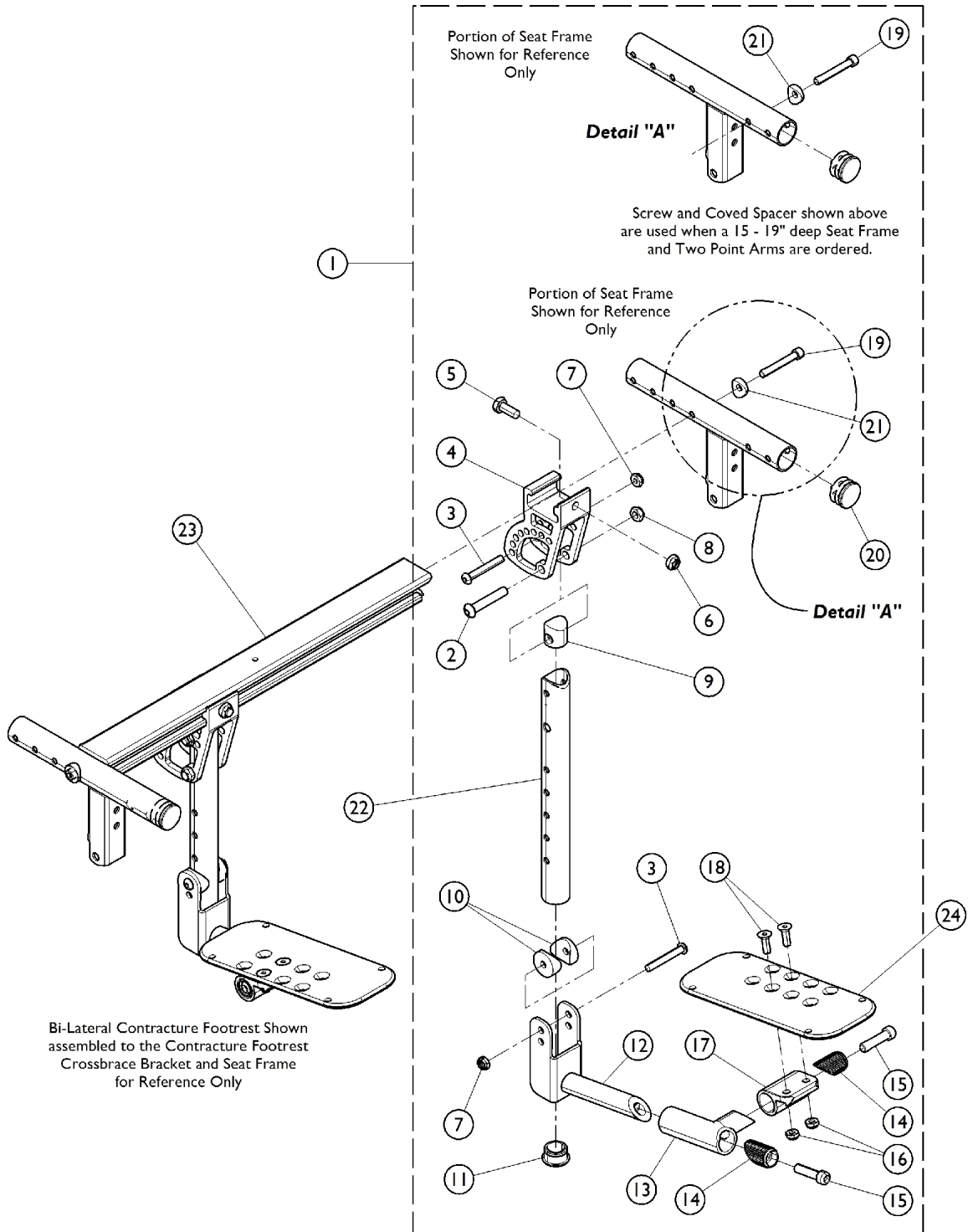


Bi-Lateral Contracture Footrest

When a Customer is requesting to add a Bi-Lateral Contracture Footrest to a wheelchair in the field for the first time, the wheelchair must be returned to Invacare for installation.



Bi-Lateral Contracture Footrest

When a Customer is requesting to add a Bi-Lateral Contracture Footrest to a wheelchair in the field for the first time, the wheelchair must be returned to Invacare for installation.

Item Number	Note	Part Number	Description	Quantity Per	
				Package	Assembly
1	A	1161737	Kit, Bi-Lateral Contracture Hardware (Pair)	1	1
2			NLA - Screw, Socket Button Head (5/16-24 x 1-3/4")	1	2
3			Screw, Socket Button Head (1/4-28 x 1-3/4")	1	4
4			Bracket, Angle Adjustment, Black	1	1
5			Screw, Hex Head (5/16-24 x 3/4")	1	2
6			Locknut (5/16-24)	1	2
7			Locknut, Thin (1/4-28)	1	4
8			Locknut (5/16-24)	1	2
9			Plug, Footrest	1	1
10			Spacer, Coved (1/4 x 1 x 9/16")	1	4
11			Plug Button, Black (1")	1	2
12			Bracket, Footplate Mounting, Black	1	2
13			Bracket, Footplate, Black - Right	1	1
13			Bracket, Footplate, Black - Left	1	1
14			Attachment, Hinge	1	4
15			Screw, Socket Head (5/16-18 x 1-1/4")	1	4
16			Locknut (1/4-28)	1	4
17			Bracket, Adjustable Angle Footplate, Black	1	2
18			Screw, Socket Flat Head (1/4-28 x 3/4")	1	4
19			NLA - Screw (1/4-20 x 1-3/4")	1	2
20			Plug Button, Black (1")	1	2
21			Spacer, Coved (1/4 x 11/16 x 1/2")	1	2
22	B	1161734	Tube, Contracture Footrest, Black, Short	1	2
22	C	1162944	Tube, Contracture Footrest, Black, Long	1	2
23		See Chart	#23 Contracture Crossbrace Brackets	1	2
24		See Chart	See Chart	1	2
NOTE: A - Includes items 2-21. Hardware quantity accommodates the right and left side. Item #21 Coved Spacer used only when a 15"-19" deep seat frame AND 2 point arms are used. 2 point arms do not include the "T" Arms or the Cantilever Arms. B - 13" - 16" Seat to Floor C - 16-1/2" - 19" Seat to Floor					

Bi-Lateral Contracture Footrest

When a Customer is requesting to add a Bi-Lateral Contracture Footrest to a wheelchair in the field for the first time, the wheelchair must be returned to Invacare for installation.

#23 Contracture Crossbrace Brackets

Seat Width	Part Number
12" Wide	1163810
13" Wide	1163811
14" Wide	1163812
15" Wide	1163813
16" Wide	1163814
17" Wide	1163815
18" Wide	1163436
19" Wide	1163816
20" Wide	1163817
21" Wide	1163818
22" Wide	1163819

Bi-Lateral Contracture Footrest

When a Customer is requesting to add a Bi-Lateral Contracture Footrest to a wheelchair in the field for the first time, the wheelchair must be returned to Invacare for installation.

#24 Adjustable Angle Footplates

Description	Part No.
Small 3-1/4" Wide Footplate	1113571
Medium 4-1/4" Wide Footplate	1113572
Large 5-1/4" Wide Footplate	1113573
X-Large 6-1/4" Wide Footplate	1113574
XX-Large 7-1/4" Wide Footplate	1113575