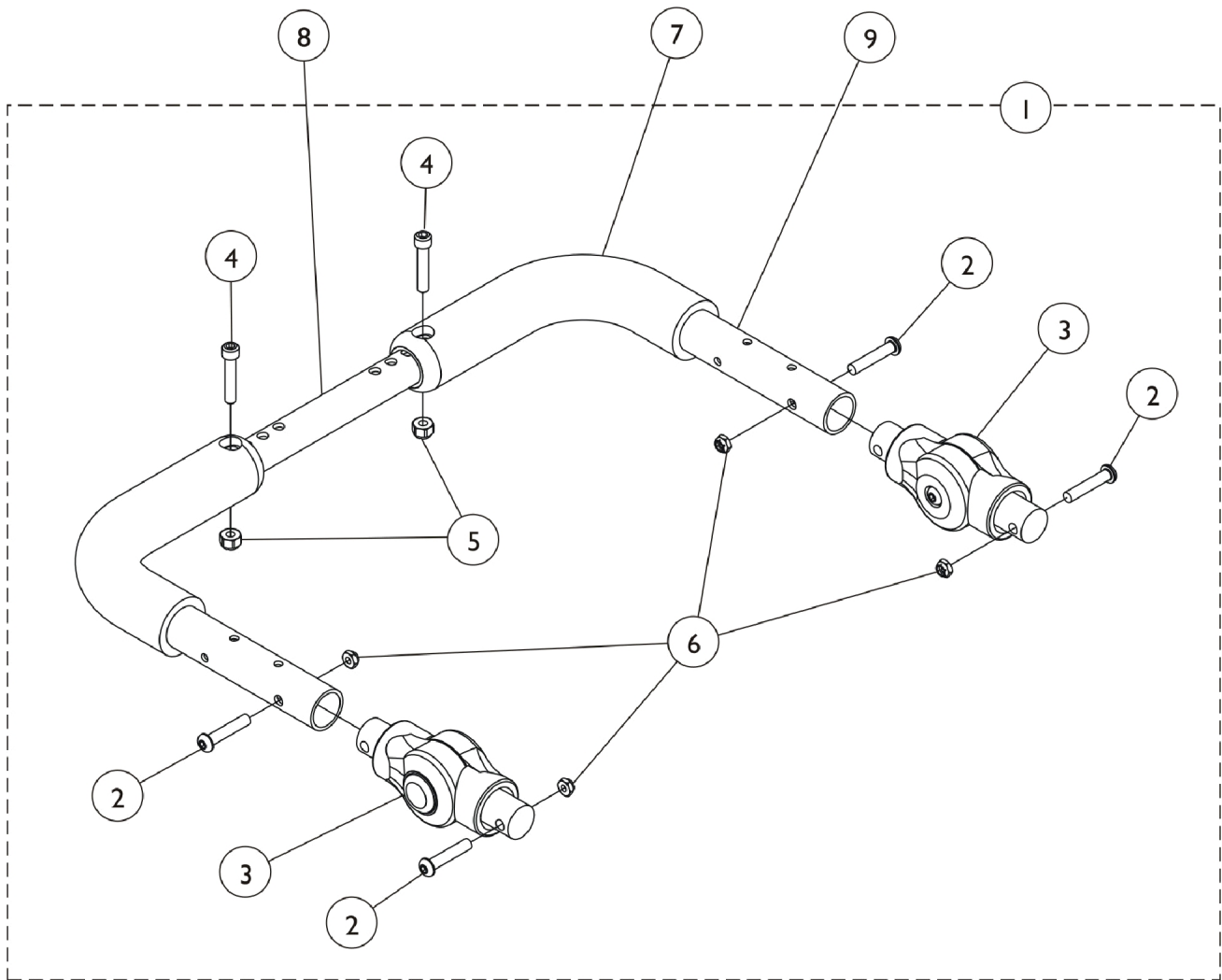


# Adjustable Angle Stroller Handle

## Rigid Inside Mount (AASHIN)



## Adjustable Angle Stroller Handle Rigid Inside Mount (AASHIN)

Item Number	Note	Part Number	Description	Quantity Per	
				Package	Assembly
1	A,B	1136693	Kit, Stroller Handle, Adjustable Angle - Inside Mount	1	1
2			Screw, Socket Button Head (1/4-28 x 1-1/4")	1	4
3			Gear, Stroller Handle	1	2
4			Screw, Socket Head (1/4-28 x 1-1/4")	1	2
5			Locknut (1/4-28)	1	2
6			Locknut (1/4-28)	1	4
7		1127767	Grip, Foam (9")	1	1
8		See Chart	#8 Crossbrace Tube	1	1
9	D	1150938	Stroller Handle Assembly - Right/Left	1	1
	C	1161431	Package, Adjusting Button, Black	10	1

NOTE: A - Includes items 2-6.  
 B - To order replacement Stroller Handle Gear Adjusting buttons, order package part number 1161431.  
 C - Not Shown.  
 D - Item #9 accommodates the right or left side. Includes item #8 Foam Grip also.

### #8 Crossbrace Tube

12" - 16" Wide	14" - 18" Wide	16" - 20" Wide	18" - 22" Wide	20" - 24" Wide
1129473	1129474	1129475	1129476	1159455