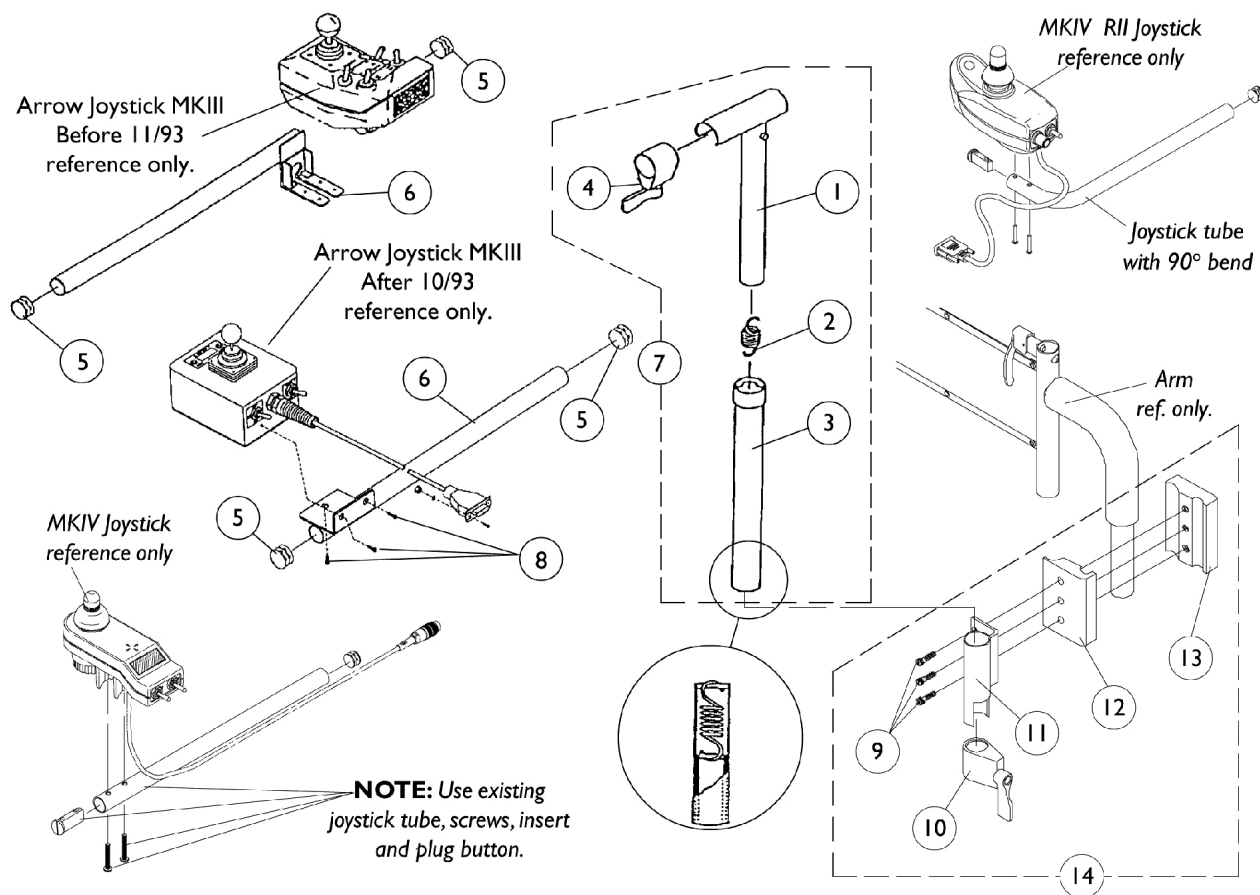


Mid-Line Swing Bracket Assembly

NOTE: Joystick tube with 90 degree bend replaces the standard tube when joysticks PSF, PSR and (RII part number 1092610) are used. Joystick Tube with 90 degree bend must be ordered as a special when a replacement is needed.



Mid-Line Swing Bracket Assembly

NOTE: Joystick tube with 90 degree bend replaces the standard tube when joysticks PSF, PSR and (RII part number 1092610) are used. Joystick Tube with 90 degree bend must be ordered as a special when a replacement is needed.

Item Number	Note	Part Number	Description	Quantity Per	
				Package	Assembly
1		1035528-NLA	NLA - Tube, Adjustment, Inside, Mid-Line, Black	1	1
2		1016778-NLA	NLA - Spring, Extension (9/16 x 1-3/8" L)	1	1
3		1035860-NLA	NLA - Tube, Adjustment, Outside, Mid-Line, Black	1	1
4		1027274	Adjustment Lock Assemnbly, Black	1	1
5		1027095	Plug Button, Black (7/8")	1	2
6	A,B	1035857-NLA	NLA - Tube, Joystick Mounting	1	1
6	A,C	1038425-NLA	NLA - Tube, Joystick Mounting	1	1
6	A,G	1035855-NLA	NLA - Tube, Joystick Mounting	1	1
7	D	1035852-NLA	NLA - Swing Bracket Assembly, Mid-Line, Black	1	1
8		1016401-NLA	NLA - Screw, Phillips Round Head (#10-32 x 3/8")	1	3
9		7930349-NLA	NLA - Screw, Hex Head (1/4-20 x 1-1/8")	25	3
10		1027274	Adjustment Lock Assemnbly, Black	1	1
11		1049582-NLA	NLA - Bracket, Joystick Mounting, Black	1	1
12		1027266	Half Clamp, Non-Threaded Holes	1	1
13		1027267-NLA	NLA - Half Clamp, Threaded Holes	1	1
14	E	1049591-NLA	NLA - Hardware, Joystick Tube Mounting	1	1
	F	1092610-NLA	NLA - Joystick, RII	1	1
NOTE: A - Left side is not a stock item and must be ordered as a special. B - Arrow Before 11/93 - Right C - Arrow After 10/93 - Right D - Does not include items 5, 6 or 8 E - Includes items 9-13 F - Not Shown G - Ranger X (MCC X)					