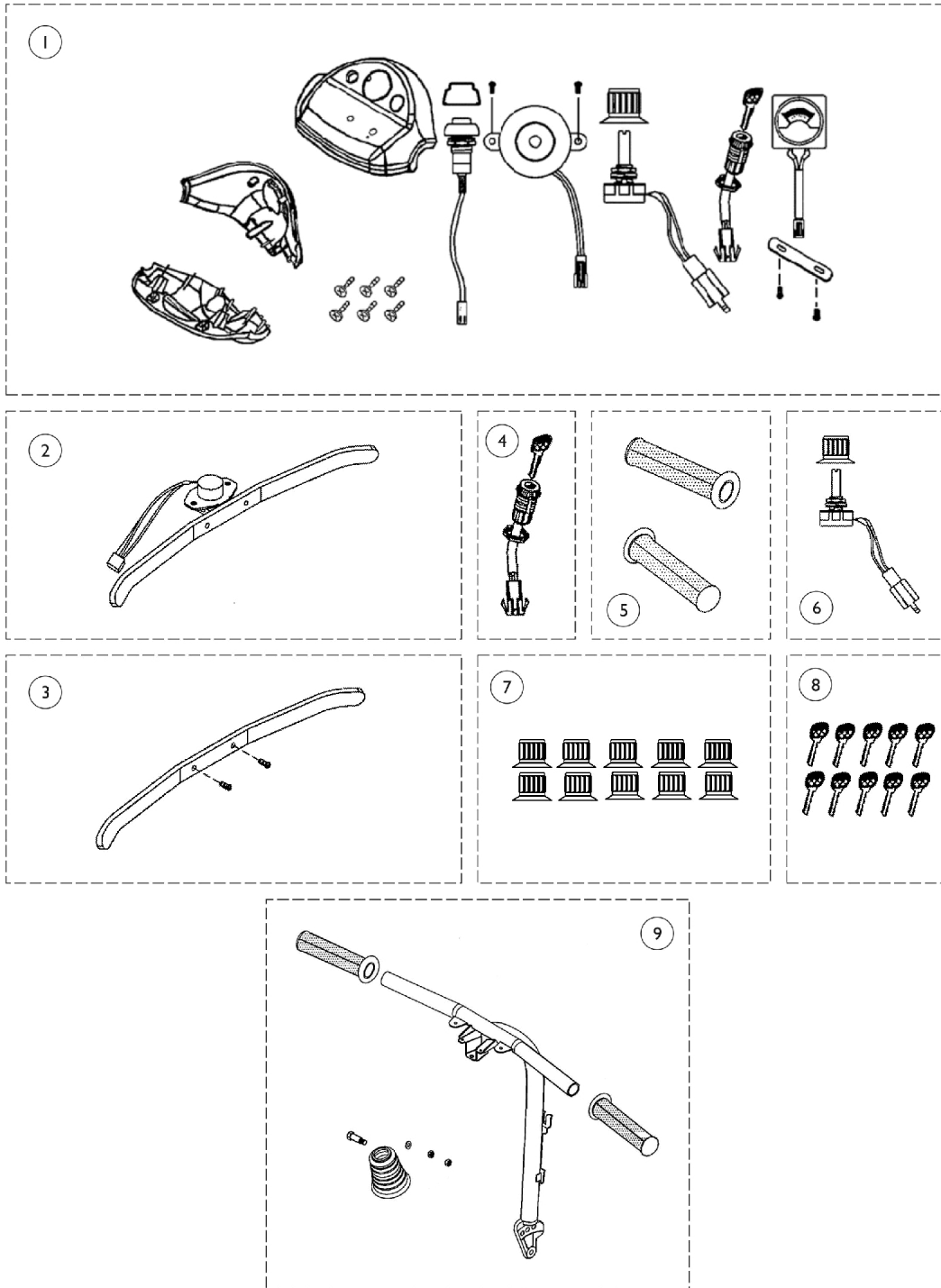


Tiller Maintenance

Starting with Serial Number 10BCT600000 (L-3) and 10BCT600248 (L-4), the shade of Blue used on the Shrouds changed from Blue to Onyx Blue. Customers may have to replace all Shrouds with the Onyx Blue Shrouds if color consistency is important.



Tiller Maintenance

Starting with Serial Number 10BCT600000 (L-3) and 10BCT600248 (L-4), the shade of Blue used on the Shrouds changed from Blue to Onyx Blue. Customers may have to replace all Shrouds with the Onyx Blue Shrouds if color consistency is important.

Item Number	Note	Part Number	Description	Quantity Per	
				Package	Assembly
1	A,C	1144807	Kit, Tiller Steering Cover, Red - Includes: Tiller Cover - Upper (1), Tiller Cover - Front (1), Tiller Cover - Rear (1), Screws (6), Faceplate Sticker (1), Reflector (1), Meter/Lamp PC Board (1), Battery Indicator (1), Screws (2), Speed Pot (1), Speed Pot Knob (1), Ignition Switch w/ Key (1), Horn Speaker (1), Screws (2), Horn Button (1), Horn Button Cap (1), and Decals	1	1
1	A,C	1144808	Kit, Tiller Steering Cover, Blue - Includes: Tiller Cover - Upper (1), Tiller Cover - Front (1), Tiller Cover - Rear (1), Screws (6), Faceplate Sticker (1), Reflector (1), Meter/Lamp PC Board (1), Battery Indicator (1), Screws (2), Speed Pot (1), Speed Pot Knob (1), Ignition Switch w/ Key (1), Horn Speaker (1), Screws (1), Horn Button (1), Horn Button Cap (1), and Decals	1	1
1	A,D	1169661	Kit, Tiller Steering Cover, Onyx - Includes: Tiller Cover - Upper (1), Tiller Cover - Front (1), Tiller Cover - Rear (1), Screws (6), Faceplate Sticker (1), Reflector (1), Meter/Lamp PC Board (1), Battery Indicator (1), Screws (2), Speed Pot (1), Speed Pot Knob (1), Ignition Switch w/ Key (1), Horn Speaker (1), Screws (2), Horn Button (1), Horn Button Cap (1), and Decals	1	1
2		1144795	Throttle Pot and Lever Assembly	1	1

Tiller Maintenance

Starting with Serial Number 10BCT600000 (L-3) and 10BCT600248 (L-4), the shade of Blue used on the Shrouds changed from Blue to Onyx Blue. Customers may have to replace all Shrouds with the Onyx Blue Shrouds if color consistency is important.

Item Number	Note	Part Number	Description	Quantity Per	
				Package	Assembly
3		1144796	Throttle Lever w/ Hardware	1	1
4		1144793	Ignition Switch with Key Assembly	1	1
5		1144802	Hand Grip (Pair)	2	1
6		1144791	Kit, Speed Pot - Includes: Speed Control Knob (1) and Speed Pot - 30 K Ohms (1)	1	1
7		1144792	Package, Speed Control Knob	10	1
8		1144794	Package, Ignition Key	10	1
9		1148841	Kit, Steering Bar Includes: (1) ea. Steering Bar, (2) ea. Hand Grips, (1) ea. Plain Washer, (2) ea. Nylon Washer, and (1) ea. Bolt.	1	1
NOTE: A - For use with Rhino-70 Controller or DR-50 Controller C - To be used on scooters built before serial number 10BCT600001(L-3) and 10BCT600249 (L-4). D - To be used on scooters built after serial number 10BCT600000 (L-3) and 10BCT600248 (L-4).					