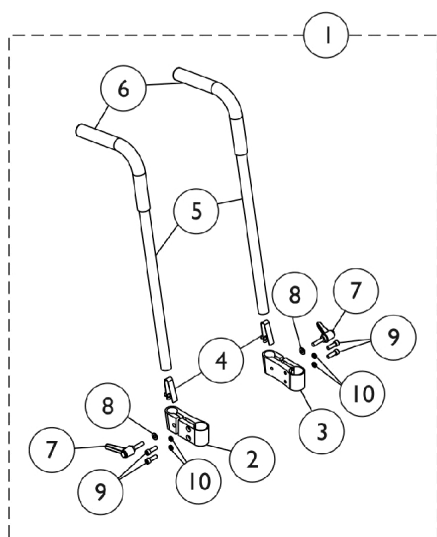
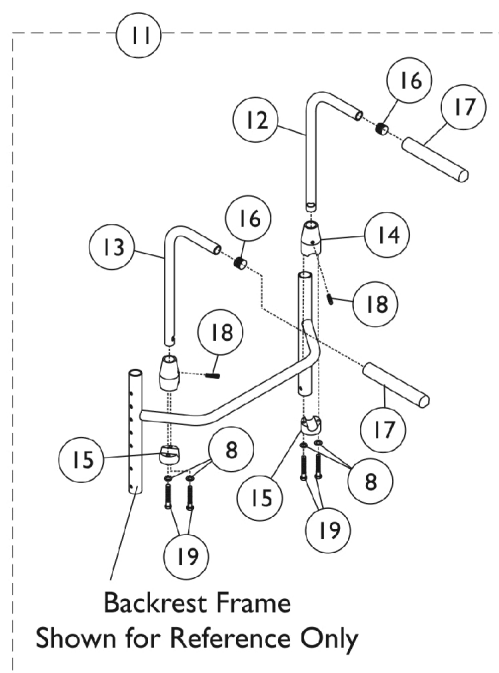


Back Canes w/ Push Handle Assemblies

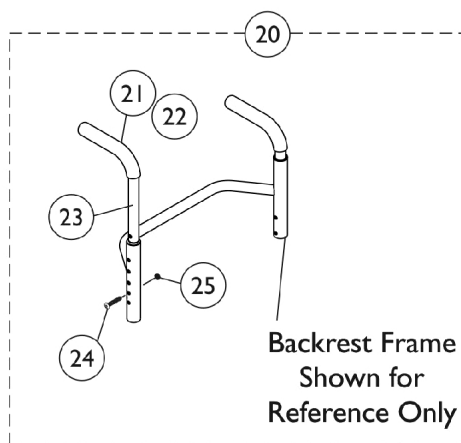
When changing back heights you also need to change the backrest and the back upholstery.



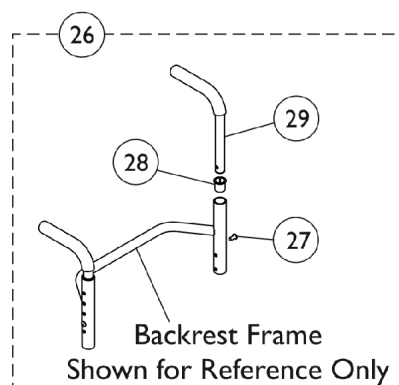
Bolt-On Adjustable Height (CRF82)



Bolt-On Non-Adjustable Height (CRF13)



Bolt Through Integral
Before 5/22/09 (CRF97)



Bolt Through Integral
After 5/21/09 (CRF97)

Back Canes w/ Push Handle Assemblies

When changing back heights you also need to change the backrest and the back upholstery.

Item Number	Note	Part Number	Description	Quantity Per	
				Package	Assembly
1	A	1116587-NLA	NLA - Kit, Push Handle Assembly w/ Hardware, Adjustable Height (Pair)	1	1
2			NLA - Clamp, Push Handle - Right	1	1
3			Clamp, Push Handle - Left	1	1
4			Spring, Torsion w/ Button	1	2
5			Tube, Push Handle	1	2
6			Grip, Foam (8")	1	2
7			Lever	1	2
8			Washer (1/4 x 1/2 x 1/16")	1	2
9			NLA - Screw, Socket Head (1/4-20 X 3/4")	1	4
10			NLA - Lockwasher, High Collar, Split (1/4")	1	4
11	B	1032213-NLA	NLA - Push Handle Assembly w/ Hardware, Bolt On (Pair)	2	1
12			NLA - Handle, Push, Black - Right	1	1
13			NLA - Handle, Push, Black - Left	1	1
14			NLA - Clamp, Threaded, Top	1	2
15			NLA - Clamp, Non-Threaded, Bottom	1	2
16			1027097 Plug Button, Black (3/4")	1	2
17			1028431-NLA NLA - Grip, Foam, Black (5")	1	2
18			1032217-NLA NLA - Screw, Set Flat Point (1/4-20 x 1")	1	2
19			1025713-NLA NLA - Screw, Hex Head (1/4-20 x 1")	1	4
20	C	1054773-NLA	NLA - Cane, Back, Straight w/ Push Handle and Hardware (10-14" H)	1	1
21			Grip, Foam (8")	1	1
22			Plug Button, Black (3/4")	1	1
23			NLA - Back Cane w/ Push Handle, Straight (10-14" H)	1	1
24			Screw, Socket Button Head (1/4-20 x 1-1/4")	1	1
25			NLA - Locknut (1/4-20)	1	1
20	C	1054774-NLA	NLA - Cane, Back, Straight w/ Push Handle and Hardware (12-16" H)	1	1
21			Grip, Foam (8")	1	1
22			Plug Button, Black (3/4")	1	1
23			NLA - Back Cane w/ Push Handle, Straight (12-16" H)	1	1
24			Screw, Socket Button Head (1/4-20 x 1-1/4")	1	1
25			NLA - Locknut (1/4-20)	1	1
20	C,G	1027850-NLA	NLA - Cane, Back, Straight w/ Push Handle and Hardware (12-16" and 14-18" H)	1	1
21			Grip, Foam (8")	1	1
22			NLA - Cane, Back, Straight, Black - Right/Left	1	1
23			Screw w/ Washer (#10 x 7/8")	1	1
24			Screw, Socket Button Head (1/4-20 x 1-1/4")	1	1
25			NLA - Locknut (1/4-20)	1	1
20	C,H	1044031-NLA	NLA - Back Cane w/ Hardware, Straight w/ Push Handle (14-18" and 16-20" H)	1	1
21			Grip, Foam (8")	1	1
22			NLA - Back Cane, Straight w/ Push Handle	1	1

Back Canes w/ Push Handle Assemblies

When changing back heights you also need to change the backrest and the back upholstery.

Item Number	Note	Part Number	Description	Quantity Per		
				Package	Assembly	
24	D,E	1163659-NLA	Screw, Socket Button Head (1/4-20 x 1-1/4")	1	1	
25			NLA - Locknut (1/4-20)	1	1	
26			NLA - Kit, Push Handle Assembly w/ Hardware, Integral (Pair) (8-11" H)	1	1	
27			Screw, Socket Button Head (1/4-20 x 7/8")	1	2	
28			Bushing, Pivot	1	2	
29	D,F	1145663-NLA	Back Cane Assembly, Integral	1	2	
			Package, Screw with Washer (#10 x 7/8") (Pair)	2	1	
26			NLA - Kit, Push Handle Assembly w/ Hardware, Integral (Pair)	1	1	
27			Screw, Socket Button Head (1/4-20 x 7/8")	1	2	
28			Bushing, Pivot	1	2	
29		Push Handle Assembly, Integral	1	2		
		Package, Screw with Washer (#10 x 7/8") (Pair)	2	1		
		J	1050072-NLA	NLA - Back Cane w/ Push Handle, Straight (10-14" H)	1	2
		K	1050073-NLA	NLA - Back Cane w/ Push Handle, Straight (12-16" H)	1	2
		L	1088491-NLA	NLA - Back Cane w/ Push Handle, Straight (14-18" H)	1	2
		M	1040785-NLA	NLA - Back Cane w/ Push Handle, Straight (16-20" H)	1	2
		N	1006229	Grip, Foam (8")	1	2
		N	1027097	Plug Button, Black (3/4")	1	2
		N	1024786	Bushing, Pivot	1	2
		N	1154988	Screw, Socket Button Head (1/4-20 x 7/8")	1	2
NOTE: A - Includes items 2-10. B - Includes items 8, 12-19. C - Before 6/10/09. Includes items 21-25. Part number 1044031 includes items 21, 22, 24 and 25. Quantities cover one side of chair only D - After 6/9/09. Includes items 27-29. Upholstery Screw Package part # 1026298 is not shown. E - Kit covers 8-11" back heights F - Kit covers 10-14", 12-16", 14-18" and 16-20" back heights G - Crossfire T6A model covers 14-18" back heights H - Crossfire T6A model covers 16-20" back heights J - Not shown in illustration, used for 10-14" back heights for chairs manufactured before 6/4/2012. (CRF97) K - Not shown in illustration, used for 12-16" back heights for chairs manufactured before 6/4/2012. (CRF97) L - Not shown in illustration, used for 14-18" back heights for chairs manufactured before 6/4/2012. (CRF97) M - Not shown in illustration, used for 16-20" back heights for chairs manufactured before 6/4/2012. (CRF97) N - Not shown. Use for all chairs manufactured before 6/4/2012. (CRF97)						