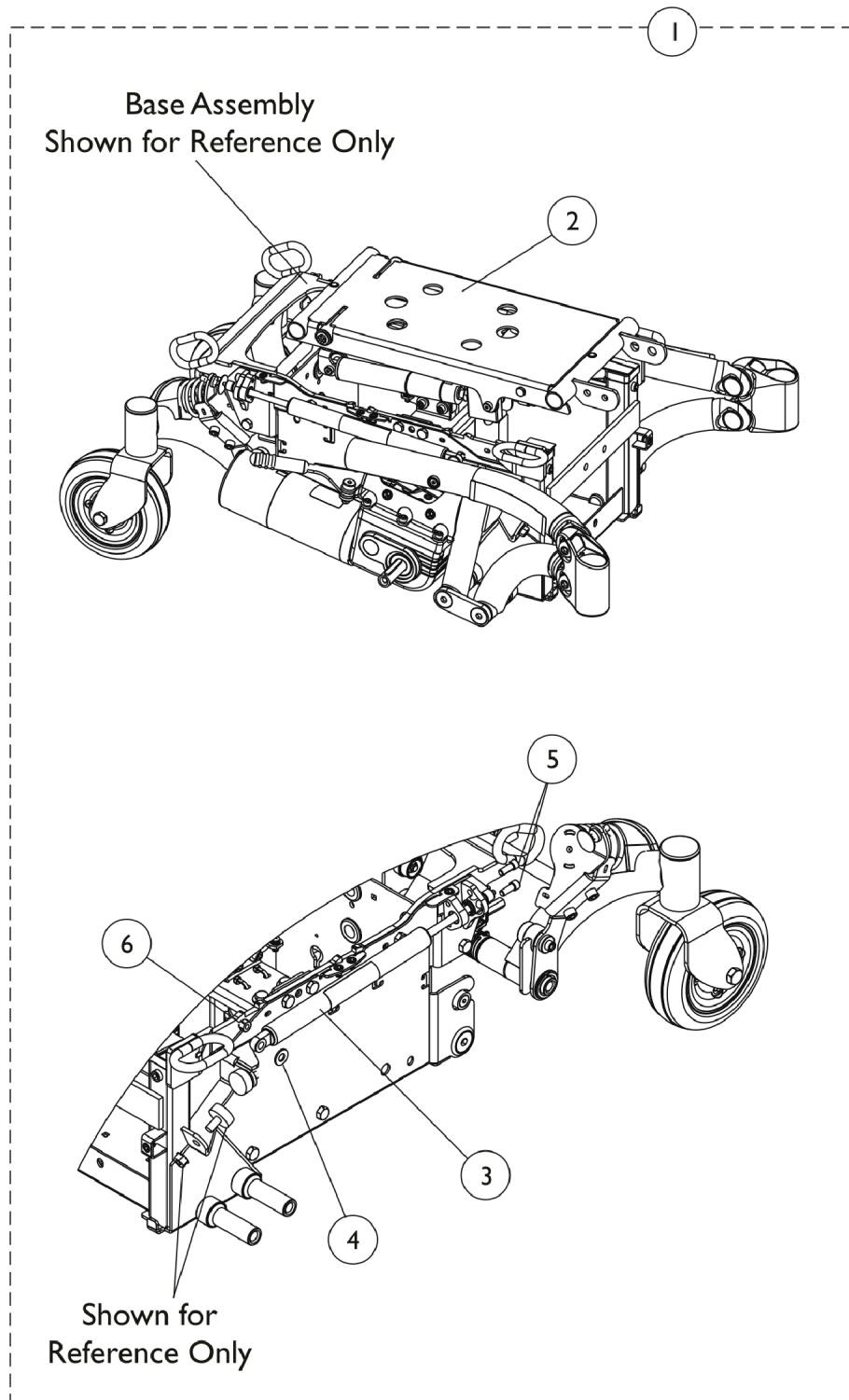


Locking Cylinder Retrofit Kit

TDX Spree w/ Manual Tilt Seating System For Chairs Built Before 2/12/09



Locking Cylinder Retrofit Kit

TDX Spree w/ Manual Tilt Seating System For Chairs Built Before 2/12/09

Item Number	Note	Part Number	Description	Quantity Per	
				Package	Assembly
1	A,B	1163237-NLA	NLA - Kit, Locking Cylinder Retrofit	1	1
2			Frame, Elevate Manual Tilt, Black	1	1
2			Frame, Manual Tilt Center Seat, Black	1	1
2			NLA - Screw, Shoulder Hex Socket Head (5/16" x 1", 1/4-20)	1	2
2			NLA - Screw, Shoulder Hex Socket Head (5/16" x 1-1/4", 1/4-20)	1	2
2			Locknut (1/4-20)	1	4
2			Cylinder, Gas w/ Release Cable - Right	1	1
2			Cylinder, Gas w/ Release Cable - Left	1	1
2			Spacer (5/16 x 1/2 x 3/8")	1	2
2			Washer, Nylon (5/16 x 7/8 x 1/8")	1	5
2			Bumper, Rubber (1" Diameter x 3/8")	1	2
2			NLA - Nut, Keps (5/16-18)	1	2
2			Washer, Steel (5/16 x 3/4 x 1/16")	1	2
2			Rod, Pivot	1	1
2			Screw, Hex Head w/ Patch (1/4-20 x 3/4")	1	2
2			Washer (1/4 x 23/32 x 1/16")	1	2
3			Locking Cylinder w/Pivot Assembly	1	2
4			Washer, Nylon (11/32 x 11/16 x 1/16")	1	2
5			Screw, Socket Head (1/4-20 x 5/8")	1	4
6			Locknut (1/4-20)	1	2
			Instruction Sheet, Locking Cylinder	1	1
NOTE: A - Includes items 2-6 and instruction sheet.					
B - For TDX Spree chairs w/ Manual Tilt built before 2/12/09. Once retrofit kit has been installed, replacement cylinders can be ordered separately. See category titled, "Locking Cylinder".					