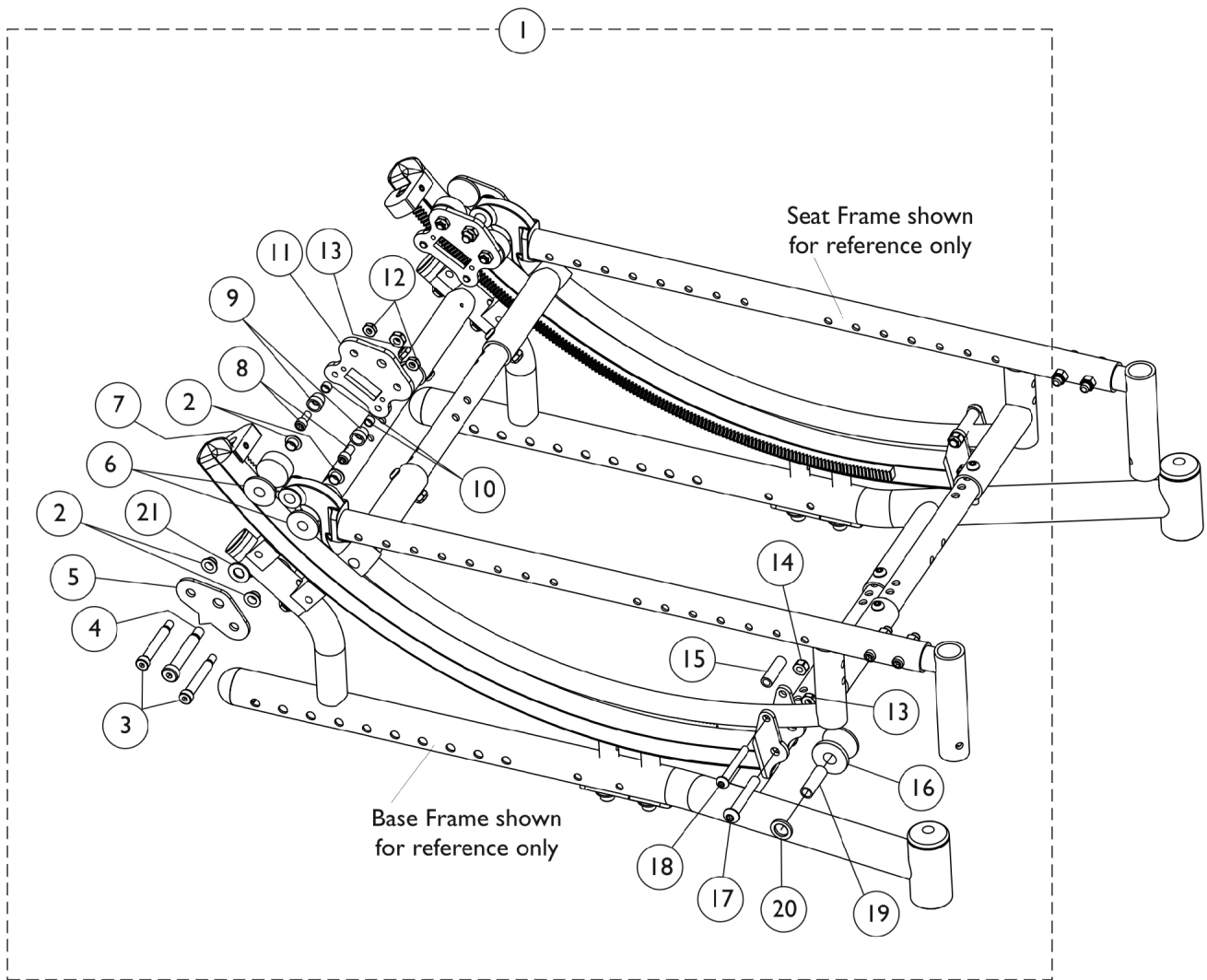


Tilt Hardware - Foot Pedal Release

Introduced 1/12/2009

Invacare does not service any parts associated with the TRRO/TRBKTS option including tilt hardware, belts, belt attachment hardware, tie-down brackets, etc. Chairs with the Transport Ready or Transport Bracket option must be returned to Invacare for service. If a wheelchair is ordered as a Foot Release or a Hand Release, it CANNOT be retrofitted in the field to accept the other Tilting function. A new wheelchair must be ordered.



Tilt Hardware - Foot Pedal Release

Introduced 1/12/2009

Invacare does not service any parts associated with the TRRO/TRBKTS option including tilt hardware, belts, belt attachment hardware, tie-down brackets, etc. Chairs with the Transport Ready or Transport Bracket option must be returned to Invacare for service. If a wheelchair is ordered as a Foot Release or a Hand Release, it CANNOT be retrofitted in the field to accept the other Tilting function. A new wheelchair must be ordered.

Item Number	Note	Part Number	Description	Quantity Per	
				Package	Assembly
1	A	1142080	NLA - Kit, Tilt Hardware	1	1
2			Bushing, Flange	1	8
3			NLA - Screw, Shoulder Hex Socket Head (5/16" x 1-3/4", 1/4-20)	1	4
4			Screw, Shoulder Hex Socket Head (3/8 x 1-3/4", 5/16-18)	1	2
5			Plate, Tilt Outside	1	2
6			Roller, Rear	1	4
7			Stop, Tilt, Black	1	2
7			Screw, Socket Set Cup Point (1/4-28 x 1/2")	1	2
8			NLA - Screw, Socket Head (1/4-28 x 1/2")	1	4
9			NLA - Upstop, Roller	1	4
10			Bushing (1/4 x 5/16 x 3/16")	1	4
11			Plate, Tilt Inside	1	2
12			Locknut (1/4-20)	1	4
13			Locknut (5/16-18)	1	4
14			Locknut (1/4-20)	1	2
15			NLA - Bushing, Nylon (1/4 x 3/8 x 1-1/4")	1	2
16			Roller, Nylon, Black	1	2
17			Screw, Socket Button Head (5/16-18 x 2")	1	2
18			Screw, Socket Button Head (1/4-20 x 1-7/8")	1	2
19			Bushing, Steel (5/16 x 27/64 x 1-1/4")	1	2
20			Washer, Nylon (1/2 x 3/4 x 3/32")	1	2
21			Washer, Nylon (3/8 x 3/4 x 1/16")	1	2

NOTE: A - Includes items 2-21. Includes hardware for right and left sides.