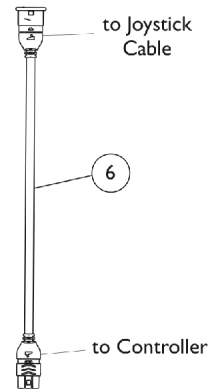
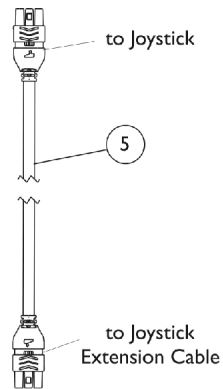
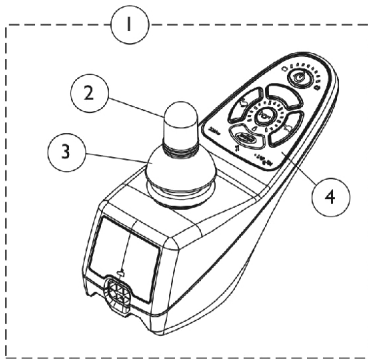


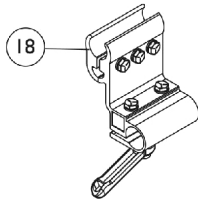
MK5 SPJ+ Joystick and Mounting Hardware

Introduced 8/09/05

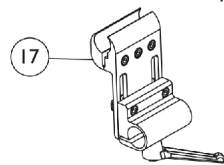


Joystick Cable

Joystick Extension Cable

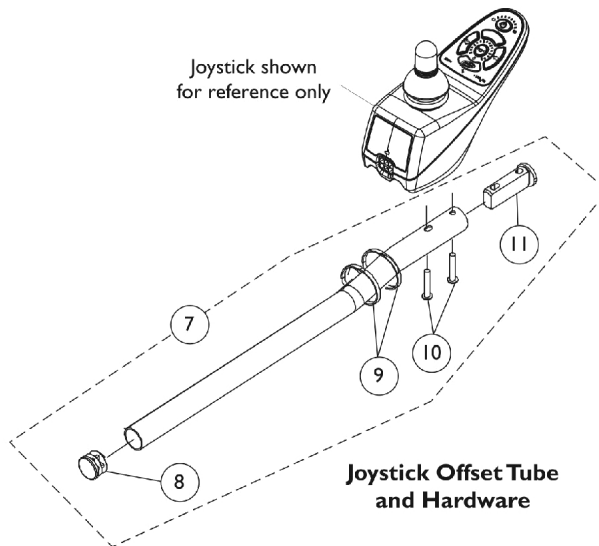


**ASBA Seat, Fixed Height
Joystick Offset Tube
Clamp Assembly**

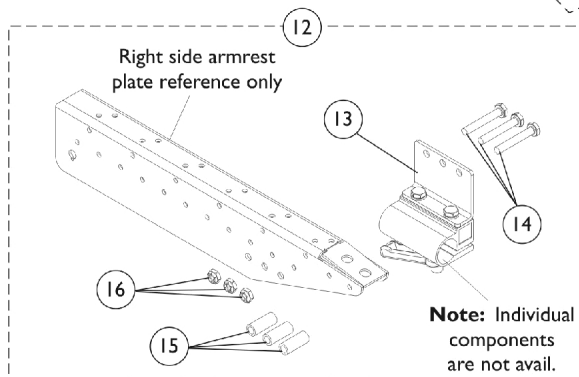


**ASBA Seat, Adjustable Height
Joystick Offset Tube
Clamp Assembly**

Individual components
are not available



**Joystick Offset Tube
and Hardware**



**Van Seat Joystick Offset Tube
Mounting Hardware**

Note: Individual
components
are not avail.

MK5 SPJ+ Joystick and Mounting Hardware

Introduced 8/09/05

Item Number	Note	Part Number	Description	Quantity Per	
				Package	Assembly
1	A,G	1127291	Joystick, SPJ+	1	1
2		1040217	Knob, Joystick Rubber, Black	1	1
3		1040218	Skirt, Joystick Rubber, Black	1	1
4		1165094	Kit, Overlay, SPJ+ Joystick (MK5/MK6)	1	1
			NLA - Overlay, SPJ+ Joystick	1	1
			Instruction Sheet, MK5/MK6 Overlay	1	1
5		1127293	Cable, Joystick SPJ+	1	1
6		1116404	Cable, Joystick Extension	1	1
7	B	1093069	Kit, 1/2" Offset Joystick Tube with Hardware	1	1
8		1027095	Plug Button, Black (7/8")	1	1
9		1095502-NLA	NLA - Package, Tie Wrap (11-1/2" L)	10	1
10		1025714	Screw, Phillips Pan Head (#10-32 x 1-1/8")	1	2
11		1093063	Spacer, Joystick Tube, Black	1	1
7	E	1161733	Kit, 2" Offset Joystick Tube w/ Hardware	1	1
8			Plug Button, Black (7/8")	1	1
9			Tie Wrap (11-1/2" L)	1	2
10			Screw, Phillips Pan Head (#10-32 x 1-1/8")	1	2
10			Screw, Phillips Pan Head (M5 x .8 x 30mm)	1	2
11			Spacer, Joystick Tube, Black	1	1
			Tube, Joystick Offset (2")	1	1
12	C	1115000	Kit, Joystick Tube Mounting Hardware - Captain Seat	1	1
13		1105049	Clamp Assembly, Fixed Height, Captain/ Van Seat	1	1
14		1037610	Screw, Hex Head (1/4-20 x 1-5/8")	1	3
15		1087219	Spacer (1/4 x 3/8 x 1")	1	3
16		1025195	Locknut (1/4-20)	1	3
17	F	1139422	Clamp, Height Adjustable Joystick Tube (ARM250)	1	1
18		1093071	Clamp, Fixed Height Joystick Tube	1	1
	D	1006270	Extension, Joystick, "T" Style (1560) (4" W x 5-1/2" L)	1	1
	D	1006271	Extension, Joystick, Straight Style (1561) (1/2" W x 5" L)	1	1
NOTE: A - Includes Joystick plus items 2 thru 4. B - Used on A.S.B.A. seats. Includes Joystick Tube plus items 8 thru 11. Kit includes Standard (#10-32) and Metric (M5). Customer selects the screw that applies to their application. C - Includes items 13 thru 16. D - Not Shown. E - Used on Van seats. Includes Joystick Tube plus items 8 thru 11. Kit contains Standard (#10-32) and Metric (M5) screws. Customer selects screw that applies to their application. F - Introduced as an option (ARM250) and can be used to replace a Fixed Height Joystick Clamp. G - Before replacing your joystick, verify with Invacare Technical Service Phone Support first to see if only a Joystick Overlay Kit is needed					