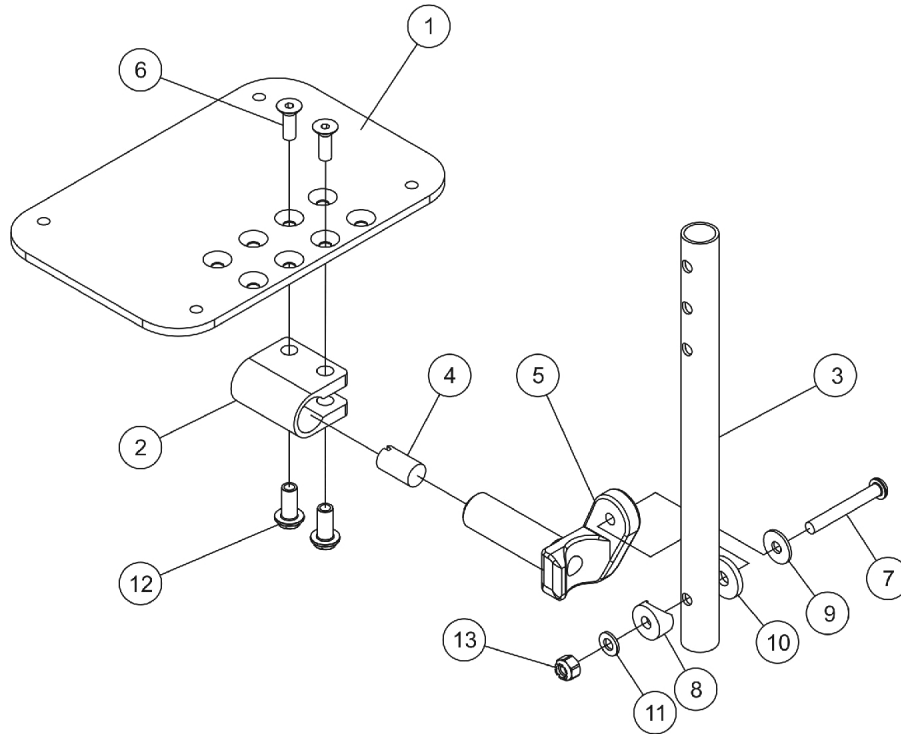


AT5543 Adjustable Angle Footplate Assemblies PHW93

Heel Loops are not included. See footrest and legrest accessories.
For complete pivot/slide tube and footplate assemblies, see Front Riggings Reference charts.



AT5543 Adjustable Angle Footplate Assemblies PHW93

Heel Loops are not included. See footrest and legrest accessories.

For complete pivot/slide tube and footplate assemblies, see Front Riggings Reference charts.

| Item Number | Note | Part Number | Description | Quantity Per | |
|-------------|------|-------------|---|--------------|----------|
| | | | | Package | Assembly |
| 1 | A | 1113574 | Footplate, Adjustable Angle, Extra Large, Black (6-1/4" W x 8" L) | 1 | 1 |
| 2 | | 1058517 | Clamp, Footplate | 1 | 1 |
| 3 | | 1057855 | Tube, Pivot and Slide, Straight, Steel, Black (9-7/8" L) | 1 | 1 |
| 3 | | 1057856 | Tube, Pivot/Slide, Straight, Steel, Black (11-7/8" L) | 1 | 1 |
| 4 | | 1048816 | Screw, Nylon Adjustment (1/2-13 x 7/8") | 1 | 1 |
| 5 | | 1052102 | Hinge, Footplate - Right | 1 | 1 |
| 5 | | 1052103 | Hinge, Footplate - Left | 1 | 1 |
| 6 | | 1029545 | Screw, Socket Flat Head (1/4-20 x 3/4") | 1 | 2 |
| 7 | | 1022831 | Screw, Socket Button Head (1/4-20 x 1-7/8") | 1 | 1 |
| 8 | | 1025457 | Spacer, Coved (1/4 x 3/4 x 11/32") | 1 | 1 |
| 9 | | 1026900 | Washer (1/4 x 23/32 x 1/16") | 1 | 1 |
| 10 | | 1016301 | Washer, Nylon (5/16 x 7/8 x 1/8") | 1 | 1 |
| 11 | | 1026907 | Washer (1/4 x 1/2 x 1/16") | 1 | 1 |
| 12 | | 1082686 | Nut, Barrel, Hex Head (1/4-20 x 11/16") | 1 | 2 |
| 13 | | 1025736 | Locknut (1/4-20) | 1 | 1 |

NOTE: A - This footplate was revised 9/2/2008 with rounder corners and accessory holes changed from 8 to 4. Recommended to replace footplate in pairs to match sides.