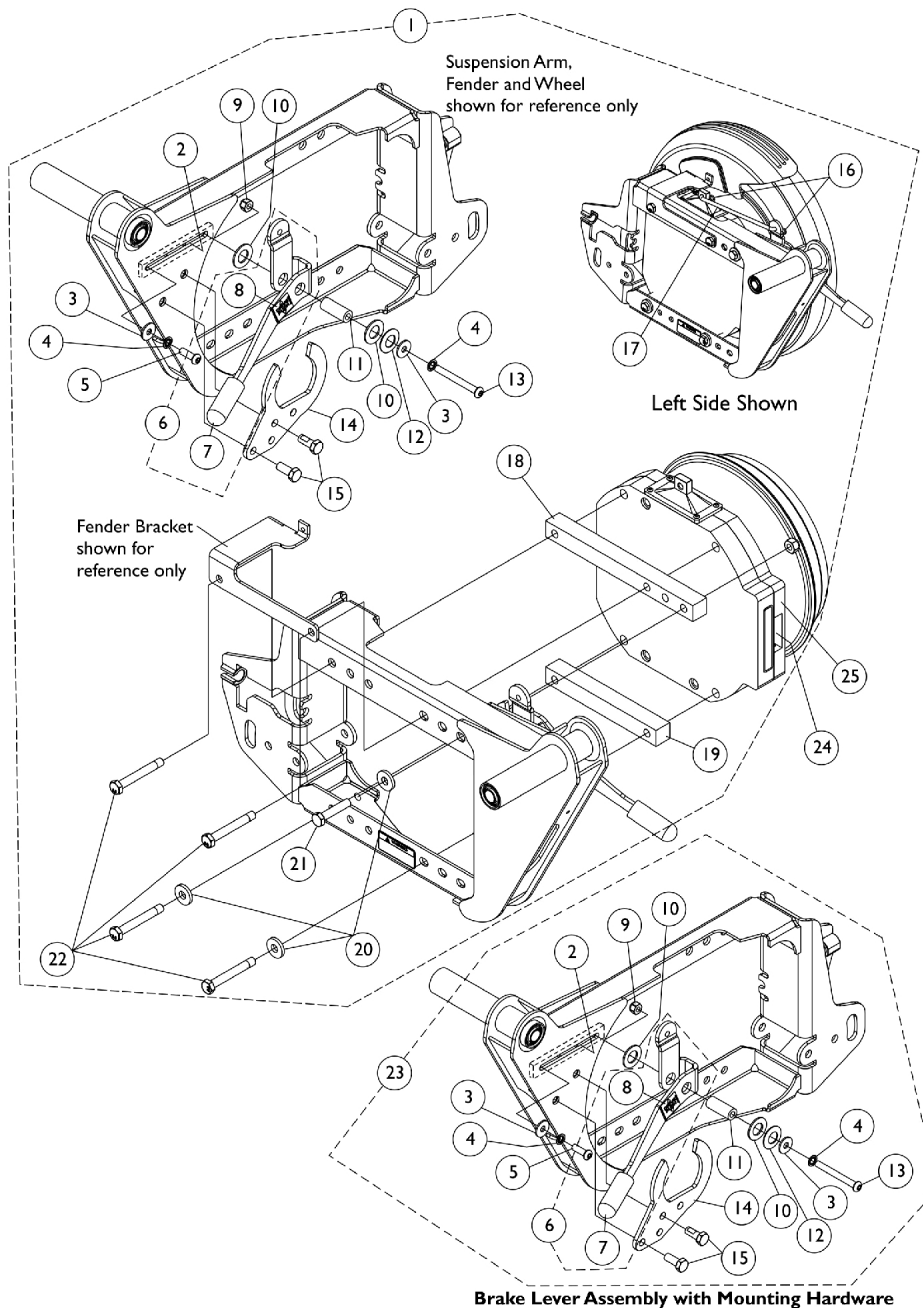


GB (TrueTrack) Heavy Duty Motors and Hardware

For Both MKIV Elec.'s Before 5/22/07 & MK6i After 5/21/07

NOTE: GB motors were not available with the Arrow (301-401HD) user weight selection until 1/26/04 when the TTHD GB motors covered all Arrow user weight limits STANDARD. **NOTE:** GB motors were not available with the Torque SP (301-351 TQHD) user weight selection until 1/26/04 when the user weight limit was raised to 400 Lbs.



GB (TrueTrack) Heavy Duty Motors and Hardware

For Both MKIV Elec.'s Before 5/22/07 & MK6i After 5/21/07

NOTE: GB motors were not available with the Arrow (301-401HD) user weight selection until 1/26/04 when the TTHD GB motors covered all Arrow user weight limits STANDARD. NOTE: GB motors were not available with the Torque SP (301-351 TQHD) user weight selection until 1/26/04 when the user weight limit was raised to 400 Lbs.

Item Number	Note	Part Number	Description	Quantity Per	
				Package	Assembly
1	A,B,B1	1116697-NLA	NLA - Kit, GB Heavy Duty Motor Mounting Hardware - Right	1	1
2			NLA - Plate, Lever	1	1
3			Washer (1/4 x 23/32 x 1/16")	1	2
4			Lockwasher (1/4 x 15/32 x 1/64")	1	2
5			Screw, Socket Button (1/4-20 x 3/4")	1	1
6			NLA - Brake Lever Assembly - Right	1	1
9			Locknut (1/4-20)	1	1
10			NLA - Washer, Nylon (35/64 x 1 x 1/16")	1	2
11			NLA - Insert, Lever	1	1
12			Washer, Belleville (1/2 x 1 x 1/32")	1	1
13			Screw, Socket Button Head (1/4-20X2-1/4")	1	1
14			Plate, Stop	1	1
15			Screw, Hex Head w/ Patch (5/16-18 x 3/4")	1	2
16			NLA - Cotter, Locking Bow-Tie (1/4" Shaft)	1	2
17			Linkage, Rod	1	1
18			NLA - Spacer, Top, Black, GB Motor	1	1
19			NLA - Spacer, Bottom, Black, GB Motor	1	1
20			Washer, Flat (21/64 x 53/64 x 7/64")	1	3
21			NLA - Screw, Hex Head (5/16-18 x 1-1/2")	1	1
22			NLA - Screw, Hex Head w/ Patch (M8 x 1.25 x 60mm)	1	4
			Kit, GB HD Controller Gasket Connector	1	1
1	A,B,B1		1116698-NLA	NLA - Kit, GB Heavy Duty Motor Mounting Hardware - Left	1
2		NLA - Plate, Lever		1	1
3		Washer (1/4 x 23/32 x 1/16")		1	2
4		Lockwasher (1/4 x 15/32 x 1/64")		1	2
5		Screw, Socket Button (1/4-20 x 3/4")		1	1
6		NLA - Brake Lever Assembly - Left		1	1
9		Locknut (1/4-20)		1	1
10		NLA - Washer, Nylon (35/64 x 1 x 1/16")		1	2
11		NLA - Insert, Lever		1	1
12		Washer, Belleville (1/2 x 1 x 1/32")		1	1
13		Screw, Socket Button Head (1/4-20X2-1/4")		1	1
14		Plate, Stop		1	1
15		Screw, Hex Head w/ Patch (5/16-18 x 3/4")		1	2
16		NLA - Cotter, Locking Bow-Tie (1/4" Shaft)	1	2	
17		Linkage, Rod	1	1	
18		NLA - Spacer, Top, Black, GB Motor	1	1	
19		NLA - Spacer, Bottom, Black, GB Motor	1	1	
20		Washer, Flat (21/64 x 53/64 x 7/64")	1	3	
21		NLA - Screw, Hex Head (5/16-18 x 1-1/2")	1	1	

GB (TrueTrack) Heavy Duty Motors and Hardware

For Both MKIV Elec.'s Before 5/22/07 & MK6i After 5/21/07

NOTE: GB motors were not available with the Arrow (301-401HD) user weight selection until 1/26/04 when the TTHD GB motors covered all Arrow user weight limits STANDARD. NOTE: GB motors were not available with the Torque SP (301-351 TQHD) user weight selection until 1/26/04 when the user weight limit was raised to 400 Lbs.

Item Number	Note	Part Number	Description	Quantity Per	
				Package	Assembly
22			NLA - Screw, Hex Head w/ Patch (M8 x 1.25 x 60mm)	1	4
			Kit, GB HD Controller Gasket Connector	1	1
23	B,B1,I	1153519-NLA	NLA - Kit, Brake Lever Assembly with Mounting Hardware - Right	1	1
2			NLA - Plate, Lever	1	1
3			Washer (1/4 x 23/32 x 1/16")	1	2
4			Lockwasher (1/4 x 15/32 x 1/64")	1	2
5			Screw, Socket Button (1/4-20 x 3/4")	1	1
6			NLA - Brake Lever Assembly - Right	1	1
9			Locknut (1/4-20)	1	1
10			NLA - Washer, Nylon (35/64 x 1 x 1/16")	1	2
11			NLA - Insert, Lever	1	1
12			Washer, Belleville (1/2 x 1 x 1/32")	1	1
13			Screw, Socket Button Head (1/4-20X2-1/4")	1	1
14			Plate, Stop	1	1
15			Screw, Hex Head w/ Patch (5/16-18 x 3/4")	1	2
23	B,B1,I	1153520-NLA	NLA - Kit, Brake Lever Assembly with Mounting Hardware - Left	1	1
2			NLA - Plate, Lever	1	1
3			Washer (1/4 x 23/32 x 1/16")	1	2
4			Lockwasher (1/4 x 15/32 x 1/64")	1	2
5			Screw, Socket Button (1/4-20 x 3/4")	1	1
6			NLA - Brake Lever Assembly - Left	1	1
9			Locknut (1/4-20)	1	1
10			NLA - Washer, Nylon (35/64 x 1 x 1/16")	1	2
11			NLA - Insert, Lever	1	1
12			Washer, Belleville (1/2 x 1 x 1/32")	1	1
13			Screw, Socket Button Head (1/4-20X2-1/4")	1	1
14			Plate, Stop	1	1
15			Screw, Hex Head w/ Patch (5/16-18 x 3/4")	1	2
7		1136024-NLA	NLA - Package, Rubber Tip, Wheel Lock Handle, Black	10	1
8		1114835-NLA	NLA - Decal, GB Drive/Push	1	1
24	C	1133188-NLA	NLA - Gasket, Motor Connector	1	1
25	D	See Chart	Item #25 New Motor - Date Application Reference Chart MKIV (Before 5/22/07)	1	1
25a	D	See Chart	Item #25a Warranty Replacement or Reconditioned Motor - Date Application Reference Chart MKIV (Before 5/22/07)	1	1
25b	D	See Chart	Item #25b New Motor - Date Application Reference Chart MK6i (After 5/21/07)	1	1

GB (TrueTrack) Heavy Duty Motors and Hardware

For Both MKIV Elec.'s Before 5/22/07 & MK6i After 5/21/07

NOTE: GB motors were not available with the Arrow (301-401HD) user weight selection until 1/26/04 when the TTHD GB motors covered all Arrow user weight limits STANDARD. NOTE: GB motors were not available with the Torque SP (301-351 TQHD) user weight selection until 1/26/04 when the user weight limit was raised to 400 Lbs.

Item Number	Note	Part Number	Description	Quantity Per	
				Package	Assembly
25c	D	See Chart	Item #25c Warranty Replacement or Reconditioned Motor - Date Application Reference Chart MK6i (After 5/21/07)	1	1
	F	See Chart	Suspension Arm Kits (Used for Chairs Manufactured Before 1/1/06 Only)	1	1
	E	1144925	Kit, Stand-Off Screw with Lockwasher	1	2
	F	1110531	Instruction Sheet, GB Motor Replacement For 3G Storm	1	1
	F,G,G1	1134214	Kit, GB HD Controller Gasket Connector	1	1
	F,H	1115476-NLA	NLA - Spring, Torsion - Right	1	1
	F,H	1115477-NLA	NLA - Spring, Torsion - Left	1	1

NOTE: A - Includes items 2-6, 9-22. Item #7 Rubber Tip and item #8 GB drive/Push Decal is included with item #6 Brake Lever Assembly. A Controller Gasket Connector Kit part #1134214 created 10/26/07 (not shown) will also be included.
 B - The brake release mechanism was revised 10/29/07 eliminating the Torsion Spring, adding a bellville washer and a stop plate to limit travel of the Brake Release Lever. If a customer requests just the Torsion Spring for chairs before 10/29/07, B1 - order part #1115476 RT or 1115477 LT otherwise order the Brake Lever and Mounting Hardware Kit item #23 that retrofits to all GB HD Motors in the field.
 C - Connector Gasket added to all GB HD Motors 5/16/06 and comes standard when a new motor is ordered. Gasket can be attached to all GB HD Motors in the field before 5/16/06 as well
 D - Refer to the "Motor Date Application Reference Charts" for selecting a motor
 E - Stand-Off Screw with Lockwasher kit used to secure the controller cable on the GB motors
 F - Not Shown
 G - Kit was created 10/26/07 and attaches to the controller motor cables. Includes 2 ea. GB HD Controller Gasket Connectors, 2 ea. Silicon Lubricant Packets, 1 ea. Instruction Sheet. Individual components are non-saleable.
 G1 - The kit can retrofit to existing GB HD controllers in the field
 H - Used for brake release mechanisms manufactured for chairs before 10/29/07. Torsion Spring no longer used after 10/28/07
 I - Includes items 2-6 and 9-15

Item #25 New Motor - Date Application Reference Chart MKIV (Before 5/22/07)

Model Number and Side	Before 2/6/03	2/6/03-1/25/04 and (2/6/03-3/14/04 For VA Gov't Orders)	1/26/04-5/21/07 and (3/15/04-5/21/07 For VA Gov't Orders)
Storm Arrow	TRUTK (Non-Heavy Duty) Standard	TRUTK (Non-Heavy Duty) Standard	TTHD (Heavy Duty) Standard
-Right	See Note See Note(s) E, E1	See Note See Note(s) E1, E	1153335-NLA See Note(s) A, C, A1
-Right w/ Wheel Lock	N/A	N/A	1153648-NLA See Note(s) B, B1
-Left	See Note See Note(s) E, E1	See Note See Note(s) E, E1	1153336-NLA See Note(s) D, A, A1
-Left w/ Wheel Lock	N/A	N/A	1153649-NLA See Note(s) B1, B
Storm Arrow	N/A	TTHD (Heavy Duty) Optional	N/A
-Right	N/A	1153335-NLA See Note(s) A1, A, C	N/A

GB (TrueTrack) Heavy Duty Motors and Hardware

For Both MKIV Elec.'s Before 5/22/07 & MK6i After 5/21/07

NOTE: GB motors were not available with the Arrow (301-401HD) user weight selection until 1/26/04 when the TTHD GB motors covered all Arrow user weight limits STANDARD. NOTE: GB motors were not available with the Torque SP (301-351 TQHD) user weight selection until 1/26/04 when the user weight limit was raised to 400 Lbs.

Item #25 New Motor - Date Application Reference Chart MKIV (Before 5/22/07)

Model Number and Side	Before 2/6/03	2/6/03-1/25/04 and (2/6/03-3/14/04 For VA Gov't Orders)	1/26/04-5/21/07 and (3/15/04-5/21/07 For VA Gov't Orders)
-Right w/ Wheel Lock	N/A	1153648-NLA See Note(s) B1, B	N/A
-Left	N/A	1153336-NLA See Note(s) A1, A, D	N/A
-Left w/ Wheel Lock	N/A	1153649-NLA See Note(s) B1, B	N/A
Storm RX	TRUTK (Non-Heavy Duty) Optional	TRUTK (Non-Heavy Duty) Optional	TRUTK (Heavy Duty) Optional
-Right	See Note See Note(s) E, E1	See Note See Note(s) E, E1	1153335-NLA See Note(s) C, A, A1
-Right w/ Wheel Lock	N/A	N/A	1153648-NLA See Note(s) B1, B
-Left	See Note See Note(s) E, E1	See Note See Note(s) E, E1	1153336-NLA See Note(s) D, A, A1
-Left w/ Wheel Lock	N/A	N/A	1153649-NLA See Note(s) B1, B
Torque SP	TRUTK (Non-Heavy Duty) Optional	TRUTK (Non-Heavy Duty) Optional	TRUTK (Heavy Duty) Optional
-Right	See Note See Note(s) E, E1	See Note See Note(s) E, E1	1153335-NLA See Note(s) C, A, A1
-Right w/ Wheel Lock	N/A	N/A	1153648-NLA See Note(s) B, B1
-Left	See Note See Note(s) E, E1	See Note See Note(s) E, E1	1153336-NLA See Note(s) D, A, A1
-Left w/ Wheel Lock	N/A	N/A	1153649-NLA See Note(s) B1, B

NOTE: A - Kit includes a GB HD Motor, Brake Lever Hardware and (Controller Gasket Connector kit). The brake release mechanism was revised 10/29/07 eliminating the torsion spring, adding a bellville washer and
A1 - stop plate to limit travel of the brake lever to prevent permanent damage to the motor. The Controller Gasket Connector was introduced 10/26/07 and attaches to the controller motor cables. Instruction sheets included also.
B - Kit includes a GB HD Motor, Brake Lever Hardware, (Controller Gasket Connector kit) and
B1 - a revised Wheel Lock with longer mounting screws. Revised Wheel Lock used for chairs made before 10/29/07 equipped with Wheel Locks. The new Stop Plate and revised Wheel Lock now share the same mounting holes on the Suspension Arm
C - For chairs manufactured before 1/1/06 a RT. Suspension Arm Kit part #1153679 is required in addition to a motor assembly. Refer to the Suspension Arm Kits chart
D - For chairs manufactured before 1/1/06 a LT. Suspension Arm Kit part #1153680 is required in addition to a motor assembly. Refer to the Suspension Arm Kits chart
E - Part is no longer available as a service part. The Customer will need to upgrade to Heavy Duty TrueTrack GB Motors. A new upgraded Base Only with MK6i Electronics must be ordered through the Equipment Configurator. If the Customer
E1 - has MKIV Electronics on the wheelchair with power seating then a whole new base and power seating is required.

NOTE: GB motors were not available with the Arrow (301-401HD) user weight selection until 1/26/04 when the TTHD GB motors covered all Arrow user weight limits STANDARD. NOTE: GB motors were not available with the Torque SP (301-351 TQHD) user weight selection until 1/26/04 when the user weight limit was raised to 400 Lbs.

GB (TrueTrack) Heavy Duty Motors and Hardware

For Both MKIV Elec.'s Before 5/22/07 & MK6i After 5/21/07

NOTE: GB motors were not available with the Arrow (301-401HD) user weight selection until 1/26/04 when the TTHD GB motors covered all Arrow user weight limits STANDARD. NOTE: GB motors were not available with the Torque SP (301-351 TQHD) user weight selection until 1/26/04 when the user weight limit was raised to 400 Lbs.

Item #25a Warranty Replacement or Reconditioned Motor - Date Application Reference Chart MKIV (Before 5/22/07)

Model Number and Side	Before 2/6/03	2/6/03-1/25/04 and (2/6/03-3/14/04 For VA Gov't Orders)	1/26/04-5/21/07 and (3/15/04-5/21/07 For VA Gov't Orders)
Storm Arrow	TRUTK (Non-Heavy Duty) Standard	TRUTK (Non-Heavy Duty) Standard	TTHD (Heavy Duty) Standard
-Right WARR RPLMT	N/A	N/A	1123235E-NLA See Note(s) F
-Right Reconditioned See Note(s) H	See Note See Note(s) H1, H	See Note See Note(s) H, H1	1153335E See Note(s) A, A1, C, E, G
-Right WARR RPLMT w/ Wheel Lock	N/A	N/A	1153648E-NLA See Note(s) E, B1, G, B
-Left WARR RPLMT	N/A	N/A	1123234E-NLA See Note(s) F
-Left Reconditioned	See Note See Note(s) H1, H	See Note See Note(s) H, H1	1153336E See Note(s) A, A1, D, E, G
-Left WARR RPLMT w/ Wheel Lock	N/A	N/A	1153649E-NLA See Note(s) G, B1, B, E
Storm Arrow	N/A	TTHD (Heavy Duty) Optional	N/A
-Right WARR RPLMT	N/A	1123235E-NLA See Note(s) F	N/A
-Right Reconditioned	N/A	1153335E See Note(s) A, G, A1, C, E	N/A
-Right WARR RPLMT w/ Wheel Lock	N/A	1153648E-NLA See Note(s) B, G, B1, E	N/A
-Left WARR RPLMT	N/A	1123234E-NLA See Note(s) F	N/A
-Left Reconditioned	N/A	1153336E See Note(s) A, G, A1, D, E	N/A
-Left WARR RPLMT w/ Wheel Lock	N/A	1153649E-NLA See Note(s) B, B1, E, G	N/A
Storm RX	TRUTK (Non-Heavy Duty) Optional	TRUTK (Non-Heavy Duty) Optional	TRUTK (Heavy Duty) Optional
-Right WARR RPLMT	N/A	N/A	1123235E-NLA See Note(s) F
-Right Reconditioned	See Note See Note(s) H1, H	See Note See Note(s) H, H1	1153335E See Note(s) A, A1, C, E, G
-Right WARR RPLMT w/ Wheel Lock	N/A	N/A	1153648E-NLA See Note(s) E, B1, G, B
-Left WARR RPLMT	N/A	N/A	1123234E-NLA See Note(s) F
-Left Reconditioned	See Note See Note(s) H1, H	See Note See Note(s) H, H1	1153336E See Note(s) A, A1, D, E, G
-Left WARR RPLMT w/ Wheel Lock	N/A	N/A	1153649E-NLA See Note(s) E, B1, G, B

GB (TrueTrack) Heavy Duty Motors and Hardware

For Both MKIV Elec.'s Before 5/22/07 & MK6i After 5/21/07

NOTE: GB motors were not available with the Arrow (301-401HD) user weight selection until 1/26/04 when the TTHD GB motors covered all Arrow user weight limits STANDARD. NOTE: GB motors were not available with the Torque SP (301-351 TQHD) user weight selection until 1/26/04 when the user weight limit was raised to 400 Lbs.

Item #25a Warranty Replacement or Reconditioned Motor - Date Application Reference Chart MKIV (Before 5/22/07)

Model Number and Side	Before 2/6/03	2/6/03-1/25/04 and (2/6/03-3/14/04 For VA Gov't Orders)	1/26/04-5/21/07 and (3/15/04-5/21/07 For VA Gov't Orders)
Torque SP	TRUTK (Non-Heavy Duty) Optional	TRUTK (Non-Heavy Duty) Optional	TRUTK (Heavy Duty) Optional
-Right WARR RPLMT	N/A	N/A	1123235E-NLA See Note(s) F
-Right Reconditioned	See Note See Note(s) H, H1	See Note See Note(s) H, H1	1153335E See Note(s) G, E, C, A, A1
-Right WARR RPLMT w/ Wheel Lock	N/A	N/A	1153648E-NLA See Note(s) G, E, B1, B
-Left WARR RPLMT	N/A	N/A	1123234E-NLA See Note(s) F
-Left Reconditioned	See Note See Note(s) H, H1	See Note See Note(s) H, H1	1153336E See Note(s) D, E, G, A, A1
-Left WARR RPLMT w/ Wheel Lock	N/A	N/A	1153649E-NLA See Note(s) E, B1, B, G

NOTE: A - Kit includes a GB HD Motor, Brake Lever Hardware and (Controller Gasket Connector kit). The brake release mechanism was revised 10/29/07 eliminating the torsion spring, adding a bellville washer and A1 - stop plate to limit travel of the brake lever to prevent permanent damage to the motor. The Controller Gasket Connector was introduced 10/26/07 and attaches to the controller motor cables. Instruction sheets included also.
 B - Kit includes a GB HD Motor, Brake Lever Hardware, (Controller Gasket Connector kit) and B1 - a revised Wheel Lock with longer mounting screws. Revised Wheel Lock used for chairs made before 10/29/07 equipped with Wheel Locks. The new Stop Plate and revised Wheel Lock now share the same mounting holes on the Suspension Arm
 C - For chairs manufactured before 1/1/06 a RT. Suspension Arm Kit part #1153679 is required in addition to a motor assembly. Refer to the Suspension Arm Kits chart
 D - For chairs manufactured before 1/1/06 a LT. Suspension Arm Kit part #1153680 is required in addition to a motor assembly. Refer to the Suspension Arm Kits chart
 E - Additional hardware is not required. Motors include a Controller Gasket Connector Kit and instruction sheets.
 F - For use on chairs with serial number series 07H and before.
 G - For use on chairs with serial number series 07I and after.
 H - Part is no longer available as a service part. the Customer will need to upgrade to Heavy Duty TrueTrack GB Motors. A new upgraded Base Only with MK6i Electronics must be ordered through the Equipment Configurator. If the Customer
 H1 - has MKIV Electronics on a wheelchair with power seating then a whole new base and power seating is required.

NOTE: GB motors were not available with the Arrow (301-401HD) user weight selection until 1/26/04 when the TTHD GB motors covered all Arrow user weight limits STANDARD. NOTE: GB motors were not available with the Torque SP (301-351 TQHD) user weight selection until 1/26/04 when the user weight limit was raised to 400 Lbs.

GB (TrueTrack) Heavy Duty Motors and Hardware

For Both MKIV Elec.'s Before 5/22/07 & MK6i After 5/21/07

NOTE: GB motors were not available with the Arrow (301-401HD) user weight selection until 1/26/04 when the TTHD GB motors covered all Arrow user weight limits STANDARD. NOTE: GB motors were not available with the Torque SP (301-351 TQHD) user weight selection until 1/26/04 when the user weight limit was raised to 400 Lbs.

Item #25b New Motor - Date Application Reference Chart MK6i (After 5/21/07)

Model and Side	Part Number
Storm Arrow	Storm Arrow (Std.) (300 Lb. & 400 Lb. Weight Limits)
-Right	1153335-NLA See Note(s) A1, A
-Right w/ Wheel Lock	1153648-NLA See Note(s) B1, B
-Left	1153336-NLA See Note(s) A1, A
-Left w/ Wheel Lock	1153649-NLA See Note(s) B1, B
Storm RX	Storm RX (Optional) (400 Lb. Weight Limit)
-Right	1153335-NLA See Note(s) A1, A
-Right w/ Wheel Lock	1153648-NLA See Note(s) B, B1
-Left	1153336-NLA See Note(s) A, A1
-Left w/ Wheel Lock	1153649-NLA See Note(s) B, B1
Torque SP/SE	(Optional) (300 Lb. Weight Limit)
-Right	1153335-NLA See Note(s) A1, A
-Right w/ Wheel Lock	1153648-NLA See Note(s) B, B1
-Left	1153336-NLA See Note(s) A1, A
-Left w/ Wheel Lock	1153649-NLA See Note(s) B, B1
Torque 3	(Optional) (300 Lb. Weight Limit)
-Right	1153335-NLA See Note(s) A, A1
-Left	1153336-NLA See Note(s) A, A1

NOTE: A - Kit includes a GB HD Motor, Brake Lever Hardware and (Controller Gasket Connector kit). The brake release mechanism was revised 10/29/07 eliminating the torsion spring, adding a bellville washer and
A1 - stop plate to limit travel of the brake lever to prevent permanent damage to the motor. The Controller Gasket Connector was introduced 10/26/07 and attaches to the controller motor cables. Instruction sheets included also.
B - Kit includes a GB HD Motor, Brake Lever Hardware, (Controller Gasket Connector kit) and
B1 - a revised Wheel Lock with longer mounting screws. Revised Wheel Lock used for chairs made before 10/29/07 equipped with Wheel Locks. The new Stop Plate and revised Wheel Lock now share the same mounting holes on the Suspension Arm

GB (TrueTrack) Heavy Duty Motors and Hardware

For Both MKIV Elec.'s Before 5/22/07 & MK6i After 5/21/07

NOTE: GB motors were not available with the Arrow (301-401HD) user weight selection until 1/26/04 when the TTHD GB motors covered all Arrow user weight limits STANDARD. NOTE: GB motors were not available with the Torque SP (301-351 TQHD) user weight selection until 1/26/04 when the user weight limit was raised to 400 Lbs.

Item #25c Warranty Replacement or Reconditioned Motor - Date Application Reference Chart MK6i (After 5/21/07)

Model and Side	Part Number
Storm Arrow	Storm Arrow (Std.) (300 Lb. & 400 Lb. Weight Limits)
-Right WARR RPLMT	1123235E-NLA See Note(s) D
-Right Reconditioned	1153335E See Note(s) A, A1, E, C
-Right WARR RPLMT w/ Wheel Lock	1153648E-NLA See Note(s) C, E, B, B1
-Left WARR RPLMT	1123234E-NLA See Note(s) D
-Left Reconditioned	1153336E See Note(s) A1, C, E, A
-Left WARR RPLMT w/ Wheel Lock	1153649E-NLA See Note(s) B, C, B1, E
Storm RX	Storm RX (Optional) (400 Lb. Weight Limit)
-Right WARR RPLMT	1123235E-NLA See Note(s) D
-Right Reconditioned	1153335E See Note(s) E, C, A1, A
-Right WARR RPLMT w/ Wheel Lock	1153648E-NLA See Note(s) B, E, B1, C
-Left WARR RPLMT	1123234E-NLA See Note(s) D
-Left Reconditioned	1153336E See Note(s) A, E, A1, C
-Left WARR RPLMT w/ Wheel Lock	1153649E-NLA See Note(s) B1, C, E, B
Torque SP/SE	(Optional) (300 Lb. Weight Limit)
-Right WARR RPLMT	1123235E-NLA See Note(s) D
-Right Reconditioned	1153335E See Note(s) A1, C, E, A
-Right WARR RPLMT w/ Wheel Lock	1153648E-NLA See Note(s) B, C, B1
-Left WARR RPLMT	1123234E-NLA See Note(s) D
-Left Reconditioned	1153336E See Note(s) A, E, A1, C
-Left WARR RPLMT w/ Wheel Lock	1153649E-NLA See Note(s) E, C, B, B1
Torque 3	(Optional) (300 Lb. Weight Limit)
-Right WARR RPLMT	1123235E-NLA See Note(s) D

GB (TrueTrack) Heavy Duty Motors and Hardware

For Both MKIV Elec.'s Before 5/22/07 & MK6i After 5/21/07

NOTE: GB motors were not available with the Arrow (301-401HD) user weight selection until 1/26/04 when the TTHD GB motors covered all Arrow user weight limits STANDARD. **NOTE:** GB motors were not available with the Torque SP (301-351 TQHD) user weight selection until 1/26/04 when the user weight limit was raised to 400 Lbs.

Item #25c Warranty Replacement or Reconditioned Motor - Date Application Reference Chart MK6i (After 5/21/07)

Model and Side	Part Number
-Right Reconditioned	1153335E See Note(s) E, C, A1, A
-Left WARR RPLMT	1123234E-NLA See Note(s) D
-Left Reconditioned	1153336E See Note(s) A, C, A1, E

NOTE: A - Kit includes a GB HD Motor, Brake Lever Hardware and (Controller Gasket Connector kit). The brake release mechanism was revised 10/29/07 eliminating the torsion spring, adding a bellville washer and
A1 - stop plate to limit travel of the brake lever to prevent permanent damage to the motor. The Controller Gasket Connector was introduced 10/26/07 and attaches to the controller motor cables. Instruction sheets included also.
B - Kit includes a GB HD Motor, Brake Lever Hardware, (Controller Gasket Connector kit) and
B1 - a revised Wheel Lock with longer mounting screws. Revised Wheel Lock used for chairs made before 10/29/07 equipped with Wheel Locks. The new Stop Plate and revised Wheel Lock now share the same mounting holes on the Suspension Arm
C - Additional hardware is not required. Motors include a Controller Gasket Connector Kit and instruction sheets.
D - For use on chairs with serial number series 07H and before.
E - For use on chairs with serial number series 07I and after.

GB (TrueTrack) Heavy Duty Motors and Hardware

For Both MKIV Elec.'s Before 5/22/07 & MK6i After 5/21/07

NOTE: GB motors were not available with the Arrow (301-401HD) user weight selection until 1/26/04 when the TTHD GB motors covered all Arrow user weight limits STANDARD. NOTE: GB motors were not available with the Torque SP (301-351 TQHD) user weight selection until 1/26/04 when the user weight limit was raised to 400 Lbs.

Suspension Arm and Hardware Kits

Suspension Arm Kits are ordered in "addition" to Motor Kit part numbers 1153335, 1153335E, 1153336 or 1153336E for chairs manufactured before 1/1/06

Side	Part Number
-Right	1153679-NLA See Note(s) A
-Left	1153680 See Note(s) A

NOTE: A - Suspension Arm Kits will include the suspension arm, instruction sheet and mounting hardware for the motor, wheel, brake lever and fender. The new suspension arm will have the holes necessary to accept the brake lever stop plate