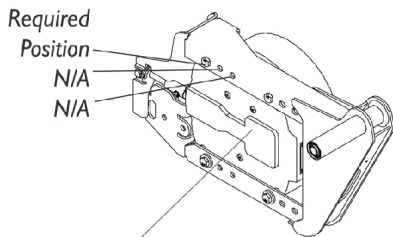
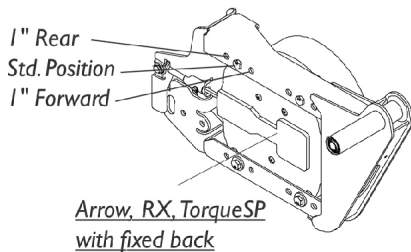
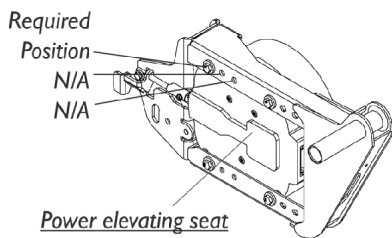


GB (TrueTrack) Non-Heavy Duty Motors and Hardware For MKIV Electronics Only

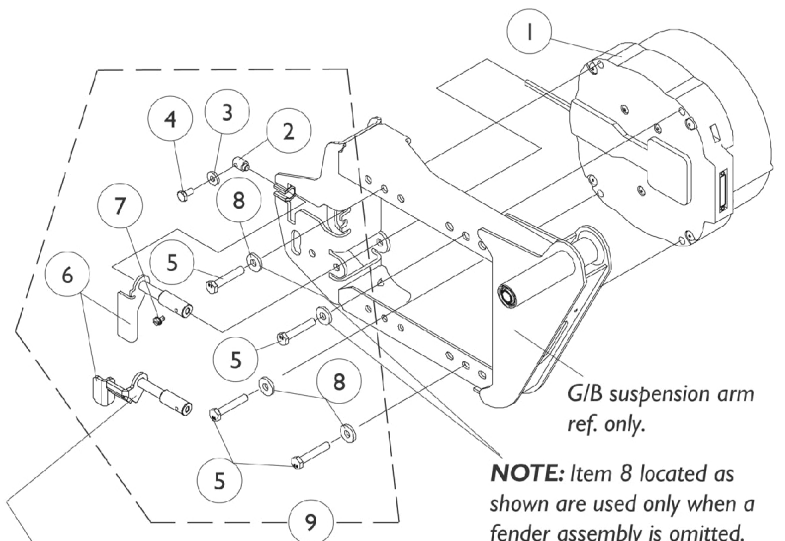
NOTE: GB motors were not available with the Arrow (301-401HD) user weight selection until 1/26/04 when the TTHD GB motors covered all Arrow user weight limits STANDARD. **NOTE:** GB motors were not available with the Torque SP (301-351 TQHD) user weight selection until 1/26/04 when the user weight limit was raised to 400 Lbs.



Arrow, RX, TorqueSP with manual recline, power tilt/recline seating systems or high back captain seats.

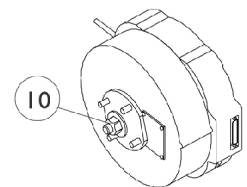


Motor Mounting Locations



NOTE: This brake release handle is used when a power elevating seat is present.

NOTE: Item 8 located as shown are used only when a fender assembly is omitted.



GB (TrueTrack) Non-Heavy Duty Motors and Hardware For MKIV Electronics Only

NOTE: GB motors were not available with the Arrow (301-401HD) user weight selection until 1/26/04 when the TTHD GB motors covered all Arrow user weight limits STANDARD. NOTE: GB motors were not available with the Torque SP (301-351 TQHD) user weight selection until 1/26/04 when the user weight limit was raised to 400 Lbs.

Item Number	Note	Part Number	Description	Quantity Per	
				Package	Assembly
1	E,E1	See Note	See Footnote	1	1
1a	D	See Chart	Item #1a New Motor - Date Application Reference Chart	1	1
1b	D	See Chart	Item #1b Warranty Replacement or Reconditioned Motor - Date Application Reference Chart	1	1
2		1078213-NLA	NLA - Pin, Alignment, Black	1	1
3		1018739	Washer (1/4 x 5/8 x 3/32")	1	1
4		1078214	Screw, Hex Head w/ Patch (1/4-20 x 1/2")	1	1
5		1085633-NLA	NLA - Screw, Hex Head w/ Patch (M8 x 1.25 x 45mm)	1	4
6		1105600-NLA	NLA - Handle, Brake Release, Black - Right	1	1
6		1105601-NLA	NLA - Handle, Brake Release, Black - Left	1	1
6		1106532-NLA	NLA - Handle, Brake Release, Black - Right (Power Elevating Seat Only)	1	1
6		1106533-NLA	NLA - Handle, Brake Release, Black - Left (Power Elevating Seat Only)	1	1
7		1078228-NLA	NLA - Screw, Slotted Hex Head w/ Patch (#10-32 x 5/16")	1	1
8		1079247	Washer, Flat (21/64 x 53/64 x 7/64")	1	4
9		1104872-NLA	NLA - Hardware, Motor Mounting - Right	1	1
9		1104873-NLA	NLA - Hardware, Motor Mounting - Left	1	1
9		1108769-NLA	NLA - Hardware, Motor Mounting - Right (Power Elevating Seat Only)	1	1
9		1108770-NLA	NLA - Hardware, Motor Mounting - Left (Power Elevating Seat Only)	1	1
10	B	1112955-NLA	NLA - Kit, Repair, GB Motor, Anti-Rattle with Instruction Sheet	2	1
		1144925	Kit, Stand-Off Screw with Lockwasher	1	2
	C	1112828	Instruction Sheet, GB Motor Anti-Rattle Repair Kit	1	1

NOTE: B - Service Kit for two motors include 2 each hex head nuts, washers, hub keys and O-rings. Individual components are not available.
 C - not shown
 D - Refer to the "Motor Date Application Reference Chart" for selecting motor
 E - Part is no longer available as a service part. The Customer will need to upgrade to Heavy Duty TrueTrack GB Motors. If the Customer
 E1 - has MKIV Electronics on the wheelchair with power seating then a whole new base and power seating is required.

Item #1a New Motor - Date Application Reference Chart

Model Number and Side	Before 2/6/03	2/6/03-1/25/04 and (2/6/03-3/14/04 For VA Gov't Orders)	1/26/04-5/21/07 and (3/15/04-5/21/07 For VA Gov't Orders)
Storm Arrow	TRUTK (Non-Heavy Duty) Standard	TRUTK (Non-Heavy Duty) Standard	TTHD (Heavy Duty) Standard

GB (TrueTrack) Non-Heavy Duty Motors and Hardware For MKIV Electronics Only

NOTE: GB motors were not available with the Arrow (301-401HD) user weight selection until 1/26/04 when the TTHD GB motors covered all Arrow user weight limits STANDARD. NOTE: GB motors were not available with the Torque SP (301-351 TQHD) user weight selection until 1/26/04 when the user weight limit was raised to 400 Lbs.

Item #1a New Motor - Date Application Reference Chart

Model Number and Side	Before 2/6/03	2/6/03-1/25/04 and (2/6/03-3/14/04 For VA Gov't Orders)	1/26/04-5/21/07 and (3/15/04-5/21/07 For VA Gov't Orders)
-Right	See Note See Note(s) E1, E	See Note See Note(s) E1, E	1153335-NLA See Note(s) C, A, A1
-Right w/ Wheel Lock	N/A	N/A	1153648-NLA See Note(s) B1, B
-Left	See Note See Note(s) E, E1	See Note See Note(s) E, E1	1153336-NLA See Note(s) D, A1, A
-Left w/ Wheel Lock	N/A	N/A	1153649-NLA See Note(s) B, B1
Storm Arrow	N/A	TTHD (Heavy Duty) Optional	N/A
-Right	N/A	1153335-NLA See Note(s) A, A1, C	N/A
-Right w/ Wheel Lock	N/A	1153648-NLA See Note(s) B, B1	N/A
-Left	N/A	1153336-NLA See Note(s) A, A1, D	N/A
-Left w/ Wheel Lock	N/A	1153649-NLA See Note(s) B, B1	N/A
Storm RX	TRUTK (Non-Heavy Duty) Optional	TRUTK (Non-Heavy Duty) Optional	TRUTK (Heavy Duty) Optional
-Right	See Note See Note(s) E, E1	See Note See Note(s) E, E1	1153335-NLA See Note(s) A, A1, C
-Right w/ Wheel Lock	N/A	N/A	1153648-NLA See Note(s) B, B1
-Left	See Note See Note(s) E, E1	See Note See Note(s) E1, E	1153336-NLA See Note(s) A1, A, D
-Left w/ Wheel Lock	N/A	N/A	1153649-NLA See Note(s) B1, B
Torque SP	TRUTK (Non-Heavy Duty) Optional	TRUTK (Non-Heavy Duty) Optional	TRUTK (Heavy Duty) Optional
-Right	See Note See Note(s) E, E1	See Note See Note(s) E1, E	1153335-NLA See Note(s) A1, A, C
-Right w/ Wheel Lock	N/A	N/A	1153648-NLA See Note(s) B, B1
-Left	See Note See Note(s) E, E1	See Note See Note(s) E, E1	1153336-NLA See Note(s) D, A1, A
-Left w/ Wheel Lock	N/A	N/A	1153649-NLA See Note(s) B, B1

GB (TrueTrack) Non-Heavy Duty Motors and Hardware For MKIV Electronics Only

NOTE: GB motors were not available with the Arrow (301-401HD) user weight selection until 1/26/04 when the TTHD GB motors covered all Arrow user weight limits STANDARD. NOTE: GB motors were not available with the Torque SP (301-351 TQHD) user weight selection until 1/26/04 when the user weight limit was raised to 400 Lbs.

NOTE: A - Kit includes a GB HD Motor, Brake Lever Hardware and (Controller Motor Gasket Connector kit). The brake release mechanism was revised 10/29/07 eliminating the torsion spring, adding a bellville washer and
A1 - stop plate to limit travel of the brake lever to prevent permanent damage to the motor. The Motor Gasket Connector was introduced 10/26/07 and attaches to the controller motor cables. Instruction sheets included also.
B - Kit includes a GB HD Motor, Brake Lever Hardware, (Controller Motor Gasket Connector kit) and
B1 - a revised Wheel Lock with longer mounting screws. Revised Wheel Lock used for chairs made before 10/29/07 equipped with Wheel Locks. The new Stop Plate and revised Wheel Lock now share the same mounting holes on the Suspension Arm
C - For chairs manufactured before 1/1/06 a RT. Suspension Arm Kit part #1153679 is required in addition to a motor assembly. Refer to the Suspension Arm Kits chart
D - For chairs manufactured before 1/1/06 a LT. Suspension Arm Kit part #1153680 is required in addition to a motor assembly. Refer to the Suspension Arm Kits chart
E - Part is no longer available as a service part. The Customer will need to upgrade to Heavy Duty TrueTrack GB Motors. A new upgraded Base Only with MK6i Electronics must be ordered through the Equipment Configurator. If the Customer
E1 - has MKIV Electronics on the wheelchair with power seating then a whole new base and power seating is required.

NOTE: GB motors were not available with the Arrow (301-401HD) user weight selection until 1/26/04 when the TTHD GB motors covered all Arrow user weight limits STANDARD. NOTE: GB motors were not available with the Torque SP (301-351 TQHD) user weight selection until 1/26/04 when the user weight limit was raised to 400 Lbs.

GB (TrueTrack) Non-Heavy Duty Motors and Hardware For MKIV Electronics Only

NOTE: GB motors were not available with the Arrow (301-401HD) user weight selection until 1/26/04 when the TTHD GB motors covered all Arrow user weight limits STANDARD. NOTE: GB motors were not available with the Torque SP (301-351 TQHD) user weight selection until 1/26/04 when the user weight limit was raised to 400 Lbs.

Item #1b Warranty Replacement or Reconditioned Motor - Date Application Reference Chart

Model Number and Side	Before 2/6/03	2/6/03-1/25/04 and (2/6/03-3/14/04 For VA Gov't Orders)	1/26/04-5/21/07 and (3/15/04-5/21/07 For VA Gov't Orders)
Storm Arrow	TRUTK (Non-Heavy Duty) Standard	TRUTK (Non-Heavy Duty) Standard	TTHD (Heavy Duty) Standard
-Right WARR RPLMT	N/A	N/A	1123235E-NLA See Note(s) F
-Right Reconditioned	See Note See Note(s) H1, H	See Note See Note(s) H, H1	1153335E See Note(s) G, E, C, A1, A
-Right WARR RPLMT w/ Wheel Lock	N/A	N/A	1153648E-NLA See Note(s) G, B1, E, B
-Left WARR RPLMT	N/A	N/A	1123234E-NLA See Note(s) F
-Left Reconditioned	See Note See Note(s) H1, H	See Note See Note(s) H1, H	1153336E See Note(s) A, A1, G, E, D
-Left WARR RPLMT w/ Wheel Lock	N/A	N/A	1153649E-NLA See Note(s) E, B1, G, B
Storm Arrow	N/A	TTHD (Heavy Duty) Optional	N/A
-Right WARR RPLMT	N/A	1123235E-NLA See Note(s) F	N/A
-Right Reconditioned	N/A	1153335E See Note(s) A, G, A1, C, E	N/A
-Right WARR RPLMT w/ Wheel Lock	N/A	1153648E-NLA See Note(s) G, B1, B, E	N/A
-Left WARR RPLMT	N/A	1123234E-NLA See Note(s) F	N/A
-Left Reconditioned	N/A	1153336E See Note(s) E, G, A1, A, D	N/A
-Left WARR RPLMT w/ Wheel Lock	N/A	1153649E-NLA See Note(s) B, G, B1, E	N/A
Storm RX	TRUTK (Non-Heavy Duty) Optional	TRUTK (Non-Heavy Duty) Optional	TRUTK (Heavy Duty) Optional
-Right WARR RPLMT	N/A	N/A	1123235E-NLA See Note(s) F
-Right Reconditioned	See Note See Note(s) H, H1	See Note See Note(s) H, H1	1153335E See Note(s) G, E, C, A1, A
-Right WARR RPLMT w/ Wheel Lock	N/A	N/A	1153648E-NLA See Note(s) B1, E, B, G
-Left WARR RPLMT	N/A	N/A	1123234E-NLA See Note(s) F
-Left Reconditioned	See Note See Note(s) H1, H	See Note See Note(s) H1, H	1153336E See Note(s) E, A, A1, G, D
-Left WARR RPLMT w/ Wheel Lock	N/A	N/A	1153649E-NLA See Note(s) G, B, B1, E

GB (TrueTrack) Non-Heavy Duty Motors and Hardware For MKIV Electronics Only

NOTE: GB motors were not available with the Arrow (301-401HD) user weight selection until 1/26/04 when the TTHD GB motors covered all Arrow user weight limits STANDARD. NOTE: GB motors were not available with the Torque SP (301-351 TQHD) user weight selection until 1/26/04 when the user weight limit was raised to 400 Lbs.

Item #1b Warranty Replacement or Reconditioned Motor - Date Application Reference Chart

Model Number and Side	Before 2/6/03	2/6/03-1/25/04 and (2/6/03-3/14/04 For VA Gov't Orders)	1/26/04-5/21/07 and (3/15/04-5/21/07 For VA Gov't Orders)
Torque SP	TRUTK (Non-Heavy Duty) Optional	TRUTK (Non-Heavy Duty) Optional	TRUTK (Heavy Duty) Optional
-Right WARR RPLMT	N/A	N/A	1123235E-NLA See Note(s) F
-Right Reconditioned	See Note See Note(s) H1, H	See Note See Note(s) H, H1	1153335E See Note(s) G, A1, E, C, A
-Right WARR RPLMT w/ Wheel Lock	N/A	N/A	1153648E-NLA See Note(s) B, G, B1, E
-Left WARR RPLMT	N/A	N/A	1123234E-NLA See Note(s) F
-Left Reconditioned	See Note See Note(s) H, H1	See Note See Note(s) H, H1	1153336E See Note(s) A1, E, D, G, A
-Left WARR RPLMT w/ Wheel Lock	N/A	N/A	1153649E-NLA See Note(s) B, G, E, B1

NOTE: A - Kit includes a GB HD Motor, Brake Lever Hardware and (Controller Motor Gasket Connector kit). The brake release mechanism was revised 10/29/07 eliminating the torsion spring, adding a bellville washer and A1 - stop plate to limit travel of the brake lever to prevent permanent damage to the motor. The Motor Gasket Connector was introduced 10/26/07 and attaches to the controller motor cables. Instruction sheets included also.
 B - Kit includes a GB HD Motor, Brake Lever Hardware, (Controller Motor Gasket Connector kit) and
 B1 - a revised Wheel Lock with longer mounting screws. Revised Wheel Lock used for chairs made before 10/29/07 equipped with Wheel Locks. The new Stop Plate and revised Wheel Lock now share the same mounting holes on the Suspension Arm
 C - For chairs manufactured before 1/1/06 a RT. Suspension Arm Kit part #1153679 is required in addition to a motor assembly. Refer to the Suspension Arm Kits chart
 D - For chairs manufactured before 1/1/06 a LT. Suspension Arm Kit part #1153680 is required in addition to a motor assembly. Refer to the Suspension Arm Kits chart
 E - Additional hardware is not required. Motors include a Controller Gasket Connector Kit and instruction sheets.
 F - For use on chairs with serial number series 07H and before.
 G - For use on chairs with serial number series 07I and after.
 H - Part is no longer available as a service part. The Customer will need to upgrade to Heavy Duty TrueTrack GB Motors. A new upgraded Base Only with MK6i Electronics must be ordered through the Equipment Configurator. If the Customer
 H1 - has MKIV Electronics on the wheelchair with power seating then a whole new base and power seating is required.

NOTE: GB motors were not available with the Arrow (301-401HD) user weight selection until 1/26/04 when the TTHD GB motors covered all Arrow user weight limits STANDARD. NOTE: GB motors were not available with the Torque SP (301-351 TQHD) user weight selection until 1/26/04 when the user weight limit was raised to 400 Lbs.