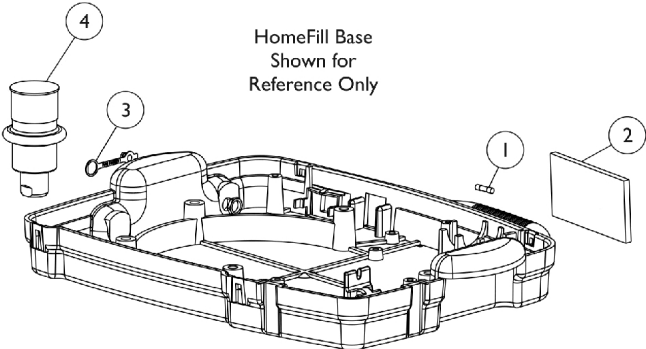
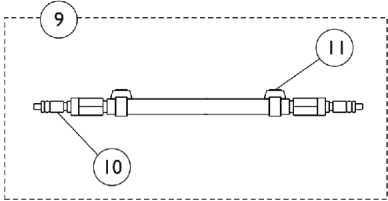


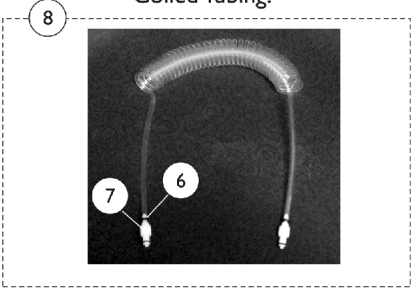
HomeFill Base and HomeFill Stand Components



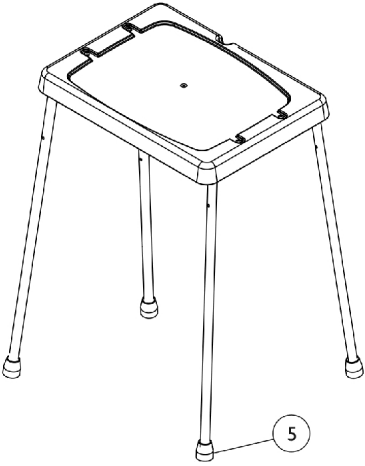
Use on units with
straight tubing.



Use on units with
Coiled Tubing.



HomeFill Stand
Shown for
Reference Only



HomeFill Base and HomeFill Stand Components

Item Number	Note	Part Number	Description	Quantity Per	
				Package	Assembly
1		1099820	Fuse (2 AMP)	1	1
2		2000489	Filter, Cabinet	1	1
3	C	1108211	Cap, End, Dust, Green	1	1
4	F	1127653-NLA	NLA - Dust Cover with Lanyard (1-1/2")	1	1
4	M,N	1156644-NLA	NLA - Dust Cover with Lanyard (1")	1	1
4	M	60103657	Kit, Cap, Connector Dust, HomeFill II (Pkg. of 10)	10	1
5	B,E	1086773-NLA	NLA - Tip, Rubber, Black (3/4" Tubing)	1	4
5	E	1128290-NLA	NLA - Package, Rubber Tip, Black (Fits 3/4" Tubing)	4	1
	A,D	1157640	Package, Fitting Cover	1	1
	A	1112949	Cord, Power	1	1
6	K	1006525	Tie Wrap (3-29/32" L)	1	2
7	K	1131392	Fitting, Straight Internal Valve (1/8")	1	1
8	G,I	1105177	Supply Line Assembly w/ Coiled Tubing (12 ft.)	1	1
	A,H	1072004	Pad, Non-Skid Adhesive Back	1	1
9	I,L	1145487	Supply Line Assembly w/ Straight Tubing (3-21/64 FT)	1	1
10	J	1145489	Package, Hose Fitting (1/4" Barb)	10	1
11	J	2001682	Tie Wrap (8" L)	1	2

NOTE: A - Not Shown.
 B - Item no longer available, see Part #1128290.
 C - Used for Homefill Interface Port.
 D - For use with Homefill Oxygen Cylinder.
 E - For use on IOH250 Invacare Homefill Stand.
 F - For use over Oxy Lock Coupler with 1-1/2" Diameter.
 G - Includes Coiled Tubing, Fittings and Tie Wraps.
 H - Use with Homefill Ready Rack.
 I - After 4/12/06, the tubing style has changed to a Coiled Tubing.
 J - Use with Supply Line Assembly "Before 4/13/06" with Straight Tubing.
 K - Use with Supply Line Assembly "After 4/12/06" with Coiled Tubing.
 L - Includes Straight Tubing, Fittings and Tie Wraps.
 M - For use over Oxy Lock Coupler with 1" Diameter.
 N - See item #4 60103657 as a replacement for part# 1156644.

NOTE: Please contact an Invacare Parts Specialist for replacement parts at 1-800-333-6900 ext. 3722.