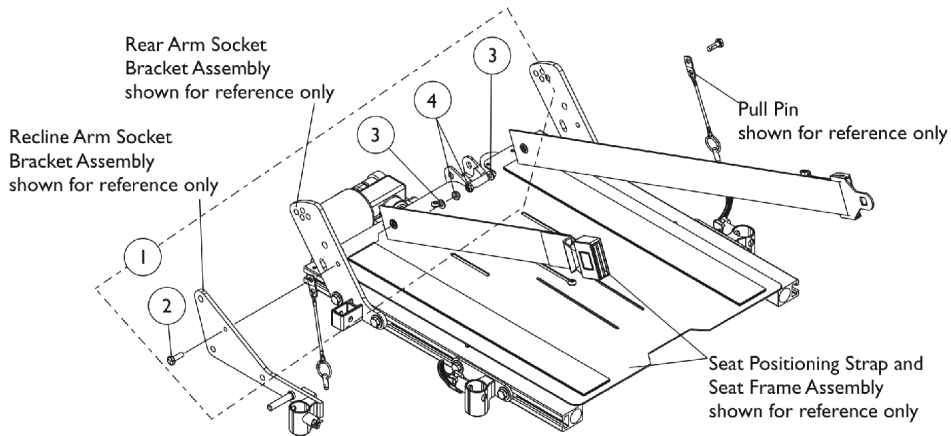
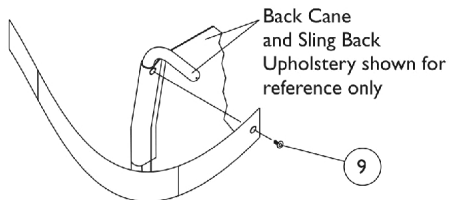


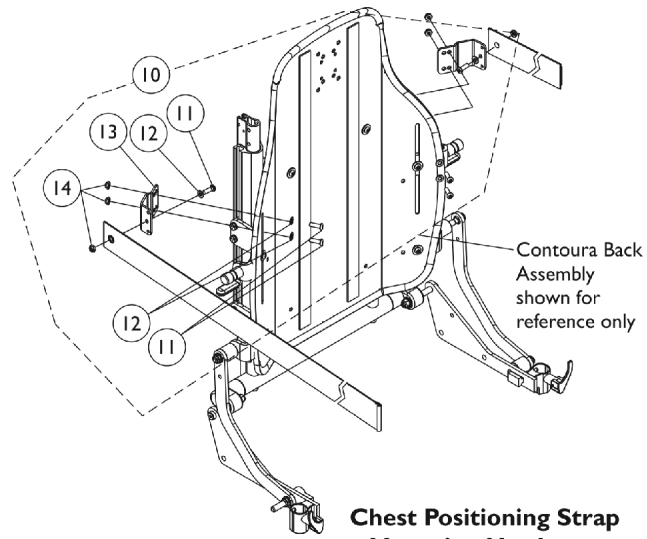
# Seat and Chest Positioning Straps Mounting Hardware



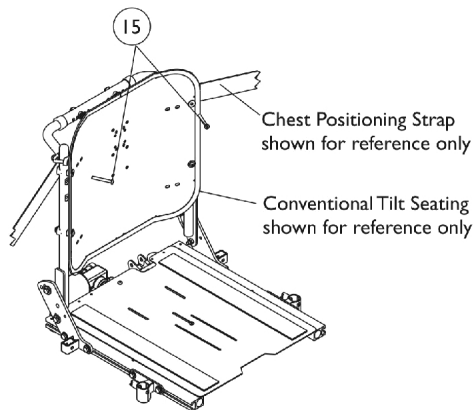
**Seat Positioning Strap Mounting Hardware  
(All Systems)**



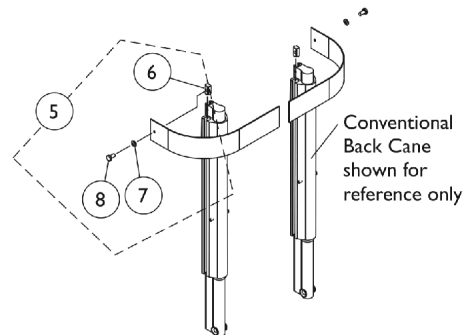
**Chest Positioning Strap Mounting Hardware  
(For ADJASBA w/ Sling Back Uph.,  
ABS & Metal Curved Back)**



**Chest Positioning Strap Mounting Hardware  
(For Contoura Seating)**



**Chest Positioning Strap Mounting Hardware  
(For Solid Straight Back Canes)**



**Chest Positioning Strap Mounting Hardware  
(For Conventional Recline)**

## Seat and Chest Positioning Straps Mounting Hardware

Item Number	Note	Part Number	Description	Quantity Per	
				Package	Assembly
1	A	1124385	Kit, Seat Positioning Strap Mounting Hardware (both LT & RT sides)	1	1
2			Screw, Hex Head w/ Patch (1/4-20 x 3/4")	1	2
3			Washer (1/4 x 1/2 x 1/16")	1	2
4			Locknut (1/4-20)	1	2
5	B	1090212	Kit, Chest Positioning Strap Mounting Hardware For Conventional Seating	1	1
6			T-Nut (1/4-20)	1	2
7			Washer (1/4 x 23/32 x 1/16")	1	2
8			Screw, Hex Head w/ Patch (1/4-20 x 1/2")	1	2
9	C	1026298	Package, Screw with Washer (#10 x 7/8") (Pair)	2	1
10	D	1125798	Kit, Chest Positioning Strap's Mounting Hardware For Contoura Seating (both LT & RT sides)	1	1
11			Screw, Socket Button (1/4-20 x 3/4")	1	6
12			Washer (1/4 x 1/2 x 1/16")	1	6
13			Bracket, Positioning Strap, Black	1	2
14			Locknut (1/4-20)	1	6
15	E	1128732-NLA	NLA - Package, Screw, Socket Button Head (1/4-20 x 2") (Pair)	2	1
NOTE: A - Includes items 2-4 B - Includes items 6-8 C - The back upholstery and chest positioning strap share the same mounting hardware D - Includes items 11-14 E - Used for mounting chest positioning straps to solid straight back canes					