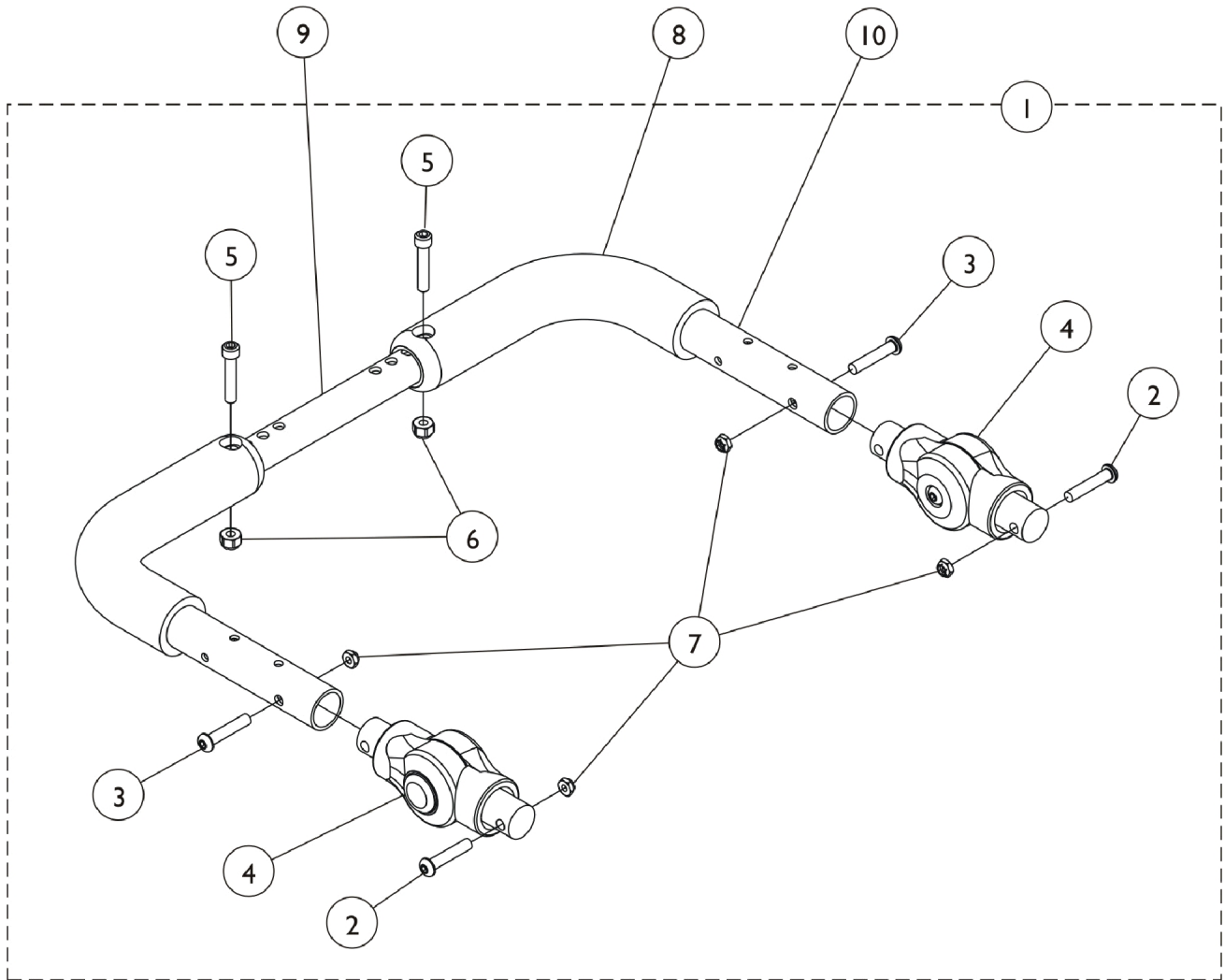


Adjustable Angle Stroller Handle - Adjustable Angle Outside Mount (After 5/29/08)



Adjustable Angle Stroller Handle - Adjustable Angle Outside Mount (After 5/29/08)

Item Number	Note	Part Number	Description	Quantity Per	
				Package	Assembly
1	A,B	1134190	Kit, Stroller Handle, Adjustable Angle - Outside Mount	1	1
2			Screw, Socket Button Head (1/4-28 x 1-1/4")	1	2
3			Screw, Socket Head (1/4-28 x 1-1/4")	1	2
4			Gear, Stroller Handle	1	2
5			Screw, Socket Head (1/4-28 x 1-1/4")	1	2
6			Locknut (1/4-28)	1	2
7			Locknut (1/4-28)	1	4
8		1127767	Grip, Foam (9")	1	2
9		See Chart	#8 Crossbrace Tube	1	1
10	D	1127789	Stroller Handle Assembly - Right/Left	1	2
	C	1161431	Package, Adjusting Button, Black	10	1

NOTE: A - Includes items 2-6.
 B - To order replacement Stroller Handle Gear Adjusting Buttons, order package part number 1161431.
 C - Not Shown.
 D - Includes item #7 Foam Grip also.

#8 Crossbrace Tube

12-16" Wide	14-18" Wide	16-20" Wide	18-22" Wide
1129473	1129474	1129475	1129476