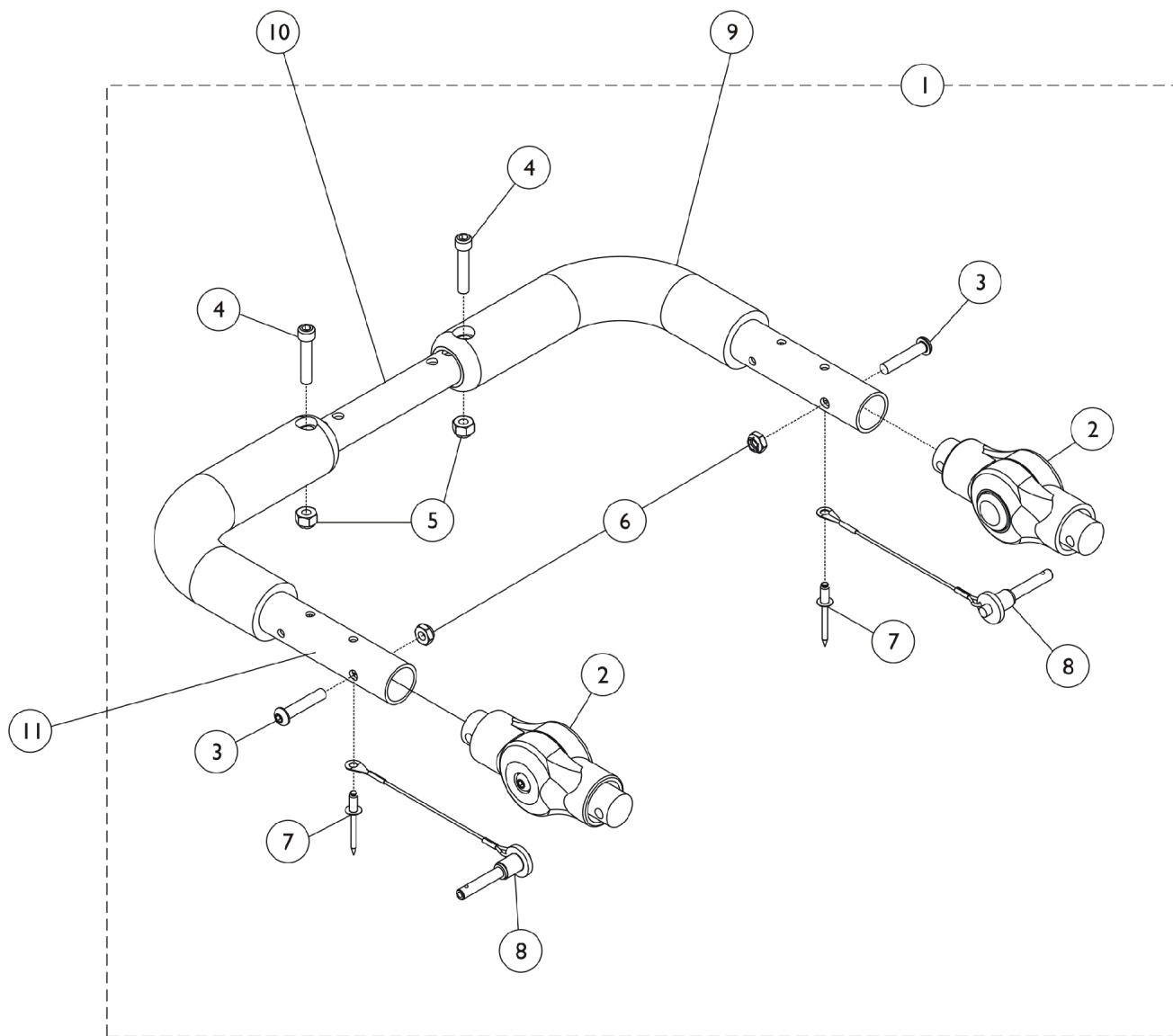


Adjustable Angle Stroller Handle - Rigid Inside Mount SPREE/COMPASS SPT (After 5/28/08)



Adjustable Angle Stroller Handle - Rigid Inside Mount SPREE/COMPASS SPT (After 5/28/08)

Item Number	Note	Part Number	Description	Quantity Per	
				Package	Assembly
1	A,B	1136695	Kit, Stroller Handle, Adjustable Angle - Rigid Inside Mount	1	1
2			Gear, Stroller Handle	1	2
3			Screw, Socket Button Head (1/4-28 x 1-1/4")	1	2
4			Screw, Allen Head (1/4-28 x 1-1/4")	1	2
5			Locknut (1/4-28)	1	2
6			Locknut (1/4-28)	1	2
7			NLA - Rivet (3/16 x 7/16")	1	2
8			Pin, Quick Release with Lanyard	1	2
9		1127767	Grip, Foam (9")	1	1
10		See Chart	#8 Crossbrace Tube	1	1
11	D	1150938	Stroller Handle Assembly - Right/Left	1	1
	C	1161431	Package, Adjusting Button, Black	10	1

NOTE: A - Includes items 2-8.
 B - To order replacement Stroller Handle Gear Adjusting Buttons, order package part number 1161431.
 C - Not Shown.
 D - Includes item #9 Foam Grip also.

#8 Crossbrace Tube

12-16" Wide	14-18" Wide	16-20" Wide	18-22" Wide
1129473	1129474	1129475	1129476