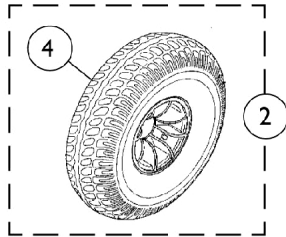
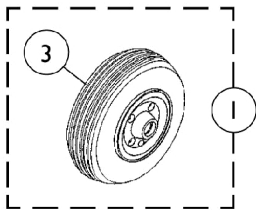
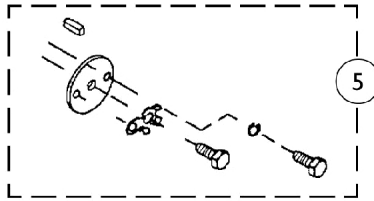
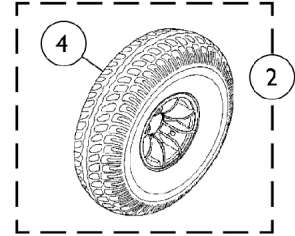
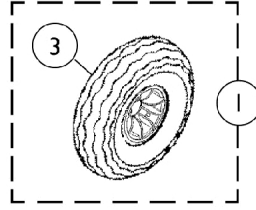


# Wheels

**Lynx SX3P/SX3  
Zoom-3**



**Lynx LX3/LX3<sup>Plus</sup>  
Panther LX4/MX4**



# Wheels

Item Number	Note	Part Number	Description	Quantity Per	
				Package	Assembly
1		See Chart	Front Wheel Assembly	1	1
2		See Chart	Rear Wheel Assembly	1	1
3	B	1088715-NLA	NLA - Tire w/ Foam Fill Insert, Front, Grey (8" x 2")	1	1
3	C	1088716-NLA	NLA - Tire w/ Foam Fill Insert, Front, Grey (8" x 2")	1	1
3	D	1088717-NLA	NLA - Tire w/ Foam Fill Insert, Front, Grey (4" x 13")	1	1
4	A	1088718-NLA	NLA - Tire w/ Foam Fill Insert, Rear, Grey (8" x 2")	1	1
4	B,C	1088720-NLA	NLA - Tire w/ Foam Fill Insert, Rear, Grey (8" x 2")	1	1
4	D	1088722-NLA	NLA - Tire w/ Foam Fill Insert, Rear, Grey (4" x 13")	1	1
5		1105922-NLA	NLA - Hardware, Wheel Attaching (Pair)	2	1

NOTE: A - Lynx SX3P/SX3 and Zoom-3  
 B - Lynx LX3/LX3 Plus  
 C - Panther LX4  
 D - Panther MX4

## #1 Front Wheel Assembly

(Includes Tire, Hub, Rims and Hardware)

Lynx SX3P Lynx SX3 Zoom-3 (2 x 8")	Lynx LX3 Lynx LX3 Plus (2-1/2 x 9")	Panther LX4 Red Rim (3 x 10")	Panther LX4 Gold Rim (4 x 13")	Panther MX4 Gold Rim (4 x 13")
1088723-NLA	1090490-NLA	1090491-NLA	1090492-NLA	1090493-NLA

## #2 Rear Wheel Assembly

(Includes Tire, Hub, Rims, Washers and Hardware)

Rim Color	Lynx SX3P Zoom-3 (3 x 8")	Lynx SX3 (3 x 8")	Lynx LX3 Lynx LX3 Plus Panther LX4 (3 x 10")	Panther MX4 w/ Non Brake Hub (4 x 13") - Right	Panther MX4 w/ Brake Hub (4 x 13") - Left
Black	1090487-NLA	N/A	N/A	N/A	N/A
Red	N/A	1090488-NLA	1100516-NLA	N/A	N/A
Gold	N/A	1090489-NLA	1100517-NLA	1090494-NLA	1090495-NLA