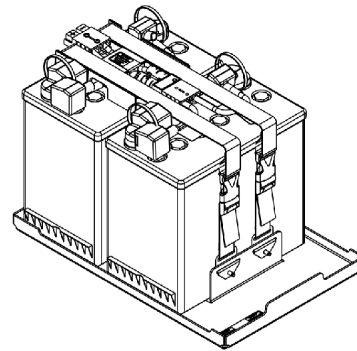
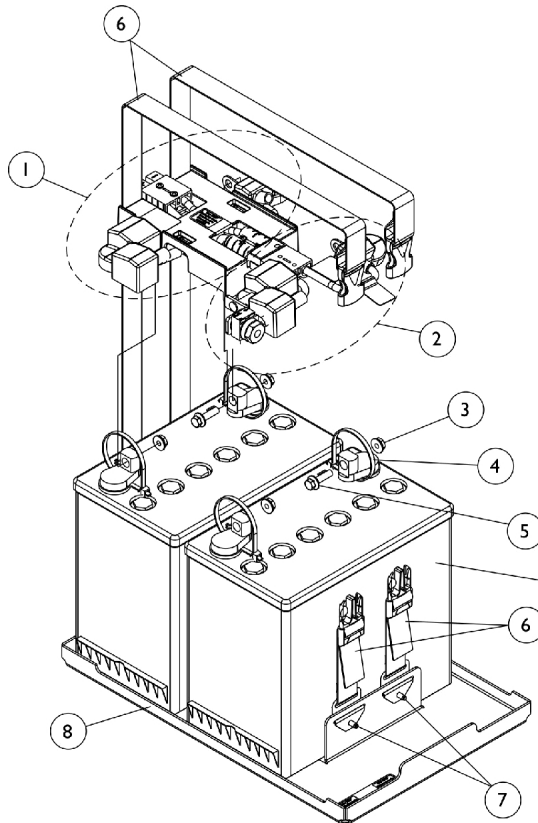


Battery Tray Assembly and Wire Harnesses

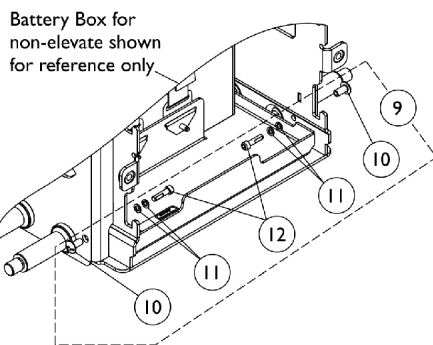
22NF Batteries



Assembled View

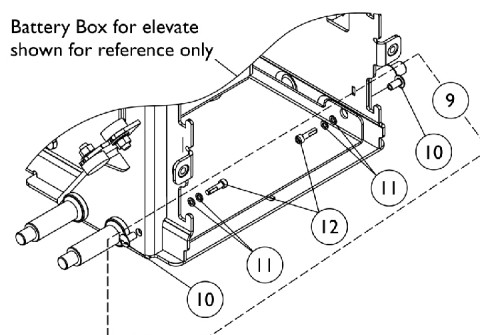


Battery shown for reference only



Battery Box for non-elevate shown for reference only

Battery Tray Stop Hardware



Battery Box for elevate shown for reference only

Battery Tray Stop Hardware

Battery Tray Assembly and Wire Harnesses 22NF Batteries

Item Number	Note	Part Number	Description	Quantity Per	
				Package	Assembly
1	A,B	1120363	Battery Wire Harness with Terminal Hardware, 22NF - Rear	1	1
2	A,B	1120362	Battery Wire Harness with Terminal Hardware, 22NF - Front	1	1
3		16721X000	Locknut (1/4-20)	1	4
4		1095502-NLA	NLA - Package, Tie Wrap (11-1/2" L)	10	1
5		1096799-NLA	NLA - Screw, Hex Flange Whiz Lock (1/4-20 x 7/8")	1	2
6		1144682	Kit, Battery Strap Assembly, 22NF	1	2
7		16348X000-NLA	NLA - Rivet (3/16 x 7/16")	1	4
8	C	1157804	Kit, Battery Tray Assembly, 22NF	1	1
9	D	1144685	Kit, Battery Tray Stop Hardware	1	1
10			NLA - Rivnut (#10-32)	1	2
11			Washer, Locking Split (#10)	1	4
12			Screw, Socket Head w/ Patch (#10-32 x 3/4")	1	2
	E	1144611	Strip, Self Adhesive Wear (2-1/2' L x 1/2" W)	1	1

NOTE: A - Individual components are not available for the battery wire harnesses
B - Includes items 3-5
C - Includes the Battery Tray and items 6-7
D - Includes items 10-12
E - Not Shown. The Self Adhesive Wear Strip is attached to the bottom side of the Battery Tray on both sides to allow removal from the Battery Box easier. One strip will accommodate both sides. Cut strip to desired length.