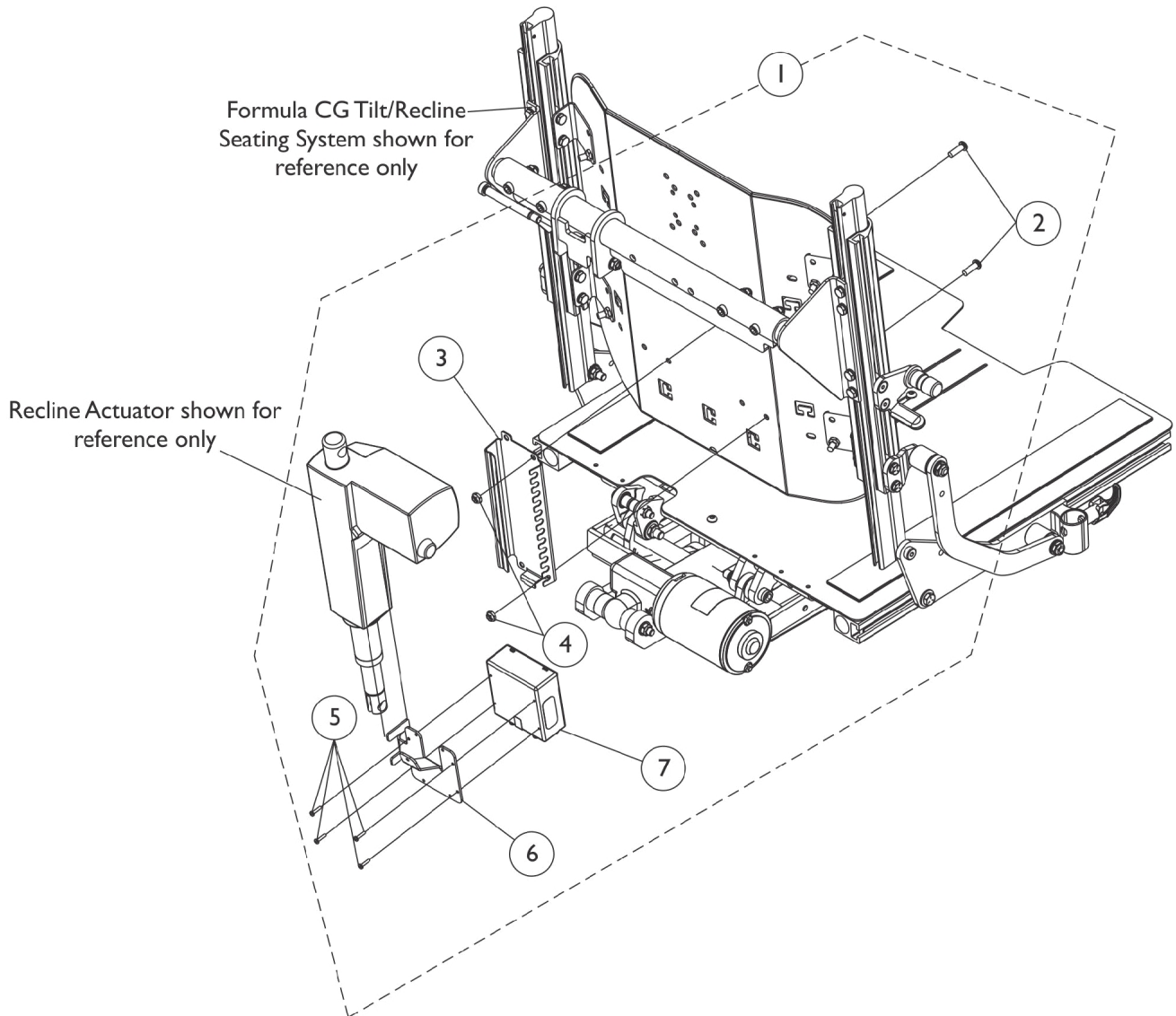


# Tilt/Recline Actuator Module (TRAM) and Mounting Hardware

Formula (CGR/CGTR) & Conv. Actuators - TDX SP/SP-GT (3G Storm After 12/9/07)



## MK6i Tilt/Recline Actuator Module (TRAM) and Mounting Hardware

**NOTE:** Mounting Hardware used for Conventional and Contoura Seating

# Tilt/Recline Actuator Module (TRAM) and Mounting Hardware

**Formula (CGR/CGTR) & Conv. Actuators - TDX SP/SP-GT (3G Storm After 12/9/07)**

Item Number	Note	Part Number	Description	Quantity Per	
				Package	Assembly
1	A	1147143	Kit, MK6i Tilt/Recline Actuator Module (TRAM) and Mtg. Hdwr. For TDX SP	1	1
2			Screw, Socket Button (1/4-20 x 3/4")	1	2
3			Bracket, MK6i Connector, Black	1	1
4			Locknut (1/4-20)	1	2
5			Screw, Phillips Pan Head (#4-40 x 1/2")	1	4
6			Bracket, MK6i Actuator Module, Black	1	1
7			Module, Tilt Recline Actuator (TRAM) - MK6i (36" L)	1	1
3		1160374	Bracket, MK6i Connector, Black	1	1
7		1140098	Module, Tilt Recline Actuator (TRAM) - MK6i (36" L)	1	1
7		1140098E-NLA	NLA - WARR RPLMT - Module, Tilt Recline Actuator (TRAM) - MK6i	1	1
	B	1101400	Harness, ELRPW Power Legrest - Right	1	1

NOTE: A - Includes items 2-7  
 B - Not Shown. ELRPW Power Legrest Harness part #1101400 is used to connect between the TRAM Module and the Tilt Actuator as well