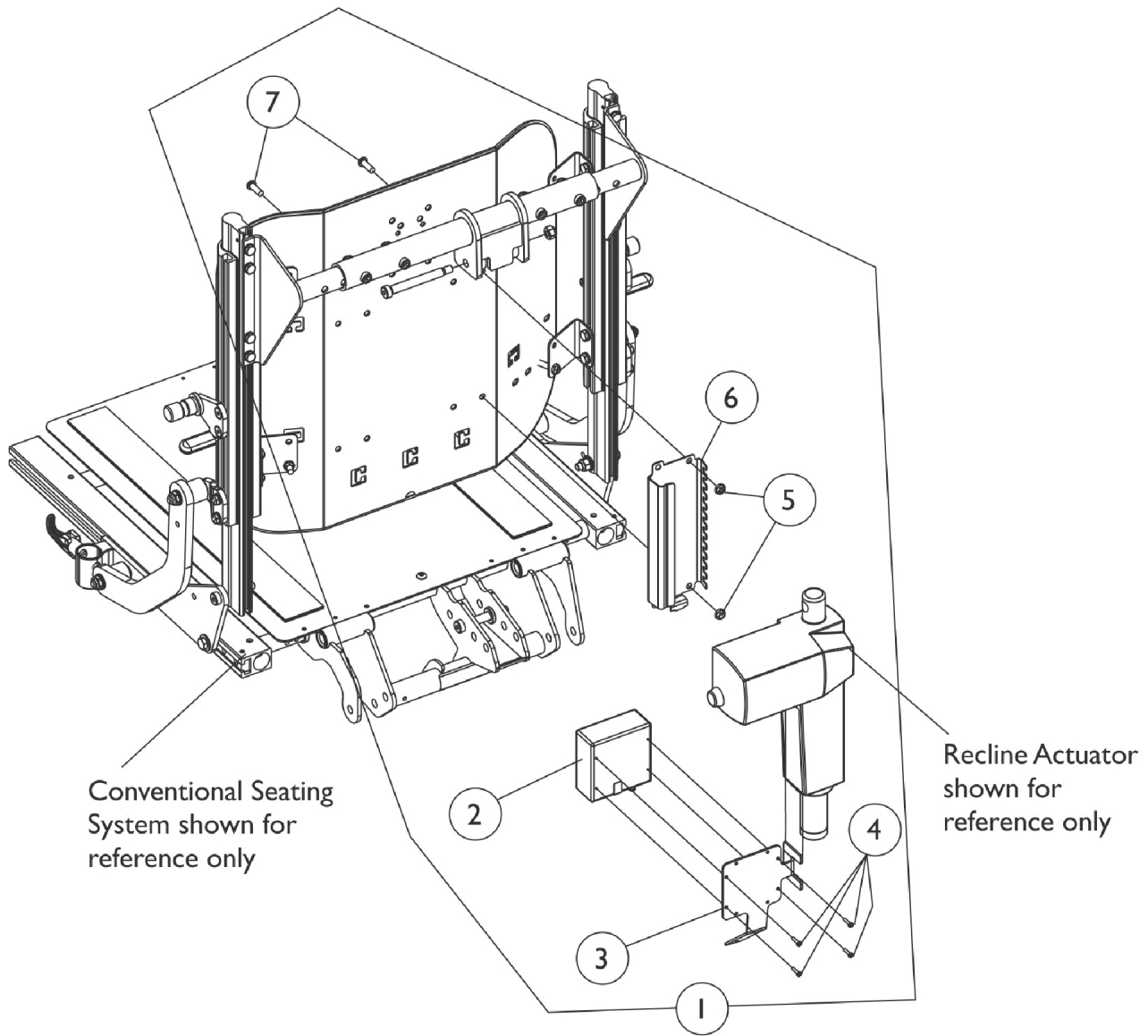


# Recline Integrated Actuator Module (RIAM) For Formula Recline and Tilt/Recline



## MK6i Recline Integrated Actuator Module (RIAM) and Mounting Hardware.

**NOTE:** Mounting Hardware used for Conventional and Contoura Seating

## Recline Integrated Actuator Module (RIAM) For Formula Recline and Tilt/Recline

| Item Number | Note | Part Number | Description  | Quantity Per |          |
|-------------|------|-------------|--|--------------|----------|
|             |      |             |  | Package      | Assembly |
| 1           | A    | 1145415-NLA | NLA - Kit, MK6i Recline Integrated Actuator Module (RIAM) w/ Mtg. Hardware | 1            | 1        |
| 2           |      |             | Module, Recline Integrated Actuator (RIAM) - MK6i (36" L)                  | 1            | 1        |
| 3           |      |             | NLA - Bracket, MK6i Recline Integrated Actuator Module, Black (RIAM)       | 1            | 1        |
| 4           |      |             | Screw, Phillips Pan Head (#4-40 x 1/2")                                    | 1            | 4        |
| 5           |      |             | Locknut (1/4-20)   | 1            | 2        |
| 6           |      |             | Bracket, MK6i Connector, Black   | 1            | 1        |
| 7           |      |             | Screw, Socket Button (1/4-20 x 3/4")                                       | 1            | 2        |
| 2           |      | 1140034     | Module, Recline Integrated Actuator (RIAM) - MK6i (36" L)                  | 1            | 1        |
| 3           |      | 1145403-NLA | NLA - Bracket, MK6i Recline Integrated Actuator Module, Black (RIAM)       | 1            | 1        |
| 4           |      | 1021742     | Screw, Phillips Pan Head (#4-40 x 1/2")                                    | 1            | 1        |
| 5           |      | 1025195     | Locknut (1/4-20)   | 1            | 2        |
| 6           |      | 1160374     | Bracket, MK6i Connector, Black   | 1            | 1        |
| 7           |      | 1009838     | Screw, Socket Button (1/4-20 x 3/4")                                       | 1            | 2        |

NOTE: A - Includes items 2-7. Kit is used for Conventional and Contoura Seating