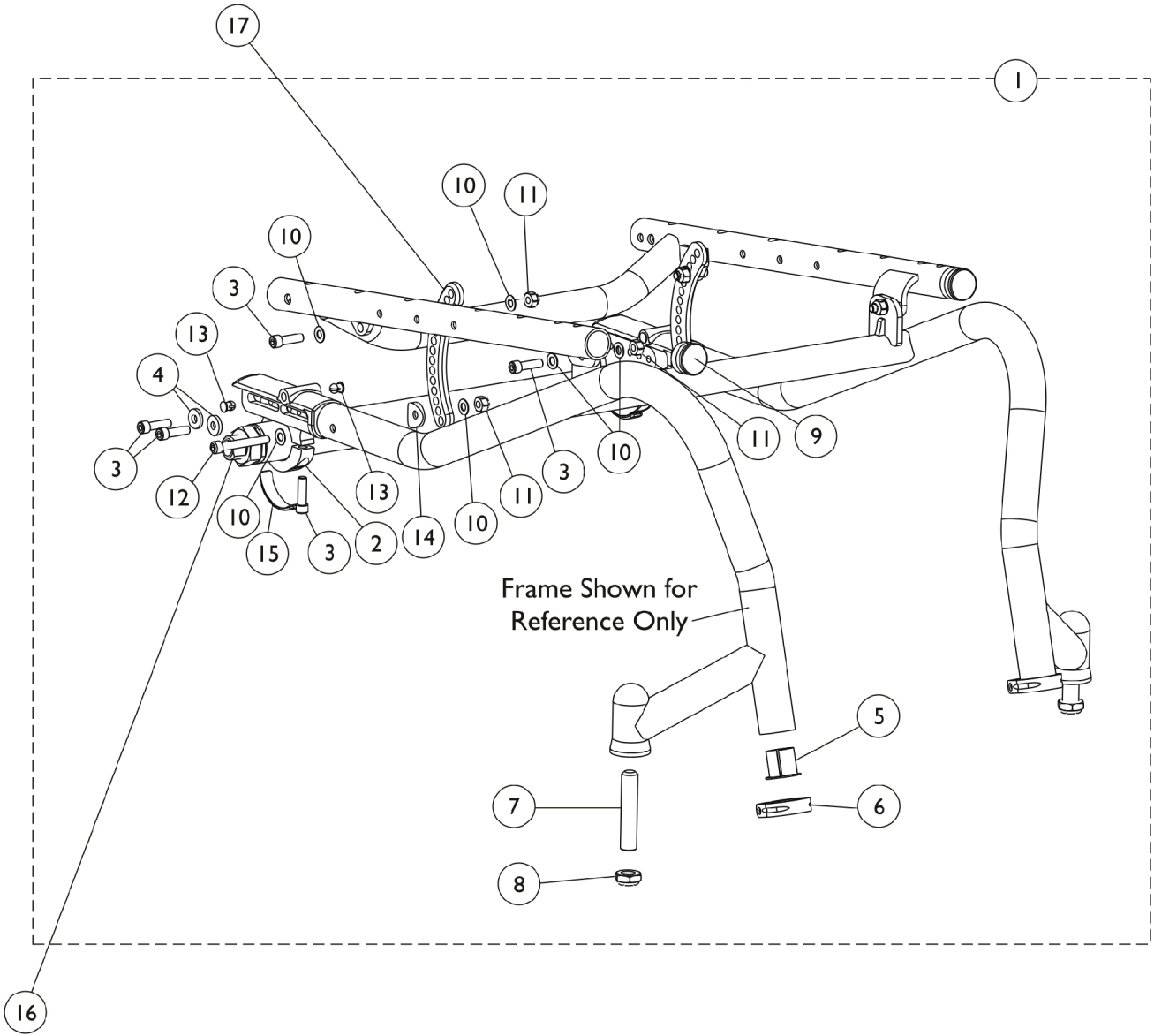


Frame Hardware - Extended



Frame Hardware - Extended

Item Number	Note	Part Number	Description	Quantity Per	
				Package	Assembly
1	A	1159771	NLA - Hardware, Frame, Extended	1	1
2			Clamp, Tube Camber	1	2
3			Screw, Socket Head (1/4-28 x 7/8")	1	10
4			Washer, Steel (1/4 x 5/8 x 3/32")	1	4
5			Spacer, Flanged, Black	1	2
6			Clamp, Tube, Footrest	1	2
7			Screw, Socket Head (1/2-20 x 2-1/2")	1	2
8			Locknut (1/2-20)	1	2
9			Plug Button, Black (1")	1	2
10			Washer (1/4 x 1/2 x 1/40)	1	12
11			Locknut (1/4-28)	1	6
12			Screw (1/4-28 x 1-7/8")	1	2
13			Button, Plug (1/4)	1	4
14			Spacer, Coved (1/4 x 13/16 x 9/16)	1	2
15			Bumper, Clamp Camber	1	2
16	B	8881143275	Camber Tube Assembly, Color, 0 Degree	1	2
16	B	8881127959-NL A	NLA - Camber Tube Assembly, Color, 3 Degree	1	2
16	B	8881143276-NL A	NLA - Camber Tube Assembly, Color, 6 Degree	1	2
16	B	8881143277	Camber Tube Assembly, Color, 9 Degree	1	2
17		See Chart	#17 Crescent Links	1	2

NOTE: A - Includes items 2-15.
B - Specify frame color when ordering, see category titled, "Frame Finishes." Quote number 090608125056 must be referenced when a new Camber Tube Assembly is ordered

#17 Crescent Links

Rear Seat to Floor Height	Black	Silver	Blue	Red
14 - 14-1/2 "	1157267-NLA	1157269-NLA	1157266-NLA	1157268-NLA
15 - 16"	1157271	1157273-NLA	1157270-NLA	1157272-NLA
16.5 - 17.5"	1157275-NLA	1157277-NLA	1157274-NLA	1157276
18 - 20"	1157279-NLA	1157281-NLA	1157278-NLA	1157280-NLA

When ordering a replacement anodized part, the customized anodized finish may appear slightly different. This subtle difference contributes to its uniqueness. If a more uniform appearance is desired, order these parts in pairs.