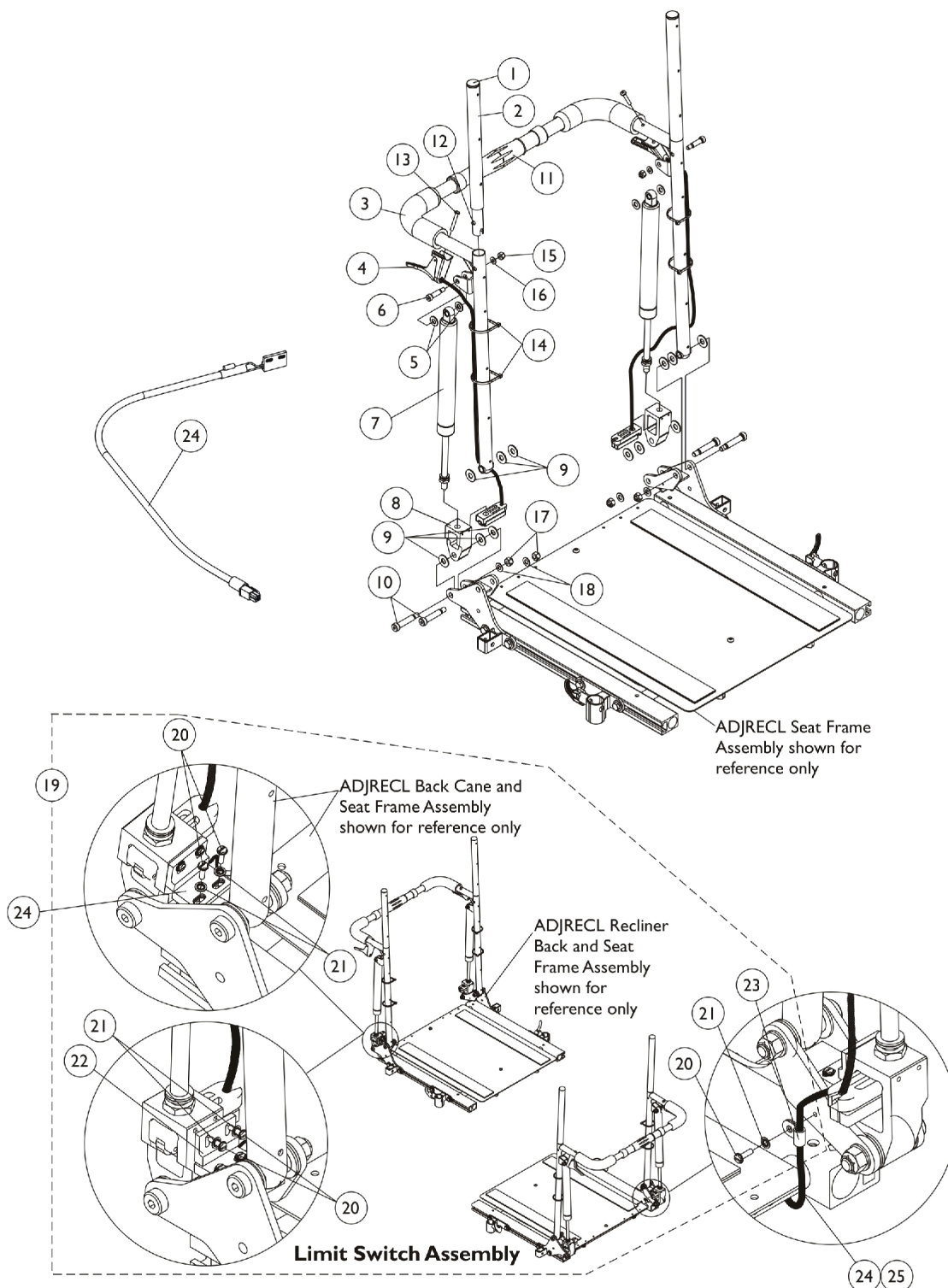


Recliner Back Assembly

ADJRECL Seat Frames



Recliner Back Assembly

ADJRECL Seat Frames

| Item Number | Note | Part Number | Description | Quantity Per | |
|--|------|-------------|---|--------------|----------|
| | | | | Package | Assembly |
| 1 | | 1027095 | Plug Button, Black (7/8") | 1 | 2 |
| 2 | | 1052997-NLA | NLA - Headrest Tube Assembly, Black - Right | 1 | 1 |
| 2 | | 1052998-NLA | NLA - Headrest Tube Assembly, Black - Left | 1 | 1 |
| 3 | | See Chart | #3 Back Cane with Grip | 1 | 1 |
| 4 | B | 1050216 | Cable with Trigger | 1 | 2 |
| 4 | C | 1050215 | Cable with Trigger | 1 | 2 |
| 4 | D | 1050214 | Cable with Trigger | 1 | 2 |
| 5 | | 1026032 | Washer, Nylon (11/32 x 11/16 x 1/16") | 1 | 4 |
| 6 | | 1050153 | Screw, Shoulder Hex Socket Head (5/16 x 7/8", 1/4-20) | 1 | 2 |
| 7 | | 1050306 | Cylinder, Lock | 1 | 2 |
| 8 | | 1050136 | Pivot, Block | 1 | 2 |
| 9 | | 1012371 | Washer, Nylon (3/8 x 7/8 x 1/16") | 1 | 12 |
| 10 | | 1031665 | Screw, Shoulder Hex Socket Head (3/8 x 1-1/2", 5/16-18) | 1 | 4 |
| 11 | F | 1050293 | Bar, Spreader, Black (14-20" W) | 1 | 1 |
| 11 | G | 1050294 | Bar, Spreader, Black (21-24" W) | 1 | 1 |
| 12 | | 1024713 | Spring, Torsion w/ Button | 1 | 2 |
| 13 | | 1091417-NLA | NLA - Screw, Phillips Pan Head (#10-24 x 1-1/4") | 1 | 2 |
| 14 | | 1095503-NLA | NLA - Package, Tie Wrap (5-5/8" L) | 10 | 1 |
| 15 | | 1025736 | Locknut (1/4-20) | 1 | 2 |
| 16 | | 1026907 | Washer (1/4 x 1/2 x 1/16") | 1 | 2 |
| 17 | | 1026158 | Locknut (5/16-18) | 1 | 4 |
| 18 | | 1025704 | Washer, Flat (5/16 x 5/8 x 1/16") | 1 | 4 |
| 19 | A | 1134498 | Kit, Limit Switch Assembly | 1 | 1 |
| 20 | | | NLA - Screw, Slotted Hex Washer Head Tap (#4-3/8") | 1 | 5 |
| 21 | | | NLA - Washer, Internal Tooth Lock (#4-40) | 1 | 5 |
| 22 | | | Sensor, Actuator Switch | 1 | 1 |
| 23 | | | NLA - Clamp, Cable | 1 | 1 |
| 24 | E | 1146573-NLA | NLA - Cable, Drive Lockout Sensor, MK6i | 1 | 1 |
| NOTE: A - Includes items 20-23. Cable sensor is not included, see item 24. B - For use with 18-20" high back canes. C - For use with 22-24" high back canes. D - For use with 26" high back canes. E - Drive Lockout Sensor Cable used for chairs manufactured with MK6i electronics only. F - 16-17" wide. G - 18-22" wide. | | | | | |

#3 Back Cane with Grip

| Back Height | 16"-17" Wide Right | 16"-17" Wide Left | 18"-22" Wide Right | 18"-22" Wide Left |
|-------------|--------------------|-------------------|--------------------|-------------------|
| 18" H | 1052079 | 1052080 | 1052089 | 1052090 |
| 20" H | 1052081 | 1052082 | 1052091 | 1052092 |
| 22" H | 1052083 | 1052084 | 1052093 | 1052094 |

Recliner Back Assembly

ADJRECL Seat Frames

#3 Back Cane with Grip

| Back Height | 16"-17" Wide Right | 16"-17" Wide Left | 18"-22" Wide Right | 18"-22" Wide Left |
|-------------|-----------------------|----------------------|-----------------------|----------------------|
| 24" H | 1052085 | 1052086 | 1052095 | 1052096 |
| 26" H | 1052087 | 1052088 | 1052097 | 1052098 |