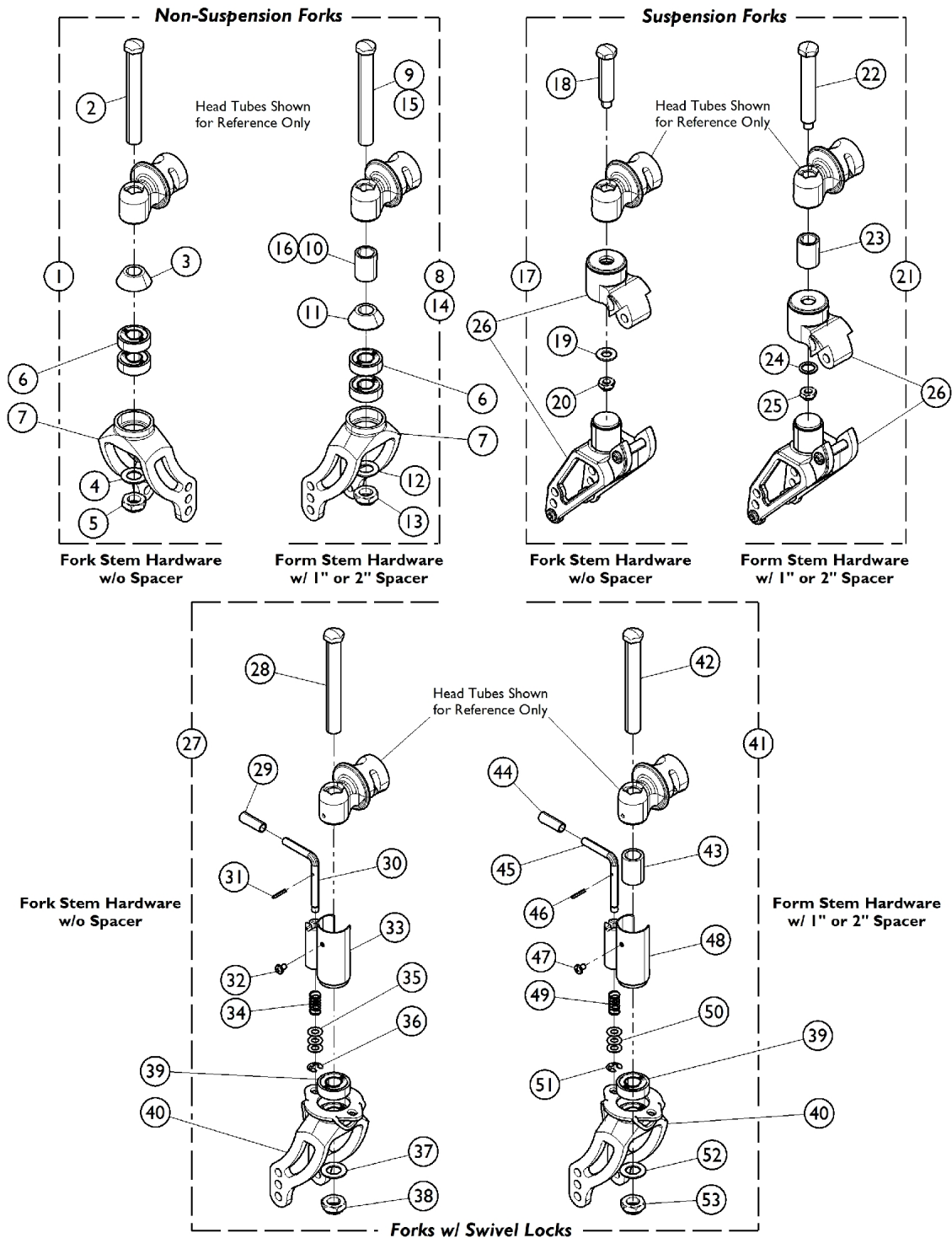


Casters - Forks w/ Hardware

NOTE: See Owner's Manual for Fork and Caster seat to floor (STF) combinations.



Casters - Forks w/ Hardware

NOTE: See Owner's Manual for Fork and Caster seat to floor (STF) combinations.

Item Number	Note	Part Number	Description	Quantity Per	
				Package	Assembly
1	A	1130502	Kit, Fork Stem Hardware, Silver Anodized	1	1
2			Screw, Hex Head (1/2-20 x 2-7/8")	1	2
3			Spacer, Fork	1	2
4			Washer (1/2 x 7/8 x 3/64")	1	2
5			Locknut (1/2-20)	1	2
1	A	1154360	Kit, Fork Stem Hardware, Black Anodized	1	1
2			Screw, Hex Head (1/2-20 x 2-7/8")	1	2
3			Spacer, Fork	1	2
4			Washer (1/2 x 7/8 x 3/64")	1	2
5			Locknut (1/2-20)	1	2
6		40117X021	Bearing (1/2" I.D. x 1-1/8" O.D.)	1	2
7	B	1128012	Fork, Non-Suspension with Bearings, Silver, Short (4-1/4" L)	1	2
7	B	1154358	Fork, Non-Suspension with Bearings, Black, Short (4-1/4" L)	1	--
7	B	1128024	Fork, Non-Suspension with Bearings, Silver, Long (6-1/4" L)	1	2
7	B	1154359	Fork, Non-Suspension with Bearings, Black, Long (6-1/4" L)	1	1
8	C	1130503	Kit, Fork Stem Hardware with 1" Spacer, Silver Anodized	1	1
9			Screw, Hex Head (1/2-20 x 3-7/8")	1	2
10			Spacer (1/2 x 3/4 x 1")	1	2
11			Spacer, Fork	1	2
12			Washer (1/2 x 7/8 x 3/64")	1	2
13			Locknut (1/2-20)	1	2
8	C	1154361	Kit, Fork Stem Hardware with 1" Spacer, Black Anodized	1	1
9			Screw, Hex Head (1/2-20 x 3-7/8")	1	2
10			Spacer, Black Anodized (17/32 x 3/4 x 1")	1	2
11			Spacer, Fork	1	2
12			Washer (1/2 x 7/8 x 3/64")	1	2
13			Locknut (1/2-20)	1	2
14	D	1130504	Kit, Fork Hardware with 2" Spacer, Silver Anodized	1	1
11			Spacer, Fork	1	2
12			Washer (1/2 x 7/8 x 3/64")	1	2
13			Locknut (1/2-20)	1	2
15			Screw, Hex Head (1/2-20 x 4-7/8")	1	2
16			Spacer (1/2 x 3/4 x 2")	1	2
14	D	1154362	Kit, Fork Hardware with 2" Spacer, Black Anodized	1	1
15			Screw, Hex Head (1/2-20 x 4-7/8")	1	2
11			Spacer, Fork	1	2
12			Washer (1/2 x 7/8 x 3/64")	1	2
13			Locknut (1/2-20)	1	2
16			Spacer (17/32 x 3/4 x 2")	1	2
17	E,J	1130585	Kit, Suspension Fork Stem Hardware, Silver Anodized	1	1

Casters - Forks w/ Hardware

NOTE: See Owner's Manual for Fork and Caster seat to floor (STF) combinations.

Item Number	Note	Part Number	Description	Quantity Per	
				Package	Assembly
18			Screw (5/16-24 x 2-5/32")	1	2
19			Washer, Steel (15/32 x 5/8 x 3/64")	1	2
20			Locknut (5/16-24)	1	2
21	F,J	1130586	Kit, Suspension Fork Stem Hardware with 1" Spacer, Silver Anodized	1	1
22			Screw (5/16-24 x 3-5/32")	1	2
23			Spacer (1/2 x 3/4 x 1")	1	2
24			Washer, Steel (15/32 x 5/8 x 3/64")	1	2
25			Locknut (5/16-24)	1	2
21	F,J	1154371	Kit, Suspension Fork Stem Hardware with 1" Spacer, Black Anodized	1	1
22			Screw (5/16-24 x 3-5/32")	1	2
23			Spacer, Black Anodized (17/32 x 3/4 x 1")	1	2
24			Washer, Steel (15/32 x 5/8 x 3/64")	1	2
25			Locknut (5/16-24)	1	2
26	J	1130572	Suspension Fork Assembly, Soft Setting	1	2
26	J	1130573	Suspension Fork Assembly, Firm Setting	1	2
27	G,I	1139468	Kit, Fork Stem Hardware for Caster Lock	1	1
28			Screw, Hex Head (1/2-20 x 2-7/8")	1	2
29			Cap, Handle, Black	1	2
30			Handle, Lock Caster	1	2
31			Pin, Roll (3/32" x 5/8")	1	2
32			NLA - Screw, Phillips Pan Head (#8-32 x 1/4")	1	2
33			Sleeve, Lock Caster - Right	1	1
33			Sleeve, Lock Caster - Left	1	1
34			Spring, Compression (3/8 x 7/8 x 1/64")	1	2
35			Washer (1/4 x 1/2 x 1/32")	1	6
36			NLA - Ring, Retaining	1	2
37			Washer (1/2 x 7/8 x 3/64")	1	2
38			Locknut (1/2-20)	1	2
			NLA - Instruction Sheet, Caster Swivel Lock	1	1
39		40117X021	Bearing (1/2" I.D. x 1-1/8" O.D.)	1	2
40		1140400	Fork, Caster Swivel Lock with Bearings, Silver, Short	1	2
40		1140401	Fork, Caster Swivel Lock with Bearings, Silver, Long	1	2
40		1154364	Fork, Caster Swivel Lock with Bearings, Black, Short	1	2
40		1154369-NLA	NLA - Fork, Caster Swivel Lock with Bearings, Black, Long	1	2
41	H,I	1139469	Kit, Fork Stem Hardware for Caster Lock w/ 1" Spacer	1	1
42			Screw, Hex Head (1/2-20 x 3-7/8")	1	2
43			Spacer (1/2 x 3/4 x 1")	1	2
44			Cap, Handle, Black	1	2
45			Handle, Lock Caster	1	2
46			Pin, Roll (3/32" x 5/8")	1	2
47			NLA - Screw, Phillips Pan Head (#8-32 x 1/4")	1	2

Casters - Forks w/ Hardware

NOTE: See Owner's Manual for Fork and Caster seat to floor (STF) combinations.

Item Number	Note	Part Number	Description	Quantity Per	
				Package	Assembly
48			Sleeve, Lock Caster for 1" Spacer - Right	1	1
48			Sleeve, Lock Caster for 1" Spacer - Left	1	1
49			Spring, Compression (3/8 x 7/8 x 1/64")	1	2
50			Washer (1/4 x 1/2 x 1/32")	1	6
51			NLA - Ring, Retaining	1	2
52			Washer (1/2 x 7/8 x 3/64")	1	2
53			Locknut (1/2-20)	1	2
			NLA - Instruction Sheet, Caster Swivel Lock	1	1
41	H,I	1139470	Kit, Fork Stem Hardware for Caster Lock w/ 2" Spacer	1	1
42			Screw, Hex Head (1/2-20 x 4-7/8")	1	2
43			Spacer (1/2 x 3/4 x 2")	1	2
44			Cap, Handle, Black	1	2
45			Handle, Lock Caster	1	2
46			Pin, Roll (3/32" x 5/8")	1	2
47			NLA - Screw, Phillips Pan Head (#8-32 x 1/4")	1	2
48			Sleeve, Caster Lock for 2" Spacer - Right	1	1
48			Sleeve, Caster Lock for 2" Spacer - Left	1	1
49			Spring, Compression (3/8 x 7/8 x 1/64")	1	2
50			Washer (1/4 x 1/2 x 1/32")	1	6
51			NLA - Ring, Retaining	1	2
52			Washer (1/2 x 7/8 x 3/64")	1	2
53			Locknut (1/2-20)	1	2
			NLA - Instruction Sheet, Caster Swivel Lock	1	1
41	H,I	1154367	Kit, Fork Stem Hardware for Caster Lock w/1" Spacer	1	1
42			Screw, Hex Head (1/2-20 x 3-7/8")	1	2
43			Spacer, Black Anodized (17/32 x 3/4 x 1")	1	2
44			Cap, Handle, Black	1	2
45			Handle, Lock Caster	1	2
46			Pin, Roll (3/32" x 5/8")	1	2
47			NLA - Screw, Phillips Pan Head (#8-32 x 1/4")	1	2
48			Sleeve, Lock Caster for 1" Spacer - Right	1	1
48			Sleeve, Lock Caster for 1" Spacer - Left	1	1
49			Spring, Compression (3/8 x 7/8 x 1/64")	1	2
50			Washer (1/4 x 1/2 x 1/32")	1	6
51			NLA - Ring, Retaining	1	2
52			Washer (1/2 x 7/8 x 3/64")	1	2
53			Locknut (1/2-20)	1	2
			NLA - Instruction Sheet, Caster Swivel Lock	1	1
41	H,I	1154368	Kit, Fork Stem Hardware for Caster Lock w/2" Spacer	1	1
42			Screw, Hex Head (1/2-20 x 4-7/8")	1	2
43			Spacer (17/32 x 3/4 x 2")	1	2
44			Cap, Handle, Black	1	2
45			Handle, Lock Caster	1	2
46			Pin, Roll (3/32" x 5/8")	1	2

Casters - Forks w/ Hardware

NOTE: See Owner's Manual for Fork and Caster seat to floor (STF) combinations.

Item Number	Note	Part Number	Description	Quantity Per	
				Package	Assembly
47			NLA - Screw, Phillips Pan Head (#8-32 x 1/4")	1	2
48			Sleeve, Caster Lock for 2" Spacer - Right	1	1
48			Sleeve, Caster Lock for 2" Spacer - Left	1	1
49			Spring, Compression (3/8 x 7/8 x 1/64")	1	2
50			Washer (1/4 x 1/2 x 1/32")	1	6
51			NLA - Ring, Retaining	1	2
52			Washer (1/2 x 7/8 x 3/64")	1	2
53			Locknut (1/2-20)	1	2
			NLA - Instruction Sheet, Caster Swivel Lock	1	1
<p>NOTE: A - Includes items 2 - 5. B - Includes item 6 (Bearings). C - Includes items 9 - 13. D - Includes items 11 - 13, 15 - 16. E - Includes items 18 - 20. F - Includes items 22 - 25. G - Includes items 28 - 38. H - Includes items 42 - 53. I - Item is no longer available from the Invacare Service Parts Department. Refer to the Invacare Website under "Product Literature Search". Enter the part number in the "Keywords" field and download a free PDF version copy. J - Used for SOFR-F option (Frog Legs Front Suspension Forks).</p>					