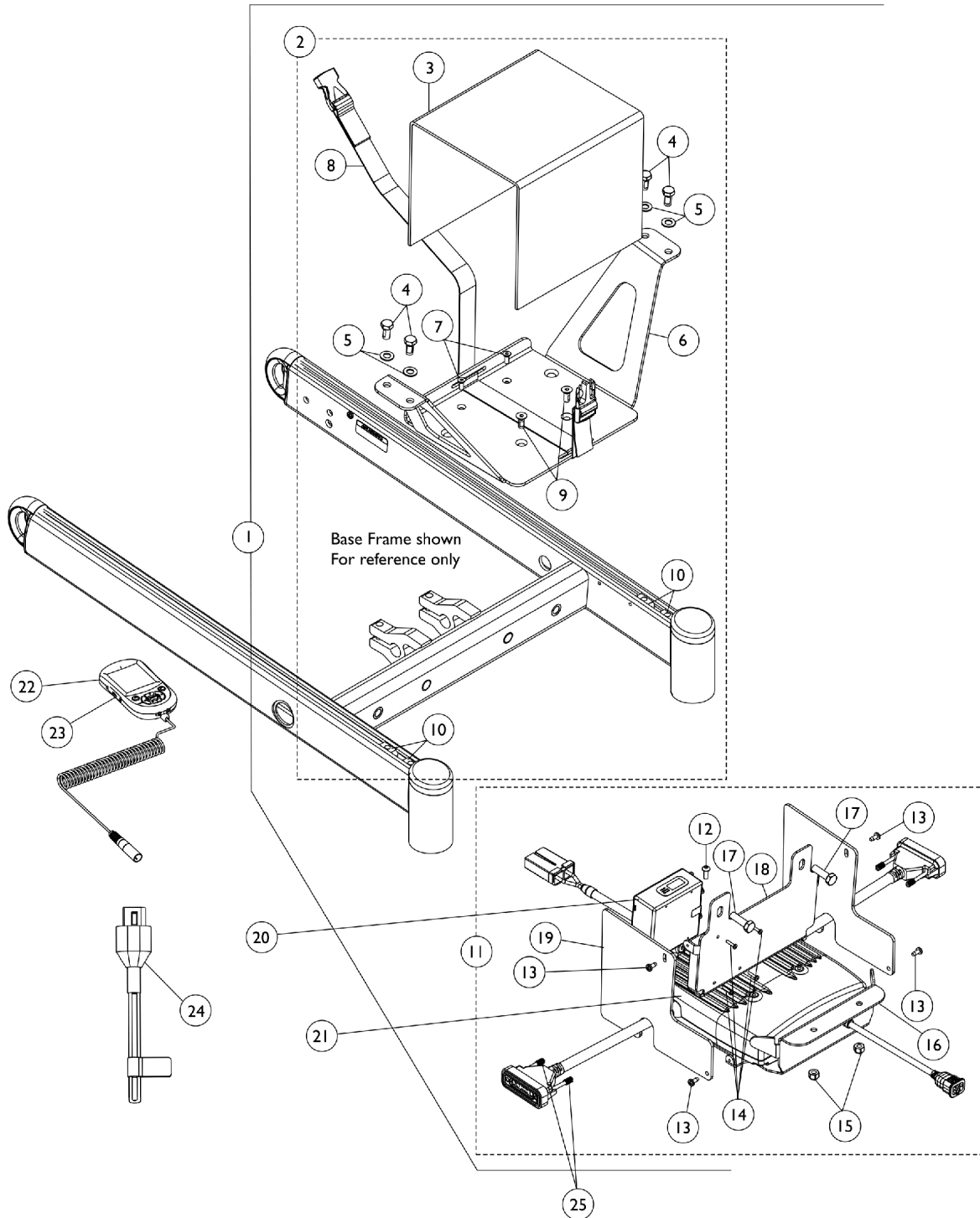


# Controller - Programmer - Shrouds - MK6i TRAM w/ Mtg. Hdwr.

## 3G Storm w/GB TT Motors and Formula CG w/ Vent

NOTE: After 12/9/07 the TRAM Module was relocated next to the Recline Actuator Conventional Motor for Tilt/Recline & Recline Only systems. Tilt Only Systems with Conventional Tilt Actuator Motors use a GTAM module in place of the TRAM module also.



# Controller - Programmer - Shrouds - MK6i TRAM w/ Mtg. Hdwr.

## 3G Storm w/GB TT Motors and Formula CG w/ Vent

**NOTE: After 12/9/07 the TRAM Module was relocated next to the Recline Actuator Conventional Motor for Tilt/Recline & Recline Only systems. Tilt Only Systems with Conventional Tilt Actuator Motors use a GTAM module in place of the TRAM module also.**

| Item Number | Note | Part Number | Description   | Quantity Per |          |
|-------------|------|-------------|---|--------------|----------|
|             |      |             |   | Package      | Assembly |
| 1           | A    | 1146625-NLA | NLA - Kit, Vent Battery Tray MK6i GB TT RWD Controller Mounting Hardware                        | 1            | 1        |
| 3           |      |             | Shroud, Vent Battery  | 1            | 1        |
| 4           |      |             | Screw, Hex Head w/ Patch (5/16-18 x 5/8")   | 1            | 4        |
| 5           |      |             | Washer, Flat (5/16 x 5/8 x 1/16")   | 1            | 4        |
| 6           |      |             | Tray, Vent Battery  | 1            | 1        |
| 7           |      |             | NLA - Screw, Socket Flat Head (#10-32 x 1/2")   | 1            | 2        |
| 8           |      |             | NLA - Battery Strap Assembly  | 1            | 1        |
| 9           |      |             | Screw, Socket Flat Head w/ Patch (1/4-20 x 5/8")  | 1            | 2        |
| 10          |      |             | T-Nut (5/16-18)   | 1            | 4        |
| 12          |      |             | NLA - Screw, Socket Button Head (#10-32 x 1/2")   | 1            | 1        |
| 13          |      |             | Screw, Phillips Pan Head Tap (#8-32 x 3/8")   | 1            | 4        |
| 14          |      |             | Screw, Phillips Pan Head (#4-40 x 1/2")   | 1            | 4        |
| 15          |      |             | Locknut (1/4-20)  | 1            | 2        |
| 16          |      |             | Bracket, MK6i GB TT RWD Controller Mounting, Black (for Vent Option)                            | 1            | 1        |
| 17          |      |             | Screw, Hex Head w/ Patch (5/16-18 x 1")   | 1            | 2        |
| 18          |      |             | Bracket, MK6i GB TT RWD TRAM Mounting, Black (for Vent Option)                                  | 1            | 1        |
| 19          |      |             | Shroud, MK6i GB TT RWD Controller/TRAM, Black (Vent Options)                                    | 1            | 2        |
| 2           | B    | 1148657-NLA | NLA - Kit, Vent Battery Tray w/ Hardware - MK6i GB TT RWD                                       | 1            | 1        |
| 3           |      |             | Shroud, Vent Battery  | 1            | 1        |
| 4           |      |             | Screw, Hex Head w/ Patch (5/16-18 x 5/8")   | 1            | 4        |
| 5           |      |             | Washer, Flat (5/16 x 5/8 x 1/16")   | 1            | 4        |
| 6           |      |             | Tray, Vent Battery  | 1            | 1        |
| 7           |      |             | NLA - Screw, Socket Flat Head (#10-32 x 1/2")   | 1            | 2        |
| 8           |      |             | NLA - Battery Strap Assembly  | 1            | 1        |
| 9           |      |             | Screw, Socket Flat Head w/ Patch (1/4-20 x 5/8")  | 1            | 2        |
| 10          |      |             | T-Nut (5/16-18)   | 1            | 4        |
| 11          | C    | 1148658-NLA | NLA - Kit, MK6i GB TT RWD Controller/TRAM Mounting Bracket, Shroud Covers and Mounting Hardware | 1            | 1        |
| 12          |      |             | NLA - Screw, Socket Button Head (#10-32 x 1/2")   | 1            | 1        |
| 13          |      |             | Screw, Phillips Pan Head Tap (#8-32 x 3/8")   | 1            | 4        |
| 14          |      |             | Screw, Phillips Pan Head (#4-40 x 1/2")   | 1            | 4        |
| 15          |      |             | Locknut (1/4-20)  | 1            | 2        |
| 16          |      |             | Bracket, MK6i GB TT RWD Controller Mounting, Black (for Vent Option)                            | 1            | 1        |
| 17          |      |             | Screw, Hex Head w/ Patch (5/16-18 x 1")   | 1            | 2        |
| 18          |      |             | Bracket, MK6i GB TT RWD TRAM Mounting, Black (for Vent Option)                                  | 1            | 1        |

# Controller - Programmer - Shrouds - MK6i TRAM w/ Mtg. Hdwr.

## 3G Storm w/GB TT Motors and Formula CG w/ Vent

**NOTE: After 12/9/07 the TRAM Module was relocated next to the Recline Actuator Conventional Motor for Tilt/Recline & Recline Only systems. Tilt Only Systems with Conventional Tilt Actuator Motors use a GTAM module in place of the TRAM module also.**

| Item Number | Note   | Part Number  | Description  | Quantity Per |          |
|-------------|--------|--------------|--|--------------|----------|
|             |        |              |  | Package      | Assembly |
| 19          |        |              | Shroud, MK6i GB TT RWD Controller/TRAM, Black (Vent Options)               | 1            | 2        |
| 20          |        | 1140098      | Module, Tilt Recline Actuator (TRAM) - MK6i (36" L)                        | 1            | 1        |
| 20          |        | 1140098E-NLA | NLA - WARR RPLMT - Module, Tilt Recline Actuator (TRAM) - MK6i             | 1            | 1        |
| 21          | D      | 1134213      | Controller w/ Gasket Connectors, MK6i GB TT RWD                            | 1            | 1        |
| 22          | I      | 1139985      | Programmer, MK6i Remote  | 1            | 1        |
| 22          | I      | 1142215      | Kit, MK6i Remote Programmer w/ SD Professional Card & Card Holder (1813M6) | 1            | 1        |
| 23          |        | 1139997      | Cover, SD Card Slot  | 1            | 1        |
| 24          | H,H1   | 1142223-NLA  | NLA - Plug Assembly, Max Angle Shorting                                    | 1            | 1        |
| 25          |        | 1159217      | Package, Thumb Screw (1-1/2" L)  | 10           | 1        |
|             | E,E1,F | 1134214      | Kit, GB HD Controller Gasket Connector                                     | 1            | 1        |
|             | G      | 1101400      | Harness, ELRPW Power Legrest - Right                                       | 1            | 1        |

**NOTE:** A - Includes items 3-10 and 12-19  
 B - Includes items 3-10  
 C - Includes items 12-19  
 D - Controller will include Gasket Connectors created 10/26/07 that will be attached to the motor cables. Part number on controller will reference 1140040, always order 1134213 as a service parts replacement  
 E - Kit was created 10/26/07 and attaches to the controller motor cables. Includes 2 ea. GB HD Controller Gasket Connectors, 2 ea. Silicon Lubricant Packets, 1 ea. Instruction Sheet. Individual components are non-saleable.  
 E1 - The kit can retrofit to existing GB HD controllers in the field  
 F - Not Shown  
 G - Not Shown. ELRPW Power Legrest Harness part #1101400 is used to connect between the TRAM Module and a Conventional Tilt Actuator as well  
 H - Max Angle Shorting Plug Assembly plugs into the Max Angle Connector on the TRAM module to close the circuit. Only the Tilt Sensor Connector is used. This applies to a Conventional Tilt Actuator only.  
 H1 - Max Angle Shorting Plug is not used with the GTAM that replaced the TRAM for (CGT) with GB motors.  
 I - The MK6i Programmer Manual (1141471) is not included and is strongly recommended the guide be ordered or downloaded from Literature Fulfillment.