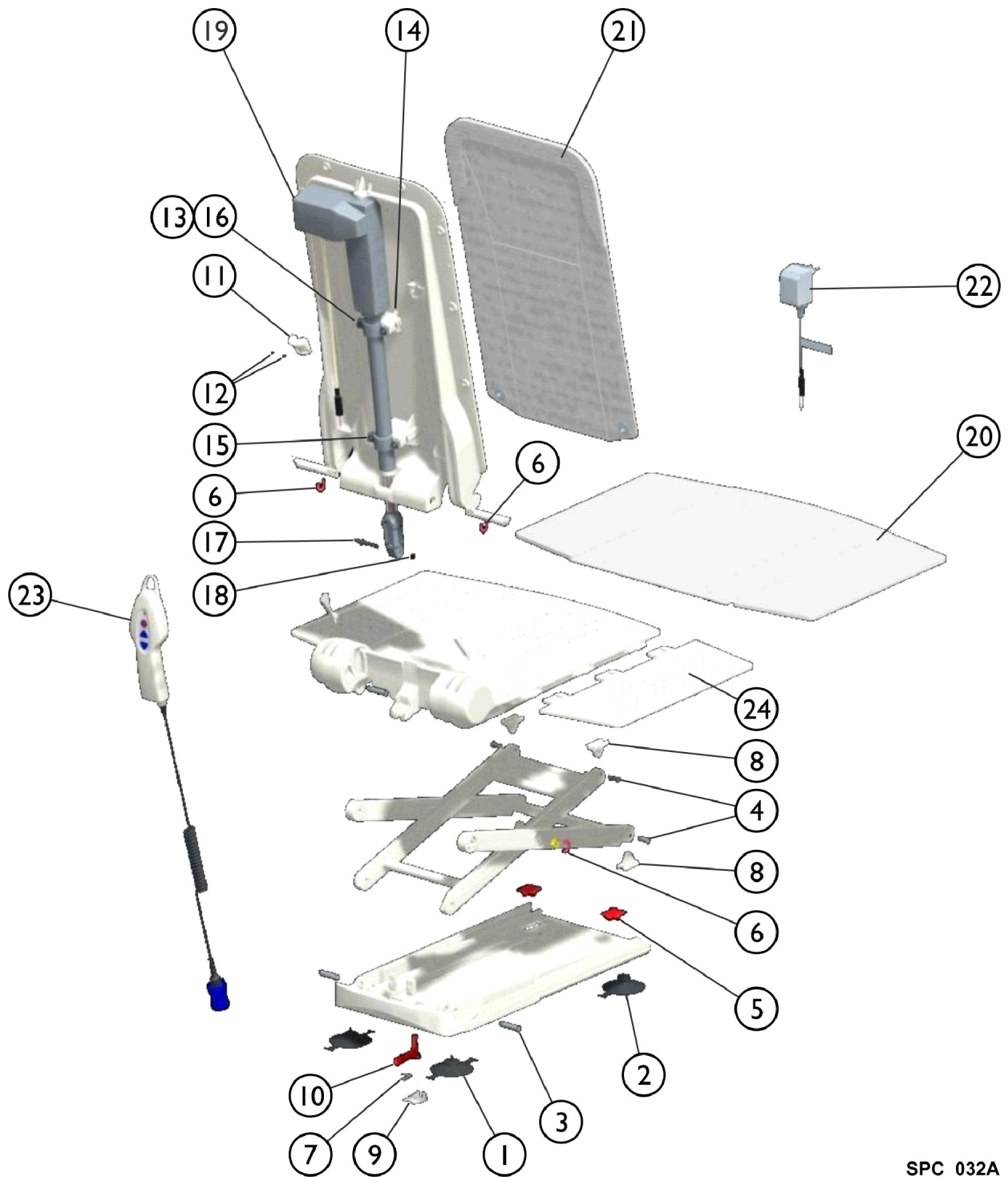


Aquatec F - Fixed Back Bath Lift



SPC_032A

Aquatec F - Fixed Back Bath Lift

| Item Number | Note | Part Number | Description | Quantity Per | |
|-------------|------|-------------|---|--------------|----------|
| | | | | Package | Assembly |
| 1+2 | | 15353 | Cups, Suction, Screw-In and Toggle (Set) (8 cm) | 4 | 1 |
| 3 | | 16679 | Bolt (10mm) | 1 | 4 |
| 4 | | 15105 | Bolt for Gliding Shoe | 1 | 4 |
| 5 | | 15121 | Cap for Suction Cup | 1 | 2 |
| 6 | | 15344 | Washer, Securing | 1 | 2 |
| 7 | | 15415 | Spring | 1 | 1 |
| 8 | | 16446 | Shoe, Gliding | 1 | 4 |
| 9 | | 16448 | Latch, Bushing | 1 | 1 |
| 10 | | 16649 | Latch | 1 | 1 |
| 11 | | 16455 | Holding Device (Excluding Screws) | 1 | 1 |
| 12 | | 15348 | Screws, Phone Jack (40 x 22) | 1 | 2 |
| 13 | | 16781 | Lens Head Screw DIN 7985, M5 x 30 | 1 | 4 |
| 14 | | 16779 | Nut for Actuator Fastening | 1 | 4 |
| 15 | | 16778 | Clamp, Pipe, Actuator Fastening | 1 | 2 |
| 16 | | 16780 | Washer A2 DIN 9021 | 1 | 4 |
| 17 | | 16793 | Axle | 1 | 1 |
| 18 | | 16456 | Ring, Retaining, A2 | 1 | 2 |
| 19 | | 1471060 | Actuator, Aquatec F | 1 | 1 |
| 20 | | 16606 | Cover, Seat, White | 1 | 1 |
| 21 | | 16604 | Cover, Backrest, White | 1 | 1 |
| 22 | | 16580 | Charger, Battery | 1 | 1 |
| 23 | | 1470902 | Hand Control, Complete | 1 | 1 |
| 24 | | 15892 | Flap, Side with Film Hinge | 1 | 2 |
| | | 1470576 | Cover Set, Seat and Backrest, White | 1 | 1 |
| | | 1563010 | Frame, Backrest, Orca (Lifts built after May 2015) | 1 | 1 |
| | | 1580158 | Backrest and Seat Plate (Lifts built Before May 2015) | 1 | 1 |