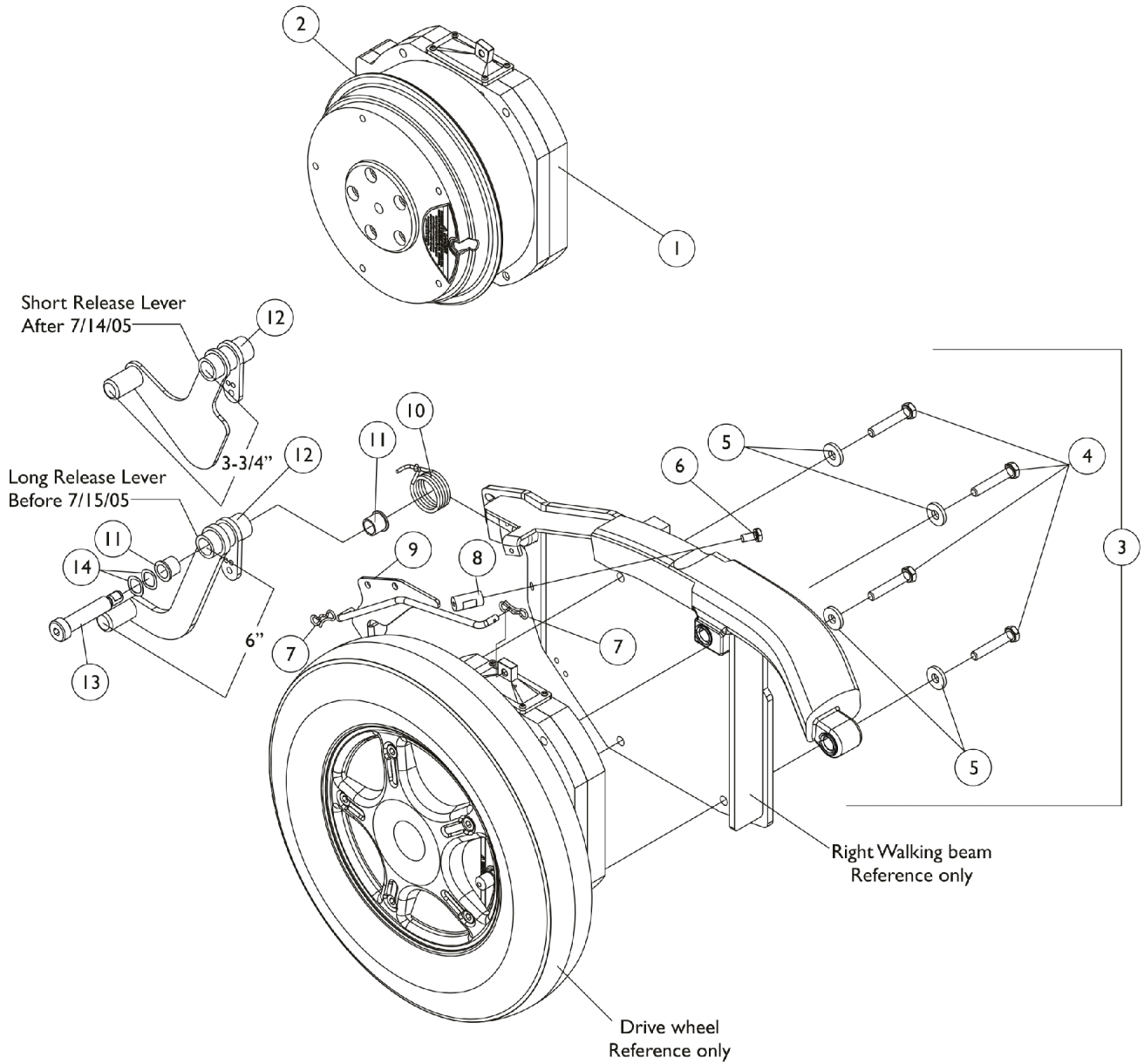


# Motor, GB HD (TrueTrack) and Mounting Hardware

GB motors are optional on TDX 3 and TDX 4. Standard on TDX 5 models.  
GB motors are used for both 300 and 400 Lb. weight limits



# Motor, GB HD (TrueTrack) and Mounting Hardware

GB motors are optional on TDX 3 and TDX 4. Standard on TDX 5 models.

GB motors are used for both 300 and 400 Lb. weight limits

Item Number	Note	Part Number	Description	Quantity Per	
				Package	Assembly
1	H,H1,I, K	1152665-NLA	NLA - Kit, Motor, TDX GB TT HD - Right	1	1
1	H,H1,I, K	1152665E	Reconditioned - Kit, Motor, TDX GB TT HD - Right	1	1
1	H,H1,I, K	1152666-NLA	NLA - Kit, Motor, TDX GB TT HD - Left	1	1
1	H,H1,I, K	1152666E	Reconditioned - Kit, Motor, TDX GB TT HD - Left	1	1
1	I,L	1123234E-NLA	NLA - WARR RPLMT - Motor, 3rd Gen. Storm GB HD = Left / TDX = Right and Installation Instruction Sheet	1	1
1	I,L	1123235E-NLA	NLA - WARR RPLMT - Motor, 3rd Gen. Storm GB HD = Right / TDX = Left and Installation Instruction Sheet	1	1
2	F	1133188-NLA	NLA - Gasket, Motor Connector	1	1
	B	1122137	Instruction Sheet, GB HD Motor Installation For TDX	1	1
	B,G	1144925	Kit, Stand-Off Screw with Lockwasher	1	2
	B,J,J1	1134214	Kit, GB HD Controller Gasket Connector	1	1
3	A,C,D	1120353-NLA	NLA - Kit, GB Motor Mounting Hardware - Right	1	1
4			NLA - Screw, Hex Head w/ Patch (M8 x 1.25 x 45mm)	1	4
5			Washer, Flat (21/64 x 53/64 x 7/64")	1	4
6			Screw, Hex Head w/ Patch (1/4-20 x 1/2")	1	1
7			NLA - Cotter, Locking Bow-Tie (1/4" Shaft)	1	2
8			NLA - Stand-Off	1	1
9			Rod, Linkage - Right	1	1
10			Spring, GB Brake Release - Right	1	1
11			Bushing (1/2 x 5/8")	1	2
12			NLA - Lever, Long Release, Black - Right	1	1
13			NLA - Screw, Shoulder Hex Socket Head (1/2 x 2", 3/8-16)	1	1
14			Washer, Wave (17/32 x 3/4 x 1/64")	1	2
3	A,C,D	1120354-NLA	NLA - Kit, GB Motor Mounting Hardware - Left	1	1
4			NLA - Screw, Hex Head w/ Patch (M8 x 1.25 x 45mm)	1	4
5			Washer, Flat (21/64 x 53/64 x 7/64")	1	4
6			Screw, Hex Head w/ Patch (1/4-20 x 1/2")	1	1
7			NLA - Cotter, Locking Bow-Tie (1/4" Shaft)	1	2
8			NLA - Stand-Off	1	1
9			Rod, Linkage - Left	1	1
10			Spring, GB Brake Release - Left	1	1
11			Bushing (1/2 x 5/8")	1	2
12			NLA - Lever, Long Release, Black - Left	1	1
13			NLA - Screw, Shoulder Hex Socket Head (1/2 x 2", 3/8-16)	1	1
14			Washer, Wave (17/32 x 3/4 x 1/64")	1	2

## Motor, GB HD (TrueTrack) and Mounting Hardware

GB motors are optional on TDX 3 and TDX 4. Standard on TDX 5 models.

GB motors are used for both 300 and 400 Lb. weight limits

Item Number	Note	Part Number	Description	Quantity Per			
				Package	Assembly		
3	A,C,E, M	1137085-NLA	NLA - Kit, GB Motor Mounting Hardware - Right	1	1		
4			NLA - Screw, Hex Head w/ Patch (M8 x 1.25 x 45mm)	1	4		
5			Washer, Flat (21/64 x 53/64 x 7/64")	1	4		
6			Screw, Hex Head w/ Patch (1/4-20 x 1/2")	1	1		
7			NLA - Cotter, Locking Bow-Tie (1/4" Shaft)	1	2		
8			NLA - Stand-Off	1	1		
9			Rod, Linkage - Right	1	1		
10			Spring, GB Brake Release - Right	1	1		
11			Bushing (1/2 x 5/8")	1	2		
12			NLA - Lever, Short Release - Right	1	1		
13			NLA - Screw, Shoulder Hex Socket Head (1/2 x 2", 3/8-16)	1	1		
14			Washer, Wave (17/32 x 3/4 x 1/64")	1	2		
3			A,C,E, M	1137086-NLA	NLA - Kit, GB Motor Mounting Hardware - Left	1	1
4					NLA - Screw, Hex Head w/ Patch (M8 x 1.25 x 45mm)	1	4
5	Washer, Flat (21/64 x 53/64 x 7/64")	1			4		
6	Screw, Hex Head w/ Patch (1/4-20 x 1/2")	1			1		
7	NLA - Cotter, Locking Bow-Tie (1/4" Shaft)	1			2		
8	NLA - Stand-Off	1			1		
9	Rod, Linkage - Left	1			1		
10	Spring, GB Brake Release - Left	1			1		
11	Bushing (1/2 x 5/8")	1			2		
12	NLA - Lever, Short Release - Left	1			1		
13	NLA - Screw, Shoulder Hex Socket Head (1/2 x 2", 3/8-16)	1			1		
14	Washer, Wave (17/32 x 3/4 x 1/64")	1			2		
12	D	1113196-NLA			NLA - Lever, Long Release, Black - Right	1	1
12	D	1113197-NLA			NLA - Lever, Long Release, Black - Left	1	1
12	E	1133886-NLA	NLA - Lever, Short Release - Right	1	1		
12	E	1133887-NLA	NLA - Lever, Short Release - Left	1	1		

# Motor, GB HD (TrueTrack) and Mounting Hardware

**GB motors are optional on TDX 3 and TDX 4. Standard on TDX 5 models.**  
**GB motors are used for both 300 and 400 Lb. weight limits**

- NOTE:
- A - Includes items 4-14
  - B - Not Shown.
  - C - A reinforcement plate was added to the linkage rod 1/31/05 and the reinforcement plate was revised 9/19/07. It is recommended to order new motor mounting hardware in pairs for chairs manufactured before 9/19/07.
  - D - Before 7/15/05. GB Motor Mounting Hardware used a Long Release Lever.
  - E - After 7/14/05. GB Motor Mounting Hardware used a Short Release Lever.
  - F - Connector Gasket added to all GB HD Motors 5/16/06 and comes standard when a new motor is ordered. Gasket can be attached to all GB HD Motors in the field before 5/16/06 as well
  - G - Stand-Off Screw with Lockwasher kit used to secure the controller cable on the GB motors
  - H - Kit includes the GB Motor, item #9 Linkage Rod, item #10 Brake Release Spring, item #14 Wave Washers and GB HD Motor Installation Instruction Sheet. The GB HD Motor Brake Lever was revised 9/18/07 and
  - H1 - required a change to the Linkage Rod and Release Spring to create a low effort brake mechanism to prevent permanent damage to the motor brake lever. Kits are backward compatible to all GB HD Motors in the field. For chair SN's 071XXXXXX and After
  - I - The GB HD motor will include a Controller Gasket Connector Kit created 10/26/07 that attaches to the controller motor cables. The kit can retrofit to existing GB HD controllers in the field.
  - J - Kit was created 10/26/07 and attaches to the controller motor cables. Includes 2 ea. GB HD Controller Gasket Connectors, 2 ea. Silicon Lubricant Packets, 1 ea. Instruction Sheet. Individual components are non-saleable.
  - J1 - The kit can retrofit to existing GB HD controllers in the field
  - K - When ordering TDX GB HD Motor Kits for chairs manufactured before 7/15/05, Short Release Lever 1133886 (Right) or 1133887 (Left) must be ordered as well.
  - L - Warranty Replacement Part #'s 1123234E and 1123235E do not require additional hardware to retrofit chairs in the field. For chair SN's 07HXXXXXX and before.
  - M - Item 12 release lever contour was revised on 5/05/08 and is backward compatible to all chairs in the field. It is not required to order a right and left side release lever together.